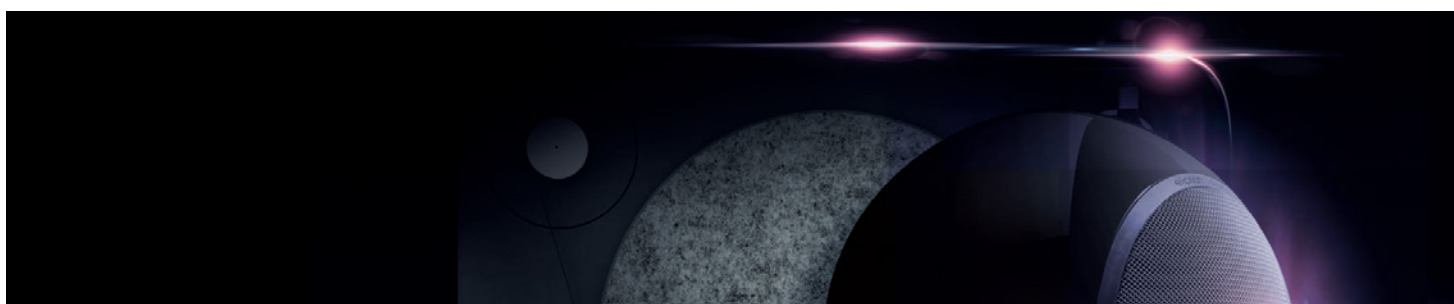


elipson®

## TABELA DE PREÇOS



**e<sup>®</sup>** SISTEMAS  
VISUAL COMMUNICATION SOLUTIONS  
MULTIMEDIA PRODUCTS

[www.esistemas.pt](http://www.esistemas.pt) | [geral@esistemas.pt](mailto:geral@esistemas.pt)

### Planet L



REF.	MODELO	ACABAMENTO	EAN (Unid)	EAN (Par)	€ PVPR	€ PVPR C/IVA	
ELIPS-PLANETLB	<b>Planet L Black</b>	Piano Black	3760108805088	-	<b>283,74</b>	<b>349,00</b>	Unid.
ELIPS-PLANETLW	<b>Planet L White</b>	Piano White	3760108805101	-	<b>283,74</b>	<b>349,00</b>	Unid.
ELIPS-PLANETLR	<b>Planet L Red</b>	Piano Red	3760108805064	-	<b>283,74</b>	<b>349,00</b>	Unid.
ELIPS-PLANETLBM	<b>Planet L Black Mat</b>	Mat Black	3760108805323	-	<b>283,74</b>	<b>349,00</b>	Unid.
ELIPS-PLANETLB2	<b>Planet L Black 2.0</b>	Piano Black	-	3760108805095	<b>567,48</b>	<b>698,00</b>	Par
ELIPS-PLANETLW2	<b>Planet L White 2.0</b>	Piano White	-	3760108805118	<b>567,48</b>	<b>698,00</b>	Par
ELIPS-PLANETLR2	<b>Planet L Red 2.0</b>	Piano Red	-	3760108805071	<b>567,48</b>	<b>698,00</b>	Par
ELIPS-PLANETLBM2	<b>Planet L Black Mat 2.0</b>	Mat Black	-	3760108805330	<b>567,48</b>	<b>698,00</b>	Par
ELIPS-WALLMOUNT	<b>Wall Mount</b>	Brushed Aluminium	3760108805903	-	<b>60,98</b>	<b>75,00</b>	Unid.
ELIPS-CEILINGMOUNT	<b>Ceiling Mount</b>	Brushed Aluminium	3760108805309	-	<b>80,49</b>	<b>99,00</b>	Unid.
ELIPS-PLANETCSTAND	<b>MC / Planet L Stand</b>	Brushed Stell	3760108805361	-	<b>80,49</b>	<b>99,00</b>	Unid.

### Planet M



REF.	MODELO	ACABAMENTO	EAN (Unid)	EAN (Par)	€ PVPR	€ PVPR C/IVA	
ELIPS-PLANETMB	<b>Planet M Black</b>	Piano Black	3760108805736	-	<b>186,18</b>	<b>229,00</b>	Unid.
ELIPS-PLANETMW	<b>Planet M White</b>	Piano White	3760108805705	-	<b>186,18</b>	<b>229,00</b>	Unid.
ELIPS-PLANETMR	<b>Planet M Red</b>	Piano Red	3760108805675	-	<b>186,18</b>	<b>229,00</b>	Unid.
ELIPS-PLANETMB2	<b>Planet M Black 2.0</b>	Piano Black	-	3760108805743	<b>365,04</b>	<b>449,00</b>	Par
ELIPS-PLANETMW2	<b>Planet M White 2.0</b>	Piano White	-	3760108805712	<b>365,04</b>	<b>449,00</b>	Par
ELIPS-PLANETMR2	<b>Planet M Red 2.0</b>	Piano Red	-	3760108805712	<b>365,04</b>	<b>449,00</b>	Par
NEW ELIPS-PLANETMG2	<b>Planet M Gold 2.0</b>	Mat Gold	-	-	<b>365,04</b>	<b>449,00</b>	Par
NEW ELIPS-PLANETMS2	<b>Planet M Sentou 2.0</b>	Piano White/Red	-	-	<b>405,69</b>	<b>499,00</b>	Par
NEW ELIPS-PLANETMAD2	<b>Planet M AS Tribute 2.0</b>	Piano White	-	-	<b>405,69</b>	<b>499,00</b>	Par
ELIPS-PLANETMB5	<b>Planet M Black 5.0</b>	Piano Black	3760108805750	-	<b>893,50</b>	<b>1099,00</b>	Pack5
ELIPS-PLANETMW5	<b>Planet M White 5.0</b>	Piano White	3760108805729	-	<b>893,50</b>	<b>1099,00</b>	Pack5
ELIPS-PLANETMR5	<b>Planet M Red 5.0</b>	Piano Red	3760108805699	-	<b>893,50</b>	<b>1099,00</b>	Pack5

Planet M Stand



Wall Mount



Ceiling Mount



In-Ceiling Mount



REF.	MODELO	ACABAMENTO	EAN (Unid)	EAN (Par)	€ PVPR	€ PVPR C/IVA	
ELIPS-PLANETMSTAND	<b>Planet M Stand</b>	Brushed Stell	3760108805897	-	<b>60,98</b>	<b>75,00</b>	Unid.
ELIPS-PLANETMWALLM	<b>Planet M Wall Mount</b>	Brushed Aluminium	3760108805774	-	<b>39,84</b>	<b>49,00</b>	Unid.
ELIPS-PLANETMCEILIN	<b>Planet M Ceiling Mount</b>	Brushed Aluminium	3760108805798	-	<b>64,23</b>	<b>79,00</b>	Unid.
ELIPS-PLANETMINC	<b>Planet M In-Ceiling Mount</b>	White	3760108805781	-	<b>64,23</b>	<b>79,00</b>	Unid.

## Planet LW



Planet LW



Bridge

REF.	MODELO	ACABAMENTO	EAN (Unid)	EAN (Par)	€ PVPR	€ PVPR C/IVA	
ELIPS-PLANETLWR	<b>Planet LW Red 2.0 + Bridge</b>	Piano Red	-	3760108805804	<b>1373,98</b>	<b>1690,00</b>	Par

## Planet Sub



Planet Sub

REF.	MODELO	ACABAMENTO	EAN (Unid)	EAN (Par)	€ PVPR	€ PVPR C/IVA	
ELIPS-PLANETSUBW	<b>Planet Sub White</b>	Piano White	3760108805866	-	<b>365,85</b>	<b>450,00</b>	Unid.
ELIPS-PLANETSUBB	<b>Planet Sub Black</b>	Piano Black	3760108805873	-	<b>365,85</b>	<b>450,00</b>	Unid.
ELIPS-PLANETSUBR	<b>Planet Sub Red</b>	Piano Red	3760108805859	-	<b>365,85</b>	<b>450,00</b>	Unid.

## BS50 Tribute



BS50 Tribute

REF.	MODELO	ACABAMENTO	EAN (Unid)	EAN (Par)	€ PVPR	€ PVPR C/IVA	
ELIPS-BS50TRIBUTE	<b>BS50 Tribute</b>	Satin White	-	3760108805835	<b>3243,90</b>	<b>3990,00</b>	Par

### Lenny / Timber Bluetooth®



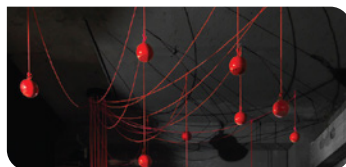
Lenny



Timber

REF.	MODELO	ACABAMENTO	EAN (Unid)	EAN (Par)	€ PVPR	€ PVPR C/IVA	
ELIPS-LENNY	<b>Lenny</b>	Satin White	3760221800885	-	<b>243,09</b>	<b>299,00</b>	Unid.
 ELIPS-LENNYB	<b>Lenny Black</b>	Black	3760221801240	-	<b>243,09</b>	<b>299,00</b>	Unid.
 ELIPS-TIMBER	<b>Timber Grey</b>	Grey	3760221801226	-	<b>161,79</b>	<b>199,00</b>	Unid.

### Sound Tree



Sound Tree Active SubWoofer 200W

Nota: Inclui 1 Amplificador MC Center personalizado + 1 USB Dongle + 1 iPad/iPhone Dongle


REF.	MODELO	ACABAMENTO	EAN (Unid)	EAN (Par)	€ PVPR	€ PVPR C/IVA	
ELIPS-SOUNDTREE	<b>Sound Tree Red</b>	Piano red	3760108805590	-	<b>13.821,14</b>	<b>17.000,00</b>	Pack

### Music Center



Music Center



REF.	MODELO	EAN (Unid)	EAN (Par)	€ PVPR	€ PVPR C/IVA	
 ELIPS-MUSICCENTERB	<b>Elipson Music Center Bluetooth</b>	3760221801103	-	<b>812,20</b>	<b>999,00</b>	Unid.
ELIPS-IPODDONGLE	<b>Elipson iPhone/iPod/iPad Dongle</b>	3760108805354	-	<b>80,49</b>	<b>99,00</b>	Unid.
ELIPS-USBDONGLE	<b>Elipson USB Dongle</b>	3760108805347	-	<b>80,49</b>	<b>99,00</b>	Unid.

### Pack Music System Bluetooth



Pack Music System

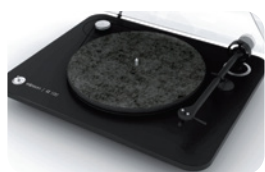
Nota: Inclui 1 Music Center Bluetooth + 1 USB Dongle + 1 Par Colunas Planet L.

REF.	MODELO	EAN (Unid)	EAN (Par)	€ PVPR	€ PVPR C/IVA	
ELIPS-PACKMUSICSB	<b>Elipson Music Center Bluetooth USB Dongle Planet L 2.0</b>	-	-	<b>1218,70</b>	<b>1499,00</b>	Pack

### Turntable

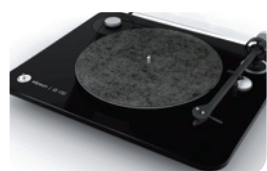


NEW  
Alpha 50



NEW  
Alpha 100

REF.	MODELO/CARACTERISTICAS	€ PVPR	€ PVPR C/IVA	
ELIPS-ALPHA50	<b>Alpha 50</b> - Chassis PVC, Finish Black matt (12mm), injected plastic tray, Cartridge type ES50, acrylic cover	<b>243,09</b>	<b>299,00</b>	Unid.
ELIPS-ALPHA100	<b>Alpha 100</b> - Chassis PVC, Finish Black matt (12mm), injected plastic tray, Cartridge type ES100 (OM10 ortofon), acrylic cover, with cables	<b>283,74</b>	<b>349,00</b>	Unid.
ELIPS-ALPHA100R	<b>Alpha 100 RIAA</b> - Chassis PVC, Finish Black matt (12mm), injected plastic tray, Cartridge type ES100 (OM10 ortofon), acrylic cover, with cables, Module Pre Amp RIAA	<b>381,30</b>	<b>469,00</b>	Unid.
ELIPS-ALPHA100RBT	<b>Alpha 100 RIAA BT</b> - Chassis PVC, Finish Black matt (12mm), injected plastic tray, Cartridge type ES100 (OM10 ortofon), acrylic cover, with cables, Module Pre Amp RIAA Bluetooth	<b>405,69</b>	<b>499,00</b>	Unid.



NEW  
Omega 100

ELIPS-OMEGA100	<b>Omega 100</b> - Chassis PMMA, Finish Acrylic lacquer (Red, White, Black), glass tray, Cartridge type ES100 (OM10 ortofon), acrylic cover, with cables	<b>381,30</b>	<b>469,00</b>	Unid.
ELIPS-OMEGA100R	<b>Omega 100 RIAA</b> - Chassis PMMA, Finish Acrylic lacquer (Red, White, Black), glass tray, Cartridge type ES100 (OM10 ortofon), acrylic cover, with cables, Module Pre Amp RIAA	<b>438,21</b>	<b>539,00</b>	Unid.
ELIPS-OMEGA100RBT	<b>Omega 100 RIAA BT</b> - Chassis PMMA, Finish Acrylic lacquer (Red, White, Black), glass tray, Cartridge type ES100 (OM10 ortofon), acrylic cover, with cables, Module Pre Amp RIAA Bluetooth	<b>486,99</b>	<b>599,00</b>	Unid.

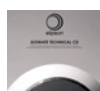
### Acessórios

ELIPS-BELTKIT	<b>2 Moon Belt Kit - Red</b>	<b>12,20</b>	<b>15,00</b>	Unid.
ELIPS-FELTKIT	<b>Moon Felt - Grey, Black, White and Red</b>	<b>12,20</b>	<b>15,00</b>	Unid.

### Cable / Test Disc



Cable150



Technical CD



Technical Record

REF.	MODELO	EAN (Unid)	EAN (Par)	€ PVPR	€ PVPR C/IVA	
ELIPS-CABLE150	<b>Elipson Cable 150</b>	3760108805125	-	<b>39,84</b>	<b>49,00</b>	Rolo 10m
ELIPS-ULTTECHCD	<b>Ultimate Technical CD</b>	3760108805262	-	<b>15,45</b>	<b>19,00</b>	Unid.
ELIPS-ULTTECHREC	<b>Ultimate Technical Record</b>	3760108805286	-	<b>23,58</b>	<b>29,00</b>	Unid.

ULTIMA ATUALIZAÇÃO | SETEMBRO 2015

CONDIÇÕES GERAIS DE FORNECIMENTO

Esta tabela substitui e revoga as anteriores.  
Os preços poderão ser sujeitos a alterações sem aviso prévio.  
Preços sujeitos a iva e taxas legais em vigor.



**SEDE PORTO**

Rua Companhia dos Caolinos N°40  
4460-205 Senhora da Hora  
MATOSINHOS - PORTUGAL  
Tel. +351 229 558 456  
Fax. +351 229 558 457

**DELEGAÇÃO LISBOA**

Bela Vista Office, Sala 2-20  
Estrada de Paço de Arcos 66  
2735-336 CACÉM – PORTUGAL  
Tel. +351 212 405 070  
Fax. +351 210 920 609