

E24c

24 Device Economy Charging Solution
for Tablets, Laptops and Chromebooks



Efficient, Effortless, Economical

Looking for a simple charging cart that can store and charge classroom devices without breaking the bank? Say hello to E24c, AVer's latest budget-friendly charging solution perfect for your everyday, effortless device management.



AC Charger



10 Years
Mechanical



5 Years
Electricity

“ AVer has great products for education... the AVer cart features, availability and price-point met our needs... the external frame is well built and great for transporting the carts across campus.”

*- San Marino Unified School District, Carver Elementary School,
Jason Power, Computer Lab Coordinator*



Maneuver with Finesse

E24c's compact design and 5" swivel casters make it easier to transport devices and provide a smooth mobile experience even in the most crowded corridors or smallest spaces.



Clear-cut Power and Cable Management

Devices are easily cabled and fully charged free of any program setup or circuit overload! Simply connect E24c to an outlet and it will automatically circulate charges through each row of devices.



Easy on the Pocketbook

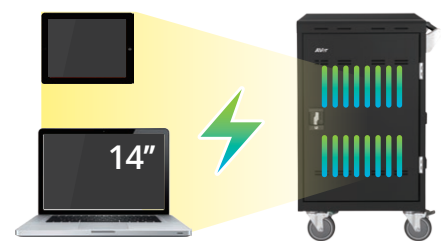
Quality device management does not have to equate to big spending. E24c provides all your charging needs at a fraction of the cost.

SAVE MONEY



One Cart Fits All

E24c easily supports 24 laptops, Chromebooks, or tablet devices with screens up to 14". Need to charge your own laptop while charging your students' tablets? Sure, why not.



Sleek and Classy

Internally spacious enough to store 24 devices yet sleekly designed externally to fit in the most confined spaces. Ideal for any tight areas!



Product specifications

Device capacity

- 24

Slot size

- H = 30.1 cm (11.84")
- W = 3.2 cm (1.26")
- D = 36.7 cm (14.43")

Support device

- Laptop / Chromebook / tablets up to 14"

Sync type

- N/A

Charging type

- Smart Cycle Charging

External power outlets

- N/A

LED indicator

- N/A

Sliding shelves

- N/A

Divider type

- Metal bar

Warranty

- 10-year: mechanical components
- 5-year: electrical components

Shipping information

- 20' for 21 pcs
- 40' for 48 pcs
- 40' H for 96 pcs
- 1-in-1 pallet

Cart dimensions

- H = 103.9 cm (40.91")
- W = 64.0 cm (25.18")
- D = 63.2 cm (24.88")

Package dimensions

- H = 122.0 cm (48.03")
- W = 74.5 cm (29.33")
- D = 74.4 cm (29.29")

Net weight

- 50 kg (100.23 lbs)

Gross weight

- 71 kg (156.53 lbs)

Power specification

- AC in: 220-240V~50/60Hz, 8A
- PWR strip: 24-port total, 220-240V~50/60Hz, 8A

Cable management

- Individual AC adapter compartments and secure cable channel by cable clip

Security

- Front and rear doors: 2-point mechanism with keys

Casters

- 5" casters (4 x 360 degree, 2 x lockable in rear, 2 x directional in front)

Specifications may vary depending on countries and are subject to change without notice

Product appearance

Front

Rear

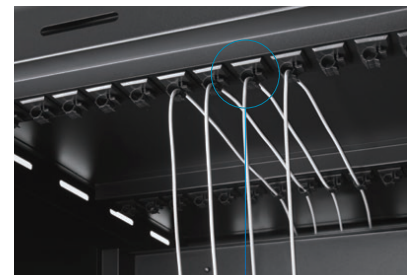
Cable management



Lockable door



Lockable door



Cable clip



©2018 AVer Information Inc. All rights reserved.
All brand names and logos are trademarks of their respective companies.