



CEILING PLATES

Common Installations



concrete
CMA330 & CMA345



vaulted
CMA395

CMS115 SpeedConnect™ Ceiling Plate with 1-1/2" NPT opening

- Low-profile, aesthetic design
- Integrated cable port for a clean installation
- Weight Capacity: 500 lbs (227 kg)
- Available in black, silver and white



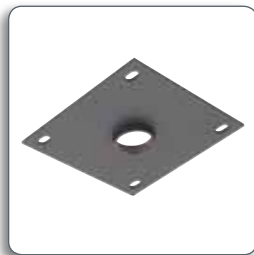
CMA101 Designer Ceiling Plate

- Attractive solution for basic installations
- Two or four bolt installation
- Weight Capacity: 500 lbs (227 kg)
- Available in black, silver and white



CMA110 8" (203 mm) Flat Ceiling Plate

- General purpose ceiling plate with large mounting footprint
- Use with long columns to distribute load
- Weight Capacity: 500 lbs (227 kg)



CMA115 6" (152 mm) Flat Ceiling Plate

- General purpose ceiling plate with medium mounting footprint
- Weight Capacity: 500 lbs (227 kg)
- Available in black, silver and white



CMA330 8" (203 mm) Offset Ceiling Plate

- Offset provides cable exit when mounting to flat ceiling surfaces
- Offset Height: 1.75" (45 mm)
- Weight Capacity: 500 lbs (227 kg)



CMA345 Structured Ceiling Plate

- Flexible joint to minimize shock and vibration
- Offset provides cable exit when mounting to flat ceiling surfaces
- Weight Capacity: 500 lbs (227 kg)



CMS390 Dual Joist Ceiling Plate

- Attaches to finished ceilings and provides lateral shift between joists
- Joist Width: 16" (406 mm)
- Weight Capacity: 500 lbs (227 kg)



CMS391 Dual Joist Ceiling Plate

- Attaches to finished ceilings and provides lateral shift between joists
- Joist Width: 24" (610 mm)
- Weight Capacity: 500 lbs (227 kg)



CMA395 Angled Ceiling Plate

- Adjustable for installation on angled ceilings
- Weight Capacity: 500 lbs (227 kg)
- Available in black and white





CEILING ADAPTERS

Common Installations



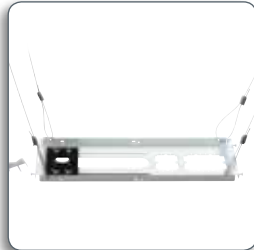
suspended
CMS440 & CMA470



suspended
CMS445

CMS440 Above-Tile Suspended Ceiling Kit

- Flexible solution provides infinite column placement within 2' x 2' (600 x 600 mm) or 2 x 4' (600 x 1200 mm) ceiling tile
- WireVice™ cable suspension system for quick and easy tie-off (includes four 25' [7.62 m] cables)
- TwisTile™ ceiling tile cutter easily pierces circular hole for extension column
- Weight Capacity: 50 lbs (22.7 kg)



CMS445 SpeedConnect Suspended Ceiling Tile Replacement Kit

- Heavy-duty solution supports center column placement within a 2' x 2' (600 x 600 mm) ceiling tile
- Includes (4) 25' flexible cables, (4) wood eyebolts, (4) concrete anchors and a chrome trim ring
- Weight Capacity: 50 lbs (22.7 kg)



CMA470 Above-Tile Storage Accessory

- Provides storage for equipment above the suspended ceiling
- Hinged door for easy access
- Compatible with CMS440, CMA440, CMA450 and CMA455 ceiling kits



CMSZ006 0-6" Fully Threaded Column

- Provides infinite height adjustment from suspended ceiling kits
- Compatible with all Chief suspended ceiling kits
- Available in black and silver



STRUCTURAL ADAPTERS

Common Installations



truss
CMA365 & CMA366



unistrut
CMA372 & CMA110

CMA360 I-Beam Clamp

- Clamps to I-beams and transitions to vertical extension column
- Weight Capacity: 250 lbs (113.4 kg)



CMA362 C Clamp

- Universal clamp for a variety of structures and transitions to vertical extension column
- Clamp Range: up to 2.75" (70 mm) O.D. (including wood 2 x 4")
- Weight Capacity: 250 lbs (113.6 kg)





STRUCTURAL ADAPTERS cont.

CMA365 Truss Ceiling Adapter

- Universal clamp for square, round, rectangular or I-beam truss
- Clamp Range: 0.75-3" (19-76 mm) O.D.
- Weight Capacity: 250 lbs (113.6 kg)



CMA366 Architectural Spanning Adapter

- Spans truss systems and provides lateral shift capability
- Span Distance: 5-18" (127-457 mm)
- Clamp Range: up to 2" (51 mm) O.D. or 1.9" (48 mm) square tubing
- Weight Capacity: 250 lbs (113.6 kg)



CMA372 Offset Unistrut Adapter

- Features offset for transitioning cables out of extension columns
- Includes spring nuts and bolts to attach to 1.63" (41 mm) unistrut
- Weight Capacity: 500 lbs (227 kg)



WMA1S Wall Mount Arm

- Extends from wall and transitions to 1-1/2" NPT coupler
- Extension: 12" - 18" (30.5-45.7 cm)
- Weight Capacity: up to 150 lbs (68 kg)*



*Varies based on wall construction.

EXTENSION COLUMNS

Common Installations



fixed & adjustable

CMS0XX Fixed Extension Columns

- Aluminum extension columns feature easy installation and maximum strength
- Flow-through cable management with cable exit port (9" [229 mm] or longer)
- Weight Capacity: 500 lbs (227 kg)
- Available in black, silver and white



Model	Length	Model	Length
CMS003*	3" (76 mm)	CMS024	2' (0.6 m)
CMS006*	6" (152 mm)	CMS036	3' (0.9 m)
CMS009	9" (229 mm)	CMS048	4' (1.2 m)
CMS012	12" (305 mm)	CMS060	5' (1.5 m)
CMS018	18" (457 mm)	CMS072	6' (1.8 m)

* Steel construction.

CMS0XX0XX Adjustable Extension Columns

- Aluminum extension columns feature notched design for adjustment without disassembly
- Flow-through cable management with cable exit port (12" [305 mm] or longer)
- Weight Capacity: 500 lbs (227 kg)
- Available in black, silver and white



Model	Length	Model	Length
CMS006009	6-9" (152-229 mm)	CMS0406	4-6' (1.2-1.8 m)
CMS009012	9-12" (229-305 mm)	CMS0507	5-7' (1.5-2.1 m)
CMS012018	12-18" (305-457 mm)	CMS0608	6-8' (1.8-2.4 m)
CMS018024	18-24" (457-610 mm)	CMS0709	7-9' (2.1-2.7 m)
CMS0203	2-3' (0.6-0.9 m)	CMS0810	8-10' (2.4-3.1 m)
CMS0305	3-5' (0.9-1.5 m)	CMS0911	9-11' (2.7-3.4 m)
		CMS1012*	10-12' (3.1-3.7 m)

* Cannot ship by UPS due to length.



COLUMN ACCESSORIES

Common Installations



cable management
CMA274



stability
CMA340

CMA274 Cable Cover for Columns

- Snap-on cover for routing cables alongside extension columns
- Hides cables for a clean appearance
- CMA275: Kit of three CMA274



CMA340 Stabilization Kit for Columns

- Cable system attaches to extension column for increased rigidity
- Includes one pole clamp, four cables and four turnbuckles
- Weight Capacity: 500 lbs (227 kg)



CMA640 Decorative Ring for Columns

- Conceals pass-through hole cut in ceiling structure for extension column
- Hinged design for new or retrofit installations
- Clamp Range: 1.9" (48 mm) O.D. (fits CMS fixed and CMS adjustable inner column only)
- Available in black, chrome and white



CMA643 Decorative Ring for Columns

- Conceals pass-through hole cut in ceiling structure for outer adjustable extension column
- Clamp Range: 2.44" (62 mm) O.D. (fits CMS adjustable outer column only)
- Available in chrome



CMA170 Storage Accessory

- Clamps on to columns for storage of electronic components
- Mounts horizontally or vertically
- Weight Capacity: 25 lbs (11.3 kg)



CMS261 Column Cut-Off Adapter

- Adds 1-1/2" NPT threads to column that has been cut to length
- Adds 2" (51 mm) of height to installation
- Weight Capacity: 500 lbs (226.8 kg)



IN-LINE COLUMN ADAPTERS

Common Installations



vibration
CMA347

CMA270 Coupler

- Connects two extension columns for extended length applications
- Weight Capacity: 500 lbs (227 kg)
- Available in black, silver and white



CMA152 Coupler with Cable Port

- Connects two extension columns and integrates a cable exit port
- Weight Capacity: 500 lbs (227 kg)





IN-LINE COLUMN ADAPTERS cont.

CMA351 Coupler with Swivel

- Connects two extension columns with swivel capability
- Swivel Range: 0-330° (with limited adjustment)
- Weight Capacity: 500 lbs (227 kg)



CMA347 Vibration Isolating Coupler

- Connects two extension columns and isolates vibration transmitted to lower column
- Patented design isolates vibration to reduce image movement
- Weight Capacity: 0-15 lbs (0-6.8 kg) or 15-35 lbs (6.8-15.9 kg)



CMA278 Vinyl End Cap

- Covers the end of extension column for clean appearance
- Pre-cut for routing cables through cover
- Ten caps per kit

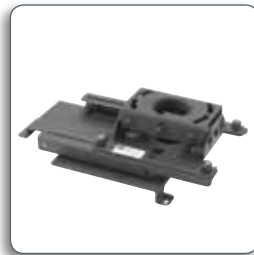
CMA273 End Cap

- Covers the end of extension column for clean appearance

OTHER INSTALLATION ACCESSORIES

LSB100 RPA Projector Lateral Shift Bracket

- Allows lateral shift of projector when used with RPA or RPM mounts
- Maintains quick disconnect feature and includes All-Points Security
- Shift Range: 0-3" (0-76 mm) or 3-5.25" (76-133 mm)
- Weight Capacity: 50 lbs (22.7 kg) at 0-3" or 15 lbs (6.8 kg) at 3-5.25"



LSB101 RPM with Q-Lock Projector Lateral Shift Bracket

- Allows lateral shift of projector when used with RPM mounts
- Maintains quick disconnect feature and includes All-Points Security
- Shift Range: 0-3" (0-76 mm)
- Weight Capacity: 50 lbs (22.7 kg)



LPK1 VCM Flush Mount Adapter

- Adds flush mount capability to an VCM projector mount

SECURITY

Common Installations



classroom
PG2A

PG1A Large Projector Guard

- Fully encloses projector in locked cage to prevent theft or damage
- Adjustable front opening to accommodate different lens positions
- Hinged door for easy access
- Projector Sizes (HxWxD):
RPA - 20.4 x 7.5 x 20" (518 x 190 x 508 mm),
RPM - 20.4 x 6.5 x 20" (518 x 165 x 508 mm)
- Compatible with RPA and RPMA projector mounts
- Available in black and white



PG2A Large Projector Guard

- Fully encloses projector in locked cage to prevent theft or damage
- Adjustable front opening to accommodate different lens positions
- Hinged door for easy access
- Projector Sizes (HxWxD):
RPA - 16 x 7.5 x 16" (406 x 190 x 406 mm),
RPM - 16 x 6.5 x 16" (406 x 165 x 406 mm)
- Compatible with RPA and RPMA projector mounts
- Available in black and white



PL1 RPA Large Projector Lock

- Conceals projector connection points and adds keyed locking to RPA installations
- Three unique locks available (PL1A, PL1B, and PL1C)

