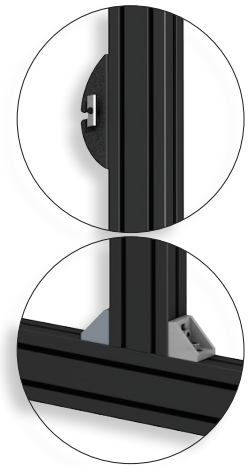


from 500 cm. to 1000 cm. wide



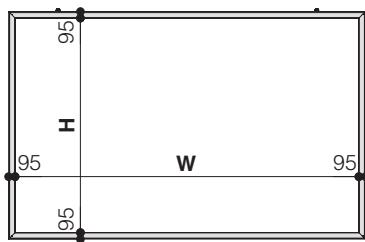
**Floorstands for FlatMax**  
(optional - details p.65)

The **FLATMAX** is a frame suitable to manufacture large frame screens from 5 metres up to 10 metres of width. It is provided with the elastic anchoring system and its advantage is to have shiftable fixing points for the projection cloth. The screen can be wall mounted or it can be installed flying from the ceiling by steel cables.

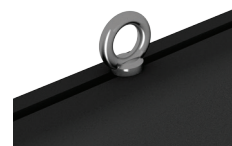
Available 4:3, 16:9 and 16:10 formats or customized sizes.

### TECHNICAL SPECIFICATIONS

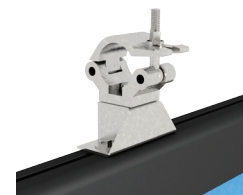
- Smart design and easy to install
- Rugged aluminium profile suitable for big dimensions' screens
- Frame dimensions: 95x55 mm. (WxD)
- Aluminium frame painted with dull black epoxy powders (RAL 9005) and 45° aluminium edges
- Top and bottom wall mounting brackets included
- Eye-bolts for ceiling mounting also included
- For all FLATMAX screens that have to be ceiling mounted, a central aluminium rod will be added at the rear side of the frame (*optional*)
- Projection fabrics are flame-retardant, classification M1 and B1
- Total frame depth including wall mounting brackets: 68 mm.



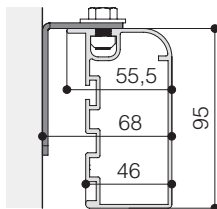
**Elastic anchoring system**



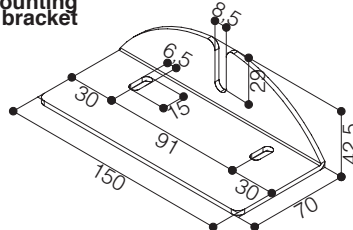
**Lifting ring**



**Truss mounting bracket**  
(optional - p.65)



**Mounting bracket**



Width viewing area	500	600	700	800	900	1000
n. TOP brackets	3	3	3	4	4	4
n. BOTTOM brackets	1	1	1	2	2	2

DIMENSIONS measures in cm			
4:3 Ratio Viewing area (WxH)	16:9 Ratio Viewing area (WxH)	16:10 Ratio Viewing area (WxH)	Approx. net weight (Kg)
500 x 375	500 x 281	500 x 312	53
600 x 450	600 x 337	600 x 375	65
700 x 525	700 x 394	700 x 437	76
800 x 600	800 x 450	800 x 500	87
900 x 675	900 x 506	900 x 562	98
-	1000 x 562	1000 x 625	108

PROJECTION CLOTHS			
Front projection surfaces	Gain	Rear projection surfaces	Gain
White	1.2	Rear Plus	1.1
White Pearl	1.2	Rear Lux R114	2.5
Microholes	1.0	Front Rear	0.9

Warranty: 24 months

