



# GIOTTO PROFESSIONAL



**GIOTTO PROFESSIONAL** is the most innovative **UPGRADABLE** electric **IN-CEILING** projection screen on the market. Its mechanical construction makes it an ideal and unique solution for in-ceiling installations both in residential and AV professional environments.

The Giotto is easy to mount and has the possibility to install the roller tube with projection cloth **after** the **installation** is finished.

This peculiar feature allows also to easily substitute the projection surface if required by the customer for maintenance reasons or necessity to upgrade the projection cloth.

Moreover it is also possible to customize the product asking for a **DIFFERENT housing COLOUR**.

*It is available with a wide range of projection surfaces and in all possible bespoke measures.*

- Lower trapdoor offers the possibility to **OPEN** it **MANUALLY** for maintenance or projection surface upgrade purposes
- **REMOVABLE** side parts of the bezel for an easy housing installation
- Fast and silent motor provides smooth and quiet rolling down
- Housing specific for IN-CEILING use manufactured from aluminum sprayed with white epoxy powders (RAL 9010)
- White dowel bar: height 38 mm. – depth 20 mm.\*
- On/off switcher included
- Two ceiling mounting brackets with four threaded rods 100 cm. long
- Flame retardant projection surfaces
- Power cable located at RIGHT side of the screen housing, seen from the front
- Side black borders of 5 cm. width (OPTIONAL)\*\*
- Reverse wound (OPTIONAL)
- **DIFFERENT HOUSING COLOURS AVAILABLE (OPTIONAL)**
- **AVAILABLE ACCESSORIES:** RF remote control with integrated or external receiver, Interface switch 12 Volt, Low voltage contact interface

\*On Giotto Professional 450 cm. of width, dowel bar is black and 35 mm. high.

\*\*On Giotto Professional with black borders, dowel bar is black and 35 mm. high.

## TECHNICAL SPECIFICATIONS

1:1 Ratio Viewing area WxH	4:3 Ratio Viewing area WxH	Overall dimensions			Front projection surfaces		Rear projection surfaces		Approx. net weight
cm. 160x160	cm. 160x120	A cm. 190	B cm. 180,5	C cm. 163	White	gain 1.2	Rear Plus	gain 1.1	Kg. 22
cm. 180x180	cm. 180x135	A cm. 210	B cm. 200,5	C cm. 183	Matte White	gain 1.2	FrontRear	gain 0.9	Kg. 25
cm. 200x200	cm. 200x150	A cm. 230	B cm. 220,5	C cm. 203	Lumi Grey	gain 0.8	<b>(no black borders)</b>		Kg. 28
cm. 220x220	cm. 220x165	A cm. 250	B cm. 240,5	C cm. 223	Cinesound	gain 0.7			Kg. 31
cm. 250x250	cm. 250x190	A cm. 280	B cm. 270,5	C cm. 253	Microperforated	gain 1.1			Kg. 35
cm. 300x300	cm. 300x225	A cm. 330	B cm. 320,5	C cm. 303	LumiGrey Microperforated	gain 0.8			Kg. 43
cm. 350x350	cm. 350x265	A cm. 380	B cm. 370,5	C cm. 353	High Matte*	gain 1.25			Kg. 50
cm. 400x400	cm. 400x300	A cm. 430	B cm. 420,5	C cm. 403	Hi-Light*	gain 2.3			Kg. 58
-	cm. 450x340	A cm. 480	B cm. 470,5	C cm. 453					Kg. 65

\*Giotto Professional is available with High Matte and Hi-Light surfaces up to 250x190 cm. (4:3 ratio) and 220x220 cm. (1:1 ratio).

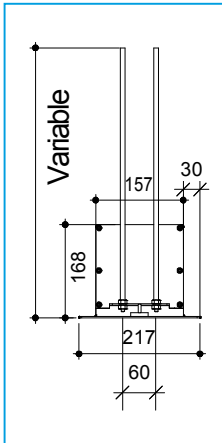
**Warranty: 5 years on the motor – 24 months on the other components**

# TECHNICAL SPECIFICATIONS

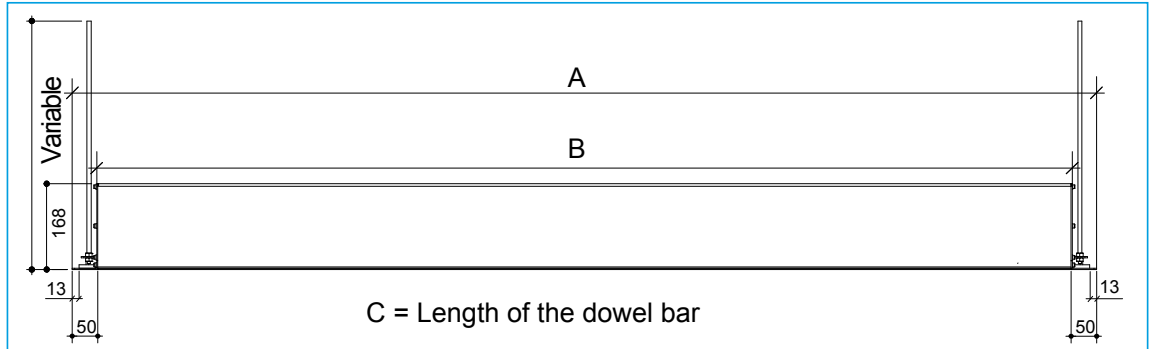
## LENGTH OF THE HOLE to be made in the false ceiling

SCREEN MODEL	LENGTH
GIOTTO PROFESSIONAL	Width of the viewing area + cm. 28,5

**WIDTH OF THE HOLE to be made in the false ceiling: cm. 16,5**



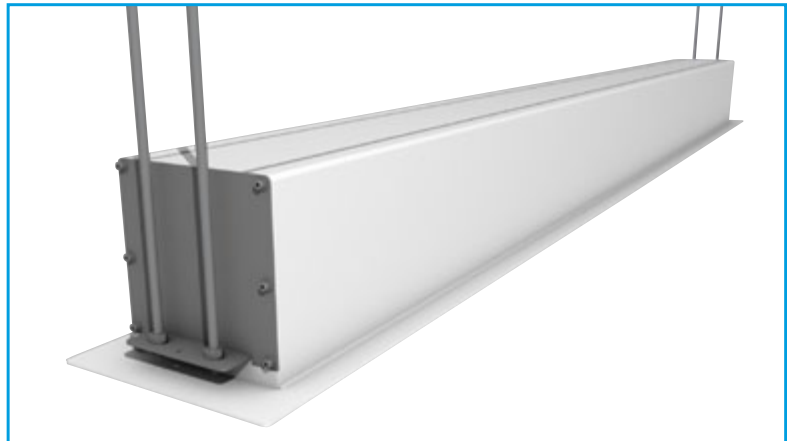
Side View



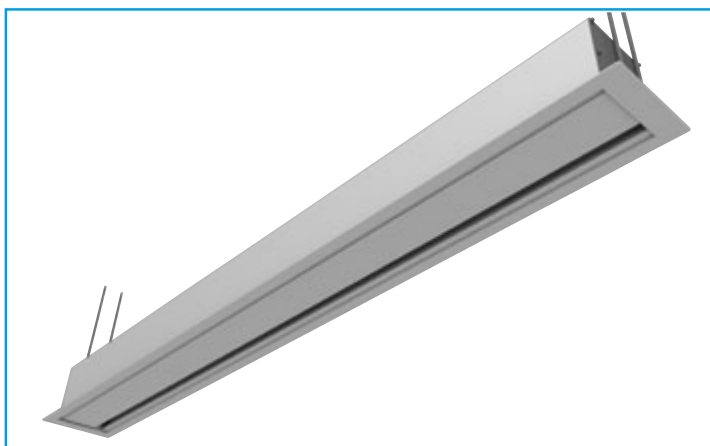
Front View



Possibility to **OPEN MANUALLY** the lower **TRAPDOOR** for maintenance or projection surface upgrade purposes.



Cabinet Side View



Bottom View Screen Closed

### Motor characteristics

- **Measures up to 300 cm. of width (4:3 ratio)**  
Power: 6 Nm  
Speed: 17 rpm  
Consumption: 137 W  
Certification: IMQ
- **Measures from 300 cm. of width (1:1 ratio) and above**  
Power: 10 Nm  
Speed: 17 rpm  
Consumption: 156 W  
Certification: IMQ