

televic
conference

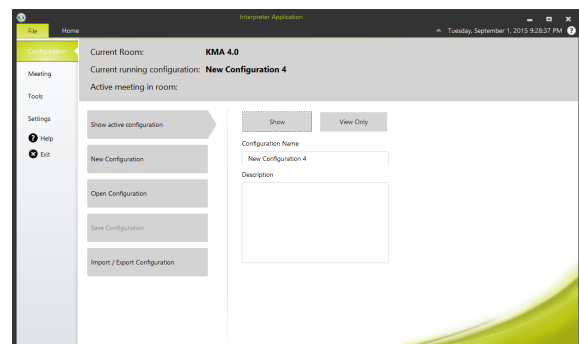
CoCon Interpretation



Description

CoCon is a software suite for conference management & assistance, that opens up a host of options and configuration setting to control every aspect of the meeting experience. CoCon is connected to a central conference unit that controls a number of microphones and other conference equipment. The software interacts with the central conference unit to enable various functionalities and views on the conference. That is why CoCon is conceived as a client-server framework. The CoCon Discussion Module serves as the base of the suite and is needed to run other plugin modules.

CoCon Interpretation [Client-side]



CoCon Interpretation allows you to configure the language channels in the Plexus system, used for simultaneous interpretation. The Interpretation

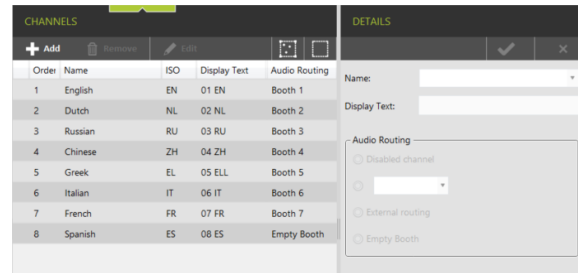
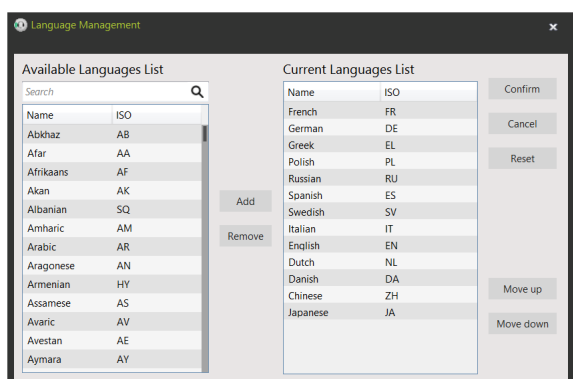
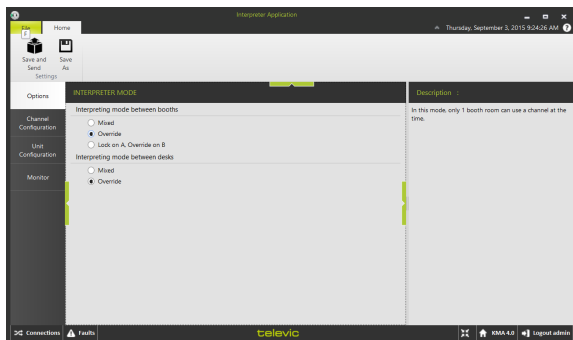
module is designed to work with Televic's Lingua Interpreter Desk (**71.98.2900 & 71.98.2901**)

It permits you to configure the Lingua Interpreter Desk settings. It also allows you to select the channels and modify the display text on channel selectors, as well as choose audio routing for each channel, external audio routing, a specific booth or even a disabled channel. Additionally, relays and B/C channels can be defined. Finally, all booth activity can be monitored from the CoCon Interpretation module.

Features

- Fine-grained control over each Televic Interpreter Desk
- Open, save and load different presets and configurations for easy and quick access
- Import and export settings
- Rapid channel configuration
- Comprehensive language management (all ISO 639-1 codes included for swift access)
- Simple audio routing (disable channels, select booth numbers, route audio externally)

Screenshots



System Requirements

Hardware Requirements

Room Server

- Processor: Intel i5 2 GHz or higher.
- RAM: minimum 4 GB
- Free disk space: minimum 10 GB
- Network connectivity: at least 100 MB/s

Client Applications

- Processor: Intel® Dual-Core 2 GHz or higher
- RAM: Minimum 4 GB.
- Recommended GPU: supporting DirectX 9.0 or better
- Free disk space: Minimum 10 GB
- Network connectivity: at least 100 MB/s

Network requirements for Central Units connecting over TCP/IP:

- Available bandwidth of at least 100 Mb/s for each CoCon Room server/Central Unit connection

Software Requirements:

- Windows 7
- Windows 8
- Windows 10

Each PC installed with a CoCon component (any server or client application) requires the .Net Framework 4.5. This will be installed automatically when CoCon is being installed.

All information copyright **Televic Conference**, 2015. Version 1.0, October 2015

—
Leo Bekaertlaan 1 · 8870 Izegem · Belgium

Tel. +32 51 30 30 45

Fax +32 51 31 06 70

E-mail: conference@televic.com

Web: <http://www.televic-conference.com>

Televic reserves the right to change this document without notice.