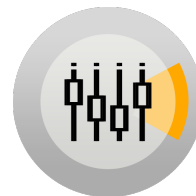


**televic**  
conference

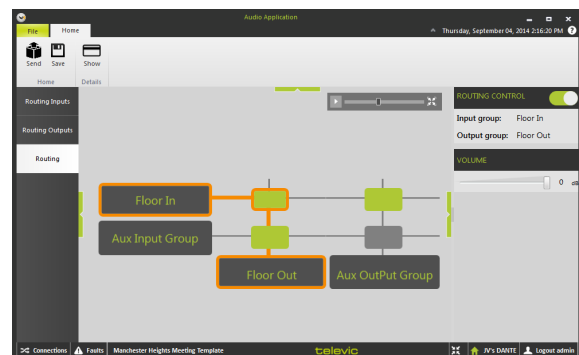
## CoCon Audio Routing



### Description

CoCon is a software suite for conference management & assistance, that opens up a host of options and configuration setting to control every aspect of the meeting experience. CoCon is connected to a central conference unit that controls a number of microphones and other conference equipment. The software interacts with the central conference unit to enable various functionalities and views on the conference. That is why CoCon is conceived as a client-server framework. The CoCon Discussion Module serves as the base of the suite and is needed to run other plugin modules.

### CoCon Audio Routing [Client-side]



CoCon Routing allows you to configure the audio routing options. It provides a detailed and effortless configuration of inputs and outputs, visualized by a matrix.

It includes the following options:

- Creating groups of audio input and output components (microphones, auxiliary input/output, Dante input/output etc.)
- Visualizing the various routing groups as a matrix
- Controlling the audio routing matrix
- Configuration of interpreter channels to external channels

All of the audio settings at any one time are defined as an audio configuration. This includes the following:

- A set of audio routing input groups
- A set of audio routing output groups
- A matrix resulting from the previous two datasets, and the settings of this matrix.

*Each PC installed with a CoCon component (any server or client application) requires the .Net Framework 4.5. This will be installed automatically when CoCon is being installed.*

All information copyright **Televic Conference**, 2015. Version 0.5, October 2015

—  
Leo Bekaertlaan 1 · 8870 Izegem · Belgium  
Tel. +32 51 30 30 45  
Fax +32 51 31 06 70  
E-mail: [conference@televic.com](mailto:conference@televic.com)  
Web: <http://www.televic-conference.com>  
*Televic reserves the right to change this document without notice.*

## Features

- Endless options for input & output
- Convenient visualization
- Grouping & configuration options

## System Requirements

### Hardware Requirements

Room Server

- Processor: Intel i5 2 GHz or higher.
- RAM: minimum 4 GB
- Free disk space: minimum 10 GB
- Network connectivity: at least 100 MB/s

Client Applications

- Processor: Intel® Dual-Core 2 GHz or higher
- RAM: Minimum 4 GB.
- Recommended GPU: supporting DirectX 9.0 or better
- Free disk space: Minimum 10 GB
- Network connectivity: at least 100 MB/s

### Network requirements for Central Units connecting over TCP/IP:

- Available bandwidth of at least 100 Mb/s for each CoCon Room server/Central Unit connection

### Software Requirements:

- Windows 7
- Windows 8
- Windows 10