

televic
conference

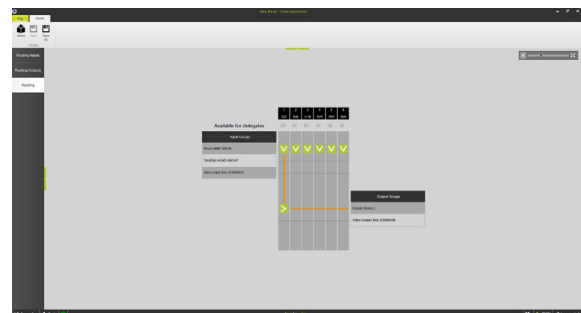
CoCon Video Routing



Description

CoCon is a software suite for conference management & assistance, that opens up a host of options and configuration settings to control every aspect of the meeting experience. CoCon is connected to a central conference unit that controls a number of microphones and other conference equipment. The software interacts with the central conference unit to enable various functionalities and views on the conference. That is why CoCon is conceived as a client-server framework. The CoCon Discussion Module serves as the base of the suite and is needed to run other plugin modules.

CoCon Video Routing [Client-side]



CoCon Video Routing allows you to configure the video input/output devices in the Televic Plixus network. These include: V-IN Box, webcam units (including T-Cam), SDI on Plixus MME, V-OUT Box, Lingua ID-MM, and uniCOS.

It includes the following options:

- The possibility to assign video input devices to the video request group
- Assign webcam units to the talking head group
- Assign video input devices on a specific video stream
- Create video output groups consisting of video output boxes or Lingua ID MM units
- Assign a label to each video stream
- Visualize the inputs or input groups and assign them to a specific video stream
- Configure which video streams are available on video channel selectors
- Assign a specific video stream to a video output device or video output group

All of the video settings at any one time are defined as a video configuration. This video configuration can be created, stored, and edited through the file menu.

Consequently, CoCon Video Routing allows you to create the following:

- A set of video routing input groups
- A set of video routing output groups
- A matrix resulting from the previous two datasets, and the settings of this matrix.

Features

- Endless options for input & output
- Convenient visualization
- Grouping & configuration options
- Routing cross points
- API commands to change routing configurations with control systems
- Possibility to push video streams to all uniCOS units from the operator application

System Requirements

Hardware Requirements

Room Server

- Processor: Intel i5 2 GHz or higher.
- RAM: minimum 4 GB
- Free disk space: minimum 10 GB
- Network connectivity: at least 100 MB/s

Client Applications

- Processor: Intel® Dual-Core 2 GHz or higher
- RAM: Minimum 4 GB.
- Recommended GPU: supporting DirectX 9.0 or better
- Free disk space: Minimum 10 GB
- Network connectivity: at least 100 MB/s

Network requirements for Central Units connecting over TCP/IP:

- Available bandwidth of at least 100 Mb/s for each CoCon Room server/Central Unit connection

Software Requirements:

- Windows 7
- Windows 8
- Windows 10

Each PC installed with a CoCon component (any server or client application) requires the .Net Framework 4.5. This will be installed automatically when CoCon is being installed.

All information copyright **Televic Conference**, 2017. Version 1.0, May 2017

—
 Leo Bekaertlaan 1 · 8870 Izegem · Belgium
 Tel. +32 51 30 30 45
 Fax +32 51 31 06 70
 E-mail: conference@televic.com
 Web: <http://www.televic-conference.com>
Televic reserves the right to change this document without notice.