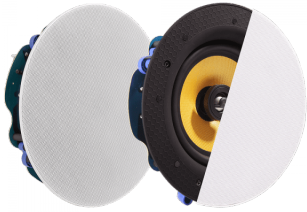


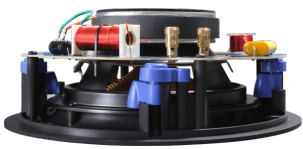
Pair Ceiling Loudspeakers

CS-1900 EU SAP: 4815044
AV-1800+CS-1900 EU SAP: 5356157
TC3-AMP+CS-1900 EU SAP: 5356158
vav.link/cs-1900



Slim bezel-less magnetic grille
Premium Kevlar 6.5" Woofer
Large 0.75" Titanium Tweeter
Passive Crossover

Redesigned from the ground up, the CS-1900 ceiling speakers are loaded with quality components resulting in clean, powerful sound. They use the ceiling void as an infinite baffle – allowing un-restricted driver excursion – all of which adds up more bass. Low impedance speakers like these offer better sound than 100/70v line speakers. Perfect for meeting spaces.



Front EQ

The simple attenuation switch on the front allows the user to fine-tune the EQ for the environment.

Titanium Dome

The large tweeter is made from premium material and pivots to help installers setup the soundscape. Titanium ensures long, stable performance and reduces distortion.

Woven Kevlar

Kevlar gives smooth audio with incredible detail and transparency. The cone is held in place with a butyl rubber surround to extend the life of the loudspeaker.

Magnetic Grill

The grill clips into place magnetically once the speakers are secured.

Invisible

The grill extends all the way to the edge of the speaker resulting in virtually no visible edge. This ultra thin grille allows the technology to visually disappear.

Simple to fit

A cutout template is included so the installer can easily trace the cut line in the ceiling tile. Cut a 210 mm (8.3") hole and turn the dog-leg screws from below to fix the speaker; it's quick and easy.

Shallow

Only 87 mm (3.4") deep, the CS-1900 can be placed anywhere around the room to optimally disperse the sound. They fit in any environment which has a false ceiling.

Crossover

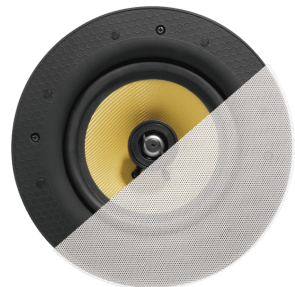
Gold plated terminals and a quality crossover circuit is included which splits the work between the woofer and tweeter.

High Sensitivity

Ceiling speakers often lack the power of wall speakers, but these have a higher sensitivity of 90dB to cut through high-noise presentation environments.

Thick Ceiling?

The clamps are an extra long 35 mm (1.4") to cope with ceilings made of very thick material. Most ceiling speakers can only cope with tiles up to 15 mm (0.6") thick.



VISION

MANUAL

Cutout template

EN PDF 94.32 KB

files.visionaudiovisual.com/products/CS-1900/manuals/CS-1900_cutout_template.pdf

Manual

EN PDF 45.15 MB

files.visionaudiovisual.com/products/CS-1900/manuals/CS-1900_manual.pdf

Manual en

EN PDF 1.27 MB

files.visionaudiovisual.com/products/CS-1900/manuals/CS-1900_manual_en.pdf

IMAGE

Product Images

ZIP 42.42 MB

<files.visionaudiovisual.com/products/CS-1900/images/CS-1900.zip>

SPECIFICATIONS

LOUDSPEAKER DIMENSIONS

227 x 87 mm / 9.0" x 3.6"

CUTOUT SIZE

210 mm / 8.3"

CARTON DIMENSIONS

267 x 265 x 225 mm / 10.5" x 10.4" x 8.9" (contains a pair)

SPEAKER WEIGHT

1.52 kg / 3.4 lbs (each)

CARTON WEIGHT

4 kg / 8.8 lbs (contains a pair)

POWER HANDLING

60 Watt RMS

WOOFER

6.5" Woven Kevlar

TWEETER

0.75" Titanium Dome

CONSTRUCTION MATERIAL

ABS Plastic

SPEAKER TERMINALS

Spring post

NOMINAL IMPEDANCE

8 ohms

SENSITIVITY

90 dB (1w/1m)

FREQUENCY RESPONSE

60Hz-20kHz

COLOUR

Cone: Yellow Basket: Black Grill: White

WARRANTY

Lifetime return-to-base

COMPLIANCES

RoHS, WEEE, REACH

ORDER PART CODE

CS-1900 [EU SAP: 4815044 / US SAP:] AV-1800+CS-1900 bundle [EU SAP: 5356157 / US SAP:]

TC3-AMP+CS-1900 bundle [EU SAP: 5356158 / US SAP:]