



# Telescopic Webcam Ceiling Mount

TM-WEBCAM EU SAP: 5708369

[vav.link/tm-webcam](http://vav.link/tm-webcam)

Standard tripod mount screw fits any webcam

Fits [Logitech Brio](#) webcam for [Microsoft Whiteboard](#)

Fits [Huddly](#) cameras

Can fix to wall as boom

Overall length 440-735 mm (17.3" – 28.9")

Pole can be removed to mount as close as possible to ceiling

**The TM-WEBCAM is a universal webcam ceiling bracket for mounting a USB camera safely to a ceiling. The telescopic design allows fast deployment and adjustment. It has a greater range than most other telescopic mounts.**

**There is a growing demand to mount USB cameras in the ceiling for meeting applications. For example Microsoft Whiteboard uses a ceiling-mounted camera to digitize writing on a physical whiteboard for collaboration.**



## One-Person Installation

An example of thoughtful design is the length adjustment clamp system which requires only one hand.

## Flush-Mount Option

The pole can be removed for "flush-mounting" the camera as close to the ceiling as possible.

## Sloping Ceilings

A top tilting mechanism is included which tilts to a full 90 degrees, allowing it to fix to the side of a ceiling joist. Or you can use the bracket as a boom fixed to a wall if need be.

## Wall Boom Applications

The bracket can alternatively be fixed horizontally to a wall to be used as a boom.

## Telescopic

The overall length is between 440-735 mm (17.3" – 28.9"). *Note: the length of this bracket cannot be extended.*

## Easy fit

The webcam fixes using the standard tripod screw which is included.

## Cable Management

Just drop the cables down through the pole to terminate to the camera for a professional look. Cables are out of sight.

## Tools Included

A spanner and pin-hex key are included. Vision also includes a hex-key bit for a power drill to speed up installation.

## Secure

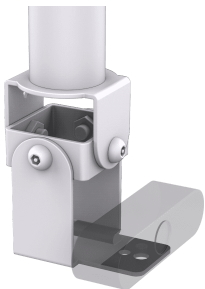
Quick-release mechanisms make life easier for thieves, so the TM-WEBCAM is secure and features security bolts.

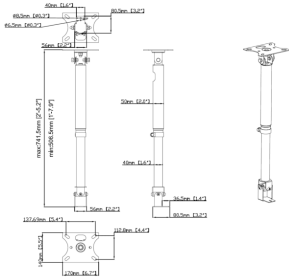
## Camera Tilt

The bottom bracket is adjustable so you can direct the camera where you need to.

## Ceiling Trim Disc

For applications where the pole drops down through a hole in a false ceiling, a plastic trim disc is included to tidy the hole.





**VISION**

## MANUAL

---

Manual

**EN PDF 172.84 KB**

[files.visionaudiovisual.com/products/TM-WEBCAM/manuals/TM-WEBCAM\\_manual.pdf](files.visionaudiovisual.com/products/TM-WEBCAM/manuals/TM-WEBCAM_manual.pdf)

## IMAGE

---

Product Images

**ZIP 3.61 MB**

<files.visionaudiovisual.com/products/TM-WEBCAM/images/TM-WEBCAM.zip>

## SPECIFICATIONS

---

### BOX DIMENSIONS

393 x 150 x 80 mm / 15.47" x 5.91" x 3.15"

### PACKAGED WEIGHT

3 kg / 6.6 lbs

### SAFE WORKING LOAD

10kg / 22.1 lbs

### COLOUR

Satin White

### ACCESSORIES INCLUDED

1 x H50 Pin-Hex key 1 x H50 power drill hex bit 1 x 17mm (0.7") Spanner 4 x M8 50mm (2.0") Ceiling Fixtures with rawl plugs 1 x Ceiling Trim Disc 1 x 1/4-20 UNC Screw 9 mm long 1 x M6 12mm (0.47") Screw

### WARRANTY

Lifetime return-to-base

### COMPLIANCES

n/a

### ORDER PART CODE

TM-WEBCAM [EU SAP: 5708369 / US SAP: tba]