



WyreStorm - Because the Technology Matters.

Introduction

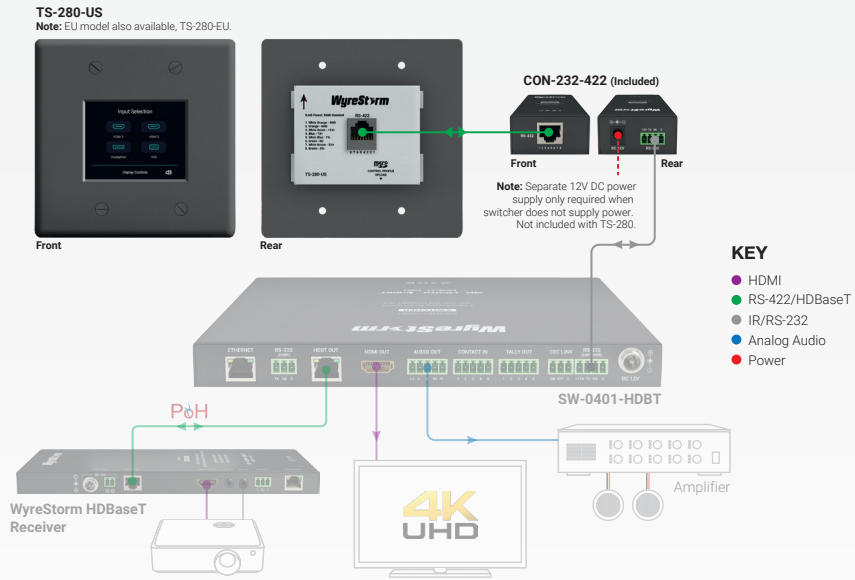
Introducing the TS-280 to the WyreStorm range. The 2.8" colour touchscreen can control any product within the WyreStorm range; whether it be a presentation switcher or matrix. With ease of use in mind the TS-280 is as easy to use as it is to set up, with pre-configured UI's ready to upload in just seconds via the MicroSD card slot on the rear.

The UI's are simple to use with large buttons clearly labeled for each major function and navigation controls (where applicable) to move between pages. Using a standard RJ45 connection on the rear and RS-422 communication, the TS-280 also comes with an in-line RS-422 to RS-232 converter which doubles as a power-injector if used with a product that doesn't feed the 12v power.

Key Features

- 2.8" color touchscreen perfect for WyreStorm switcher control
- Backlit with automatic power off and wake on touch
- Pre-configured UI's designed for simple end-user experience
- Easy update: Download UI from wyrestorm.com and load via MicroSD card
- RJ45 connection and RS-422 communication to included RS-232 converter
- 300m/984ft transmission range to host device

	Touchscreen	Touchscreen Interface Module	
Audio and Video			
Switcher Control	1x RS-422: 8-pin RJ-45 Female	1x RS-232: 4-pin Phoenix	
Max Communication Distance	100m/328ft Interface to Touchscreen	15.24m/50ft Switcher to Interface	
Power			
Power Supply	12VDC from Touchscreen Interface Module	12V DC from switcher or separate PSU (not included)	
Max Power Consumption	0.84W	0.36W	
Environmental			
Operating Temperature	0 to +45°C (32 to +113 °F), 10% to 90%, non-condensing		
Storage Temperature	-20 to +70°C (-4 to +158 °F), 10% to 90%, non-condensing		
Maximum BTU	Transmitter: 24 BTU/hr Receiver: 58 BTU/hr		
Dimensions and Weight			
	TS-280-US	TS-280-EU	
Rack Units/Wall Box	2 Gang	2 Gang	<1U
Height With Without Feet	114mm/4.49in	86mm/3.39in	25mm/0.99in
Width With Without Brackets	117mm/4.61in	147mm/5.79in	80.2mm/3.16in
Depth With Without Handles	32.1mm/1.27in	32.1mm/1.27in	50mm/1.97in
Weight	0.30kg/0.66lbs	0.28kg/0.62lbs	0.14kg/0.30lbs
Regulatory			
Safety and Emission	CE FCC RoHS		



Note: WyreStorm reserves the right to change product specification, appearance or dimensions of this product at any time without prior notice.