

AH

é[®] SISTEMAS
VISUAL COMMUNICATION SOLUTIONS
MULTIMEDIA PRODUCTS

ARTHUR HOLM

ALBIRAL DISPLAY SOLUTIONS SL

Barcelona – Paris – Madrid – Milan

Headquarters

C/Fátima, 25
Sant Hipòlit de Voltregà
08512 Barcelona – SPAIN
TEL: + 34 938 502 376 / 383
FAX: + 34 938 502 550

EMAIL: marketing@arthurholm.com
www.arthurholm.com

Barcelona

C/Prats de Molló, 13
08021 Barcelona – SPAIN
TEL: + 34 935 324 424
FAX: + 34 938 502 550

Madrid

C/Vázquez de Mella, 23
28017 Madrid – SPAIN
TEL: + 34 913 681 190
FAX: + 34 913 681 197

Paris

11 Rue du Commandant Jean Duhail
94120 Fontenay Sous Bois – FRANCE
TEL: + 33 777 922 364

Milan

Viale Giovanni Suzzani 96/98
20162 Milano – ITALY

© Arthur Holm 2020

*Arthur Holm is a registered brand by Albiral Display Solutions SL.
Specifications subject to changes without previous notice.*



Design: **Pablo Luces**
Product photography: **Joan Pujol Creus**
Printers: **Originarte**

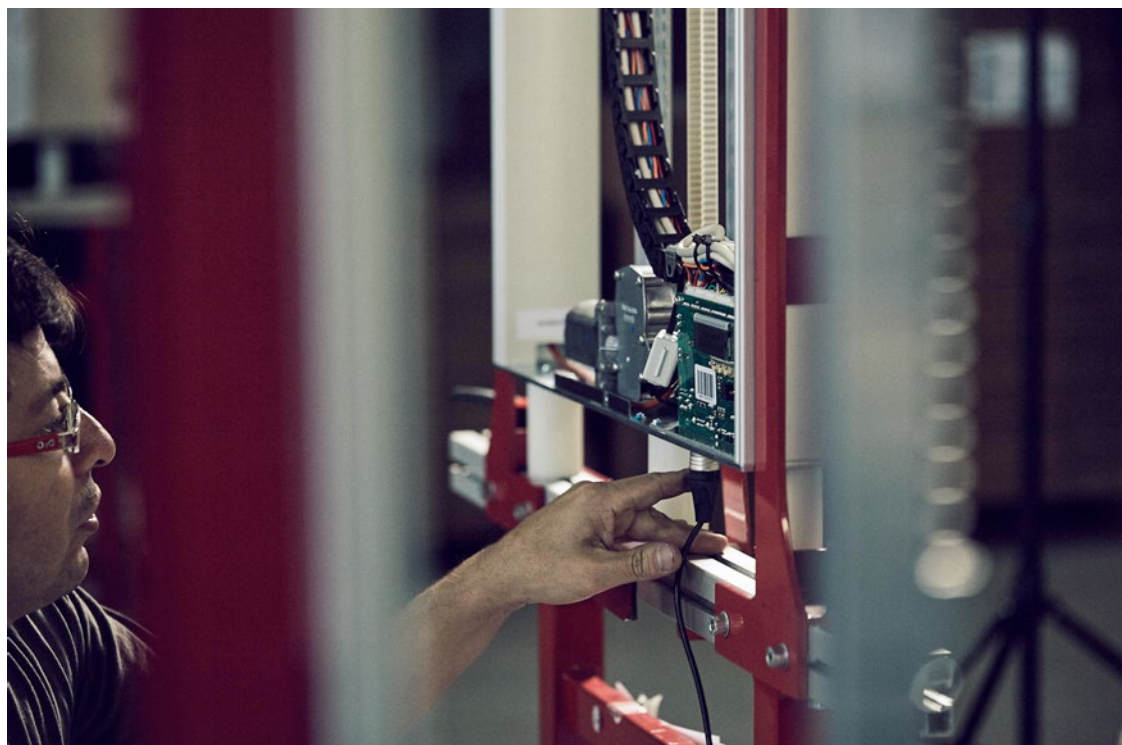
TECHNOLOGY SERVING DESIGN



“ We believe that meeting spaces are more important than ever. Meeting spaces should provide unique and personalised inspiring experiences to help making the best decisions while enhancing creativity. We want to inspire and to shape the meeting spaces”

CONTENTS

COMPANY		MONITORS		MONITORS		SOLUTIONS		SOLUTIONS		CUSTOMISATION	
Our origins	9	Motorised monitors	15	Manual Monitors	67	Microphones – motorised	95	Cable cubby	127	The Art of Customisation	149
Product Highlights	10	DB2	16	AH1	68	DynamicTalk	96	DynamicCableRetract	128		
Corporate Statements	11	DB2Share	20	AH2	72	DynamicTalk Undercover	98	DynamicConnect	130	APPENDIX	
		DynamicX2	22	Gooseneck	76	DynamicTalkH	102	ConnectionBox	134	References	156
		DynamicX2 UnderCover	26			DynamicTalkB	104			Awards	158
		DynamicX2Talk	30	Wall Monitors	81	MicConnect	106	Signal selection, share, distribution, control & diagnose	137	Patents	158
		DynamicX2KM	32	Rise	82						
		Dynamic2	34	Drop	86	Motorised Speakers	111	ERT	138		
		Dynamic3	38			DynamicSpeaker	112	DynamicShare	140		
		Dynamic3Talk	42	Podiums	91			DynamicLoop	144		
		Dynamic3Reverse	46	AHPylon	92	Cameras	117	AHLink	146		
		Dynamic1H	48			DynamicVision	118				
		Dynamic1Twin	52								
		DB1Twin	54			Courtesy	121				
		DynamicSignatureDisplay	58			Courtesy Box	122				
		DynamicChairDisplay	60								
		DynamicReceptionMonitor	62								



OUR ORIGINS

0.1

Danish craftsmanship, Mediterranean soul

Arthur Holm has its origins in the Danish furniture designer Jorgen Alex Jensen and the work he carried out during the sixties and the seventies. His design inspiration and his concept of ergonomics have been continued by his family who is the design force behind Arthur Holm.

We strongly believe that meeting spaces should provide unique and inspiring experiences to help enhancing creativity and to help making the best decisions. This is why we create innovative technology solutions that seamlessly integrate in furniture design: beautiful, invisible, intuitive and compatible with third devices.

Arthur Holm is the result of combining the Scandinavian design tradition with the Mediterranean creativity, passion and emotion; a wide product range built on more than 25 years of craftsmanship and in constant evolution. Our team puts its heart, passion and pride in all our designs.

HIGHLIGHTS

0.2

We are proud of

- 33 patents
- 2 RedDot Design Awards
- 1 German Design Award
- 7 Technology Awards
- Best quality materials
- Own designed video controller & mechanisms
- Long durability products
- Worldwide support

COMPANY

0.3

Our mission

Provide meeting rooms with solutions featuring personalised, exclusive design and innovative technology to optimise the space, share information and help decision making.

Our vision

Inspire decision makers through moving, innovative and exclusive design technology for seamless integration in the furniture.

MOTORISED MONITORS FOR FURNITURE INTEGRATION

1.1



We come from a long tradition designing & making motorised monitors

It is said that creative approach comes together with a personality's feature: the strength and the courage to move forward. The courage to try and to make mistakes. The courage to fall and to get back on one's feet. To evolve. And it is also said that companies need to continually innovate to grow, or even to survive. And this is our story: we started manufacturing motorised monitors for furniture integration in the late 1990s: motorised CRT monitors that were ahead of their time.

CRT monitors occupied almost the entire desk and weighed a lot. A CRT monitor from the nineties could have a width of more than 40 cm. So, designing a motorised system to hide a CRT monitor inside a meeting table was not an easy task. But we made it! We designed and manufactured an electrically foldable monitor to integrate into the surface of a table, so that the back of the table could be veneered and streamlined with the same table's construction material. The goal was to integrate technology as discreetly as possible in the furniture. A whole premonition!

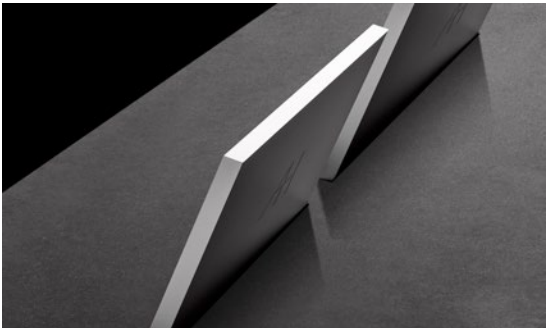
And more than 20 years later, we keep on providing the largest motorised monitor range on the market!

DB2: The game changer

RedDot Design Award

HIGHLIGHTS

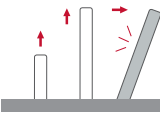
- The smallest impact on the table surface
- One operation sensor on top of the aluminium housing
- Front double sided anti-reflective 2 sides coating 2 mm glass
- Energy saving, low consumption video controller
- AH-AMMC Auto mechanical movement calibration
- Wireless connectivity for setup and control
- No cover plate required
- 20 mm max thickness



DB2

The monitor that has the smallest impact on the table surface.

Arthur Holm's DB2 is a motorised retractable monitor range that creates minimum impact on the furniture's design. It is easy to integrate, intuitive to use (one simple operation sensor located on the top of the monitor) and almost invisible (no cover plate, neatly streamlined into the furniture) when not in operation. **DB2** provides a harmonious silent drive with variable speeds. With a maximum thickness of 20 mm, this monitor range is elegant, beautiful from all angles and can be veneered for a seamless integration in the furniture, creating a long lasting user's experience and delivering an exceptional image's quality. The monitors are equipped with AH-AMMC: an auto mechanical calibration movement system and the use of the **Arthur Holm's ERT** will enable the address configuration of all the monitors installed in a table by simply pressing a button. The **AHlink** app allows a wireless access to the test and adjustment functions without removing the unit from the table.





Elegant, secure and easy-to-use sharing solution

- RedDot Design Award
- ★ AV Technology Award

HIGHLIGHTS

- The smallest impact on the table surface
- Includes a retractable HDMI cable and on glass touch buttons
- Front double sided anti-reflective 2 sides coating 2 mm glass
- Energy saving, low consumption video controller
- AH-AMMC Auto mechanical movement calibration
- Wireless connectivity for setup and control
- No cover plate required
- 20 mm max thickness

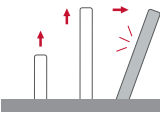


DB2 Share

Secure, accurate and streamlined solution for collaboration.

Arthur Holm's DB2 Share is a motorised retractable communication solution that creates minimum impact on the furniture's design. It is easy to integrate, intuitive to use (one simple operation sensor located on the top of the monitor) and almost invisible (no cover plate, neatly streamlined into the furniture) when not in operation. This solution provides full control to view and share documents and videos with a motorised retractable HDMI cable that raises as an extension of the slick design of the monitor.

By touching directly on the monitor, users can select the HDMI input and share it. Monitors are equipped with 2 HDMI-HDCP compliant inputs and 1 output, allowing the daisy chain of a maximum of 20 devices. An Interactive Setup Display allowing the control, setup and diagnose of the monitors. Monitors provide RS-422 I/O allowing the remote control of movements, speeds, safety settings, brightness, contrast and backlight. The monitors are equipped with AH-AMMC: an auto mechanical calibration movement system. The use of the **Arthur Holm's ERT** will enable the address configuration of all the monitors installed in a table by simply pressing a button. The **AHlink** Android and iOS app allows getting the monitor's serial number without removing the unit from the table and allows access to the setup and control menus.



Flexible and customisable motorised retractable monitor

HIGHLIGHTS

- Patented single engine mechanism for up/down and tilt movements
- Milled aluminium housing with a contemporary design
- Stainless steel customisable cover plate
- Front double sided anti-reflecting 2 sides coating 3 mm black edged glass
- AH-AMMC Auto Mechanical Movement Calibration
- Wireless connectivity for setup and control
- Automatic 20° tilt angle

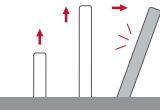


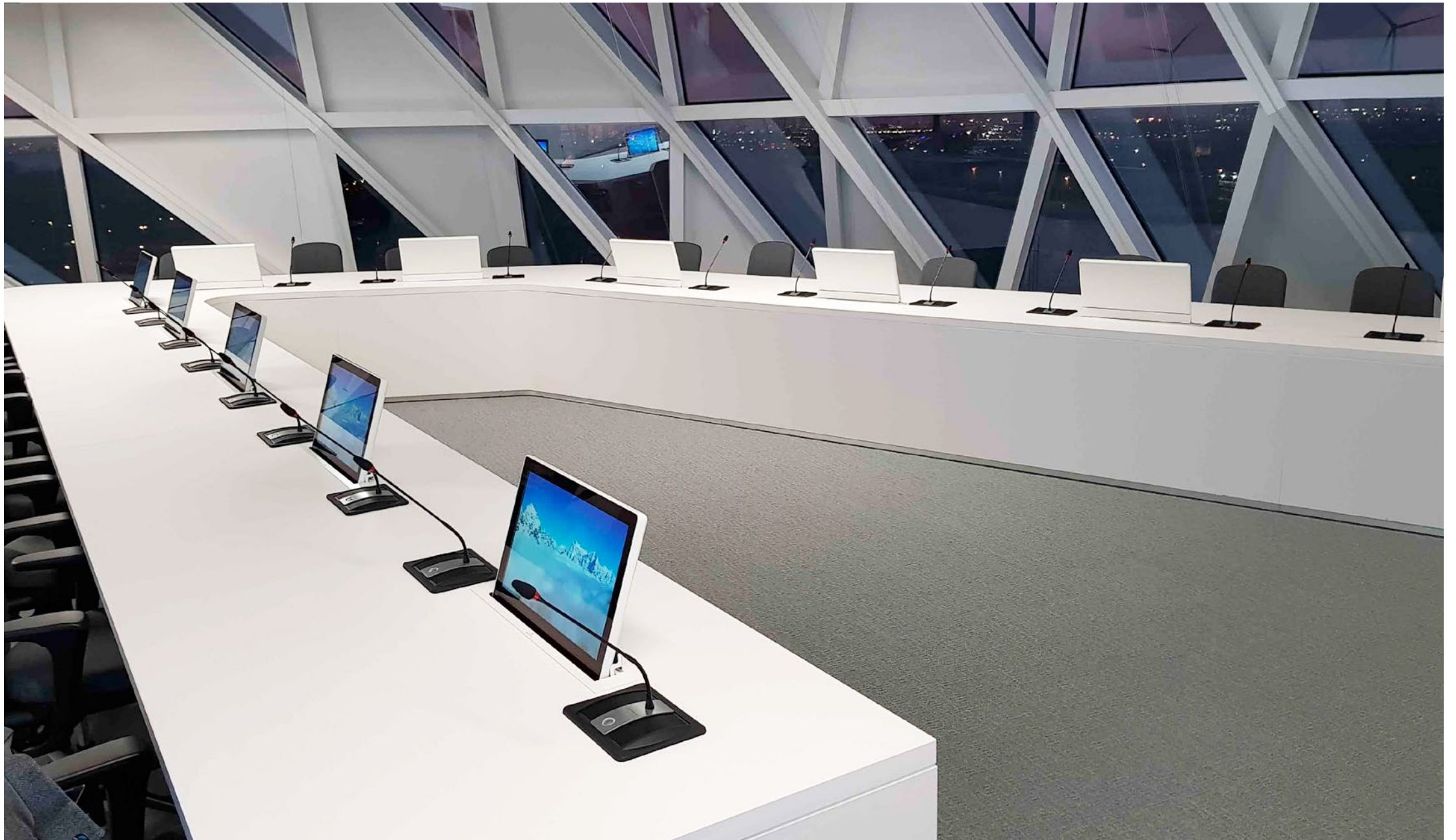
DynamicX2

DynamicX2 has a patented moving mechanism with just a single engine.

Arthur Holm's DynamicX2 is a motorised retractable product range that provides silent, reliable and harmonic movements using a patented solution with just a single engine. **DynamicX2** is equipped with a variable speed system to raise, lower and tilt 20° to ensure the best ergonomics, viewing angle and visibility. **DynamicX2** have slightly curved edges for a contemporary and longstanding look and the screen is protected with an anti-reflective 2-side coating 3 mm black edged glass.


The stainless steel cover plate can be customised with different connectors, retractable cable and fixed or monitored microphones as well as other features. An Interactive Setup Display allows the control, setup and diagnose of the monitors. Monitors provide RS-422 I/O for the remote control of movement, speed, safety settings, brightness, contrast and backlight. They are also equipped with AH-AMMC: an auto mechanical calibration movement system. The use of the **Arthur Holm's ERT** will enable the address configuration of all the monitors installed by simply pressing a button. The **AHlink** Android and IOS app allows getting the monitor's serial number without having to remove the unit from the table and can also give access to the setup and control menus.





DYNAMIC X2 UNDERCOVER

Monitors that become invisible

 RedDot Design Award

HIGHLIGHTS

- Patented automated cover plate to be veneered
- Extendable cover plate to allow the integration of additional connections and features
- Single engine for up/down and tilt movements
- Front double sided anti-reflecting 2 sides coating 3 mm black edged glass
- AH-AMMC Auto Mechanical Movement Calibration
- Wireless connectivity for setup and control
- Automatic 20° tilt angle
- Milled aluminium housing

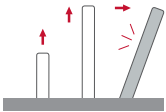


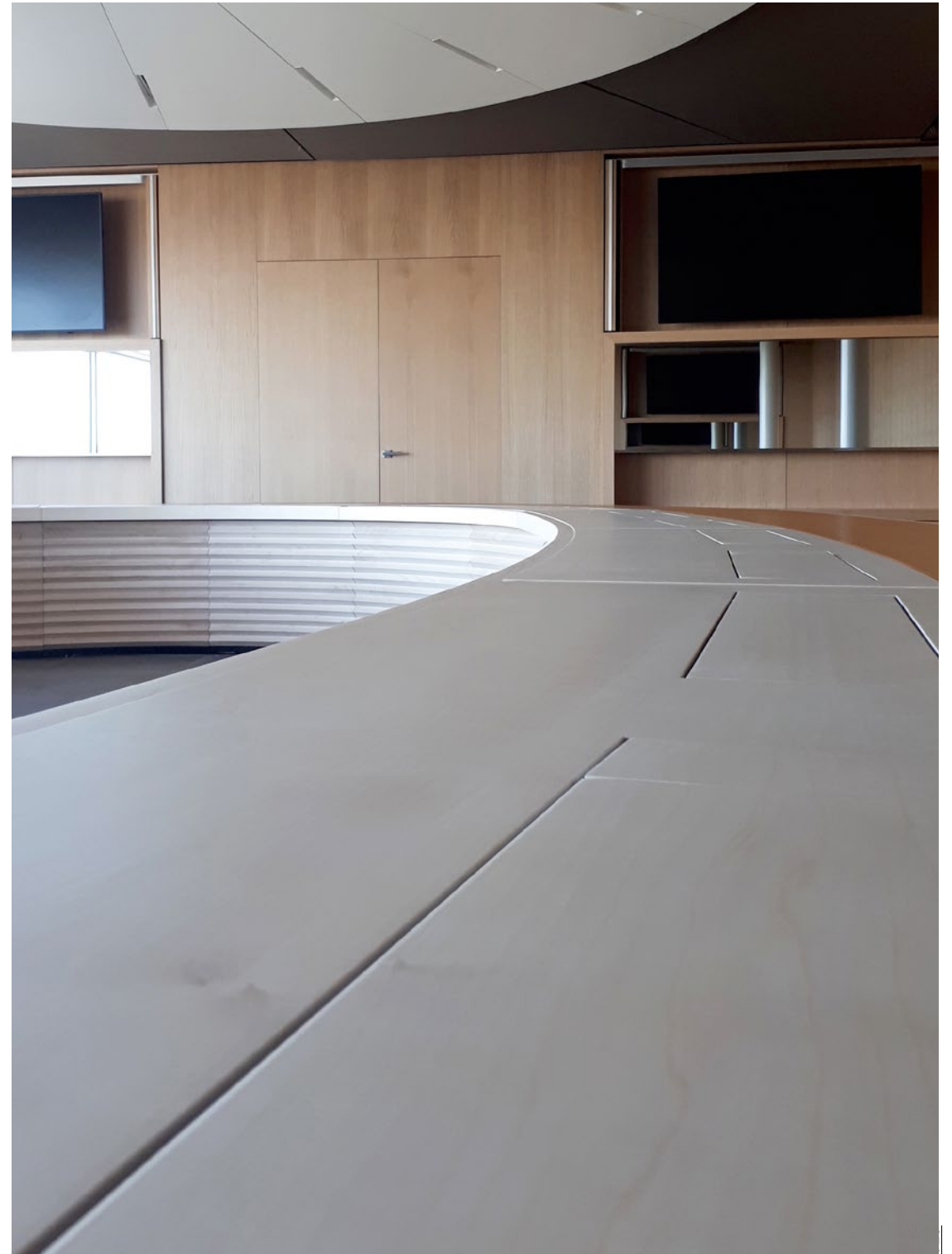
DynamicX2 UnderCover

The patented cover slides down and disappears inside the table.

Arthur Holm's **DynamicX2 UnderCover** is a retractable monitor, designed to cover conference systems and different connectors and engineered to be cleverly integrated into meeting and conference room furniture. Its exclusive and sleek design of the **DynamicX2 UnderCover** allows it to be concealed into the meeting room table, ensuring a modern, streamlined look.

This unique system combines both cutting edge technology and minimal design to seemingly disappear within the desk. When activated, an aluminium Full HD touch screen monitor will appear together with a microphone, push to talk and mute buttons, speaker, power socket, and connectors such as RJ-45, HDMI and USB. The patented cover of this solution slides comfortably downwards (into the table) and has been designed to be veneered, providing a uniform finish with the furniture. The monitor movements are remotely controllable so the product is not visible when not in use, leaving no trace on the desk surface.





DYNAMIC X2 TALK

Motorised monitor and microphone all in one

HIGHLIGHTS

- Aluminium retractable monitor with an independent microphone lift
- Automatic 20° monitor tilt angle: patented single engine for up/down and tilt
- Microphone lift compatible with 3 pin XLR 500 mm “gooseneck” microphones
- Patented 360° LED lighting ring to indicate microphone status
- AH-AMMC Auto Mechanical Movement Calibration
- Wireless connectivity for setup and control
- PA and Conference working modes
- Stainless steel cover plate

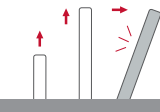


DynamicX2Talk

Extremely versatile
and adaptable
to third brand
conference solutions.

Arthur Holm DynamicX2Talk is a motorised retractable monitor that includes an independent lift for gooseneck microphones. The system provides silent, reliable and harmonic movements using a patented solution with one only engine. The variable speed system raises, lowers and tilts the monitor 20° to ensure the best ergonomics, viewing angle and visibility. The integrated independent lift system for microphones provides a rounded microphone coverlid and it not only makes the microphone disappear within the desk surface, but it also provides a pleasant light to indicate its status. Thanks to its protective and patented lighting ring, the microphones can be safely stored and protected making meeting and conference spaces more flexible and versatile.

This system has two different working modes: PA and Conference. In PA mode, a push button activates and de-activates the microphone and the LED ring will show the status by changing colour from red to green. The system will automatically silence the microphone when retracting. In Conference model, the microphone will be always active.

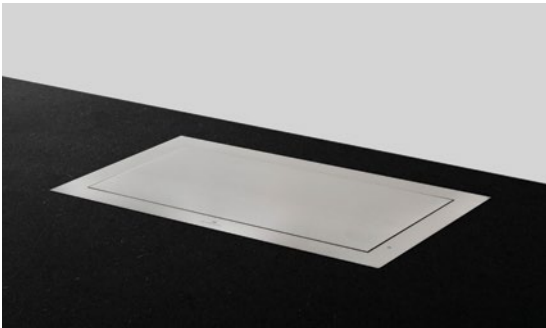


DYNAMIC X2 KM

A retractable working station

HIGHLIGHTS

- Compact, space optimising and elegant solution
- Motorised keyboard and mouse compartments
- Connectivity for wired keyboard and mouse
- Customisable cover plate
- Automatic 20° inclination
- Interactive Setup Display

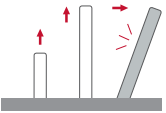


DynamicX2KM

The keyboard & mouse are lifted from storage at the same time as the monitor raises.

DynamicX2 monitor combined with an automated keyboard and mouse, creating a motorised automation system that lifts the keyboard and mouse at the same time the monitor is being raised. This combination offers the best possible quality Full HD screen with an elegant keyboard and mouse storage that converts into a work station by the touch of a button.

A safety mechanism stops the system in case of obstruction. The design is simple, with just 2 operation buttons or managed by remote control. It is intuitive and extremely easy to install. A system that offers improved table space and a neater environment.



Dynamic2: The power of classics

HIGHLIGHTS

- Single engine for up/down and tilt movements
- Milled aluminium housing, squared edges
- Energy saving design, low consumption video controller
- Serial control and remote diagnosis
- AH-AMMC Auto Mechanical Movement Calibration
- Wireless connectivity for setup and control
- Interactive Setup Display
- 2 DVI I/HDCEP compliant
- Automatic 20° tilt angle
- Individual monitor addressing

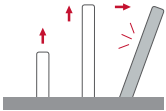


Dynamic2

This automatic tilt system provides a fast, silent and robust response.

Dynamic2 monitors offer a timeless, classic and discreet design with squared edges. **Dynamic2** models are elegant monitors built from a solid anodised aluminium block and have an extremely swift yet silent lift system. They have a vertical motorised movement with an automatic 20° tilting movement to ensure the best ergonomics, visibility and viewing angle. This automatic tilt system provides a fast, silent and robust response, offering a highly reliable and maintenance-free solution.

The stainless steel cover plate allows the customisation to add different connectors, retractable cable and fixed or monitored microphones as well as other features.





Chamaleon: A flexible and versatile monitor



HIGHLIGHTS

- No loss of work space
- Low profile monitor enclosure leaving enough space ergonomic work position
- AH-AMMC Auto Mechanical Movement Calibration
- Keyboard and mouse storage space
- 2 working positions: vertical and horizontal (with screen facing up)
- Opens, folds down and rotates 180°
- Automatic image flip
- Patented synchronised tray lift movement
- Milled aluminium housing and cover plate
- Flotating security sensor
- Wireless connectivity for setup and control



Dynamic3

An aluminium tray is activated with the opening of the screen.

Arthur Holm's Dynamic3 is a motorised product range that provides different working positions while keeping a low profile inside the working desk and a perfect integration in the furniture. The aluminium monitor housing rises and leans, has an additional 180° rotation movement, and retracts inside the work surface in 2 different positions: with the monitor oriented up or down. The movement can be stopped at 90° in order to share the display with the person located at the opposite side of the desk. The screen's lifting system automatically activates the elevation of a tray where a keyboard and mouse can be placed.

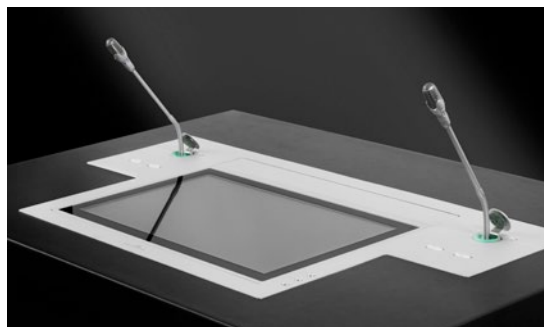




Motorised monitor and microphone all in one

HIGHLIGHTS

- Aluminium foldable and rotatable monitor with an independent microphone lift
- Opens, folds down and rotates 180°
- 2 working positions: vertical and horizontal (with screen facing up)
- Automatic image flip
- Synchronised tray lift movement
- Milled aluminium housing and cover plate
- Front double sided anti-reflecting coating 3 mm black edged glass
- Floating security sensor
- AH-AMMC Auto Mechanical Movement Calibration
- Microphone lift compatible with 3 pin XLR 500 mm “gooseneck” microphones
- Patented 360° LED lighting ring indicates microphone status
- PA and Conference working modes
- Wireless connectivity for setup and control

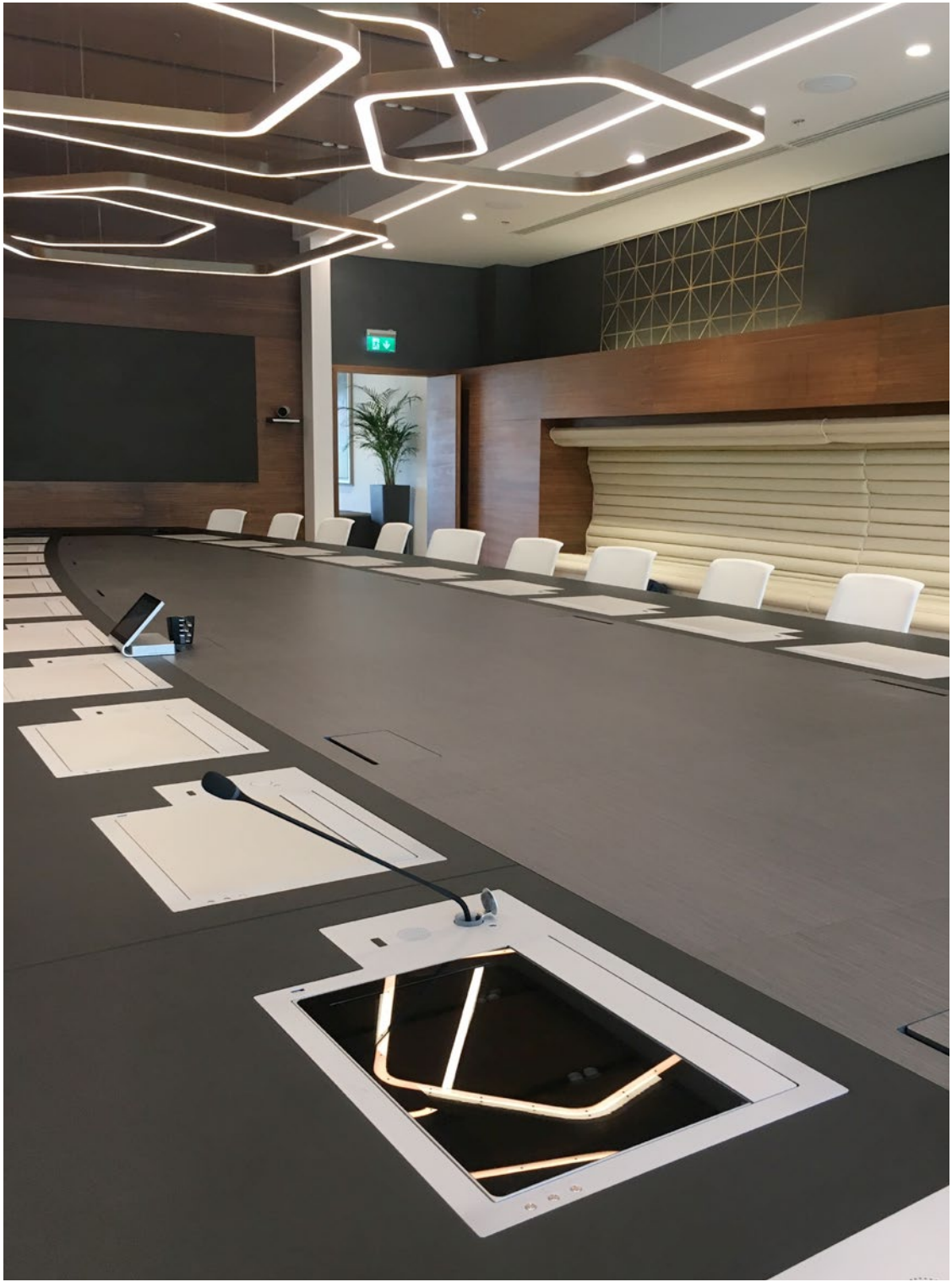


Dynamic3Talk

A Dynamic3 monitor that integrates a lift for a microphone.

Arthur Holm Dynamic3Talk is a motorised product range that provides different working positions and includes an independent lift for “gooseneck” microphones. The aluminium monitor housing rises and leans, has an additional 180° rotation movement, and retracts inside the work surface in 2 different positions: with the monitor oriented up or down. The movement can be stopped at 90° in order to share the display with the person located at the opposite side of the desk. The screen’s lifting system automatically activates the elevation of a tray where a keyboard and mouse can be placed. The integrated independent lift system for microphones provides a rounded microphone coverlid and it not only makes the microphone disappear within the desk surface, but it also provides a pleasant light to indicate its status. Thanks to its protective and patented lighting ring, the microphones can be safely stored and protected making meeting and conference spaces more flexible and versatile.





DYNAMIC3 REVERSE

Dynamic3Reverse: A view on the room

HIGHLIGHTS

- Adjustable viewing angle from 0° to 90°
- Can be folded with the screen facing down
- Position memory
- Interactive Setup Display
- Wireless connectivity for setup and control



Dynamic3Reverse

Totally unobtrusive monitor with a memorisable screen position.

Dynamic3Reverse is a unique electrically foldable 18,5" touch screen monitor with horizontal and vertical working positions. Its tilt angle can be adjusted to any point, from flush with the desk up to 90°, and it rotates to be folded. The rotation axis is located in the area that is closer to the user and the user can select the desired tilt angle, from flush on the table to almost a vertical position, ensuring a total view on the room. The monitor can rotate 180 degrees to be closed with the screen facing down and thus, totally protected.

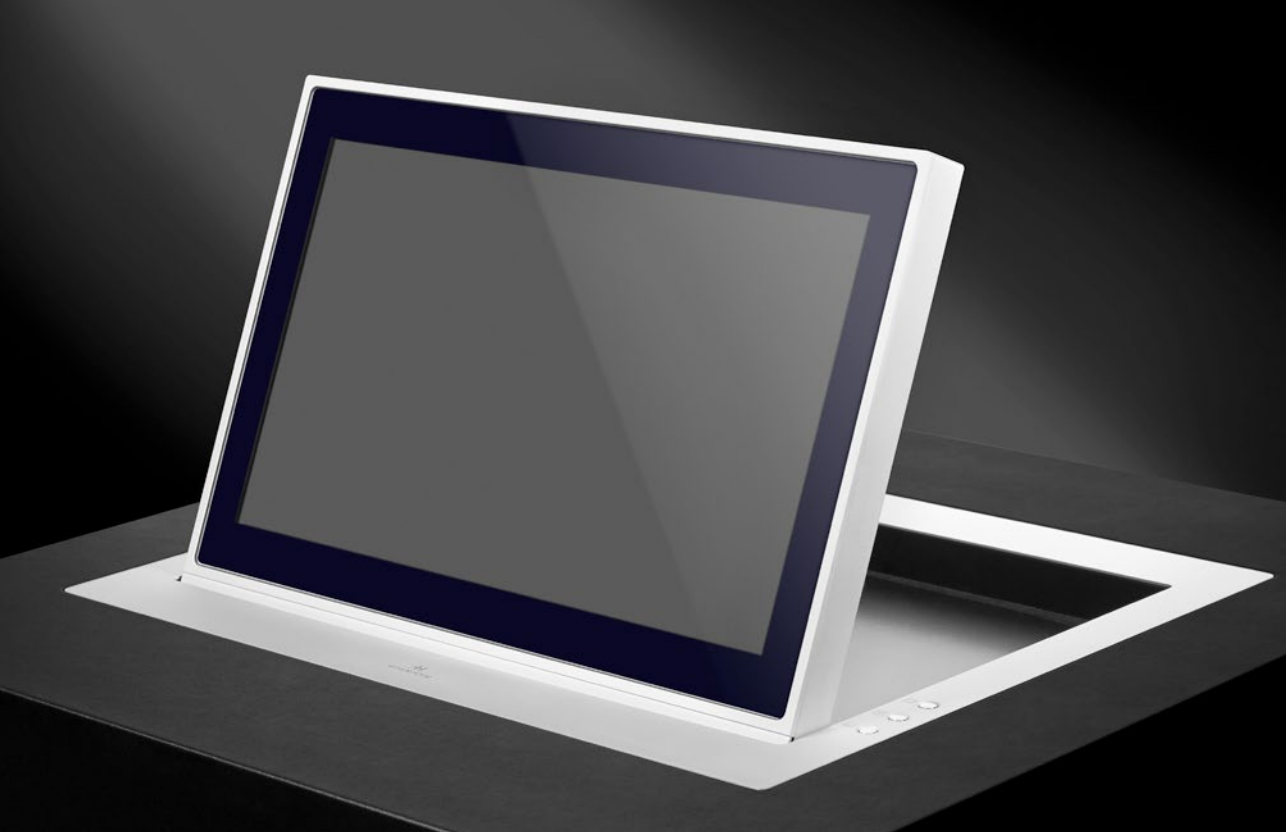
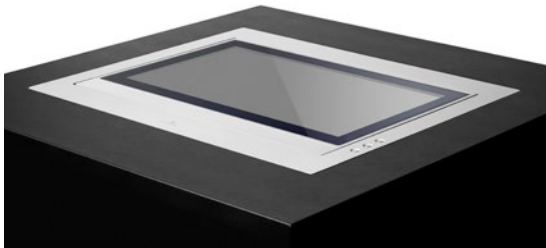
The monitor has an Interactive Setup Display which provides exclusive features for remote control and adjustments. It includes HDCP compliant DVI-I and DVI-D inputs and it is extremely compact. It is ideal for interactive meetings in conference and board rooms and can be closed both with the screen facing up or down.



A straight forward motorised, foldable monitor

HIGHLIGHTS

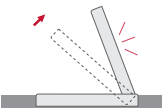
- Adjustable position
- Position memory
- Interactive Setup Display
- Maintenance free
- Energy saving design
- Safety system
- Serial control & Remote diagnostic
- Wireless connectivity for setup and control



Dynamic 1H

Flexible screen position from flush on the table to 70° of inclination.

Dynamic 1H motorised foldable monitors provide a horizontal motorised movement. The screen is always visible, it raises and leans and can be stopped at any position between 0 and 70°. A smart memory system enables both the set up and recall of the desired tilting position. Built entirely of aluminium and with a black edged anti-reflection glass, **Dynamic 1H** monitors are extremely elegant, discreet and timeless.



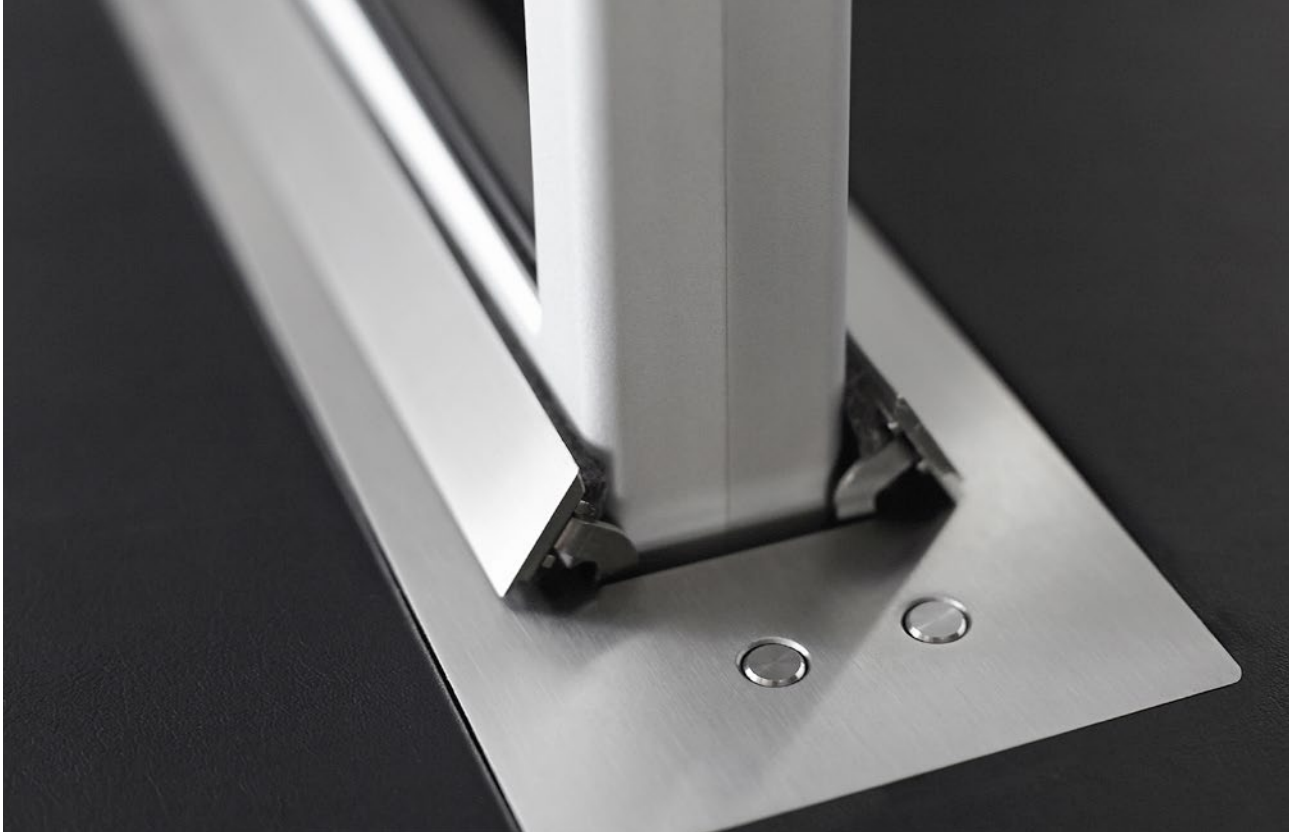


DYNAMIC1 TWIN

Two-way communication

HIGHLIGHTS

- Double sided display
- Passive cover plate
- Interactive Setup Display
- Maintenance free
- Energy saving design
- Safety system
- Serial control & Remote diagnostic
- Wireless connectivity for setup and control

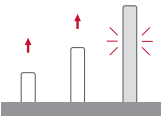


Dynamic1Twin

Dynamic1Twin has 2 monitors placed back to back in a compact anodised aluminium frame.

Dynamic1Twin is a vertically retractable monitor with a double screen. 2 monitors are placed back to back in a compact anodised aluminium frame to display different content for a 2 way communication. It is designed for reception desks, information counters or meeting and conference room tables with limited space. The screens are only visible when required, disappearing inside the table desk when not needed by simply pressing a button or by remote control.

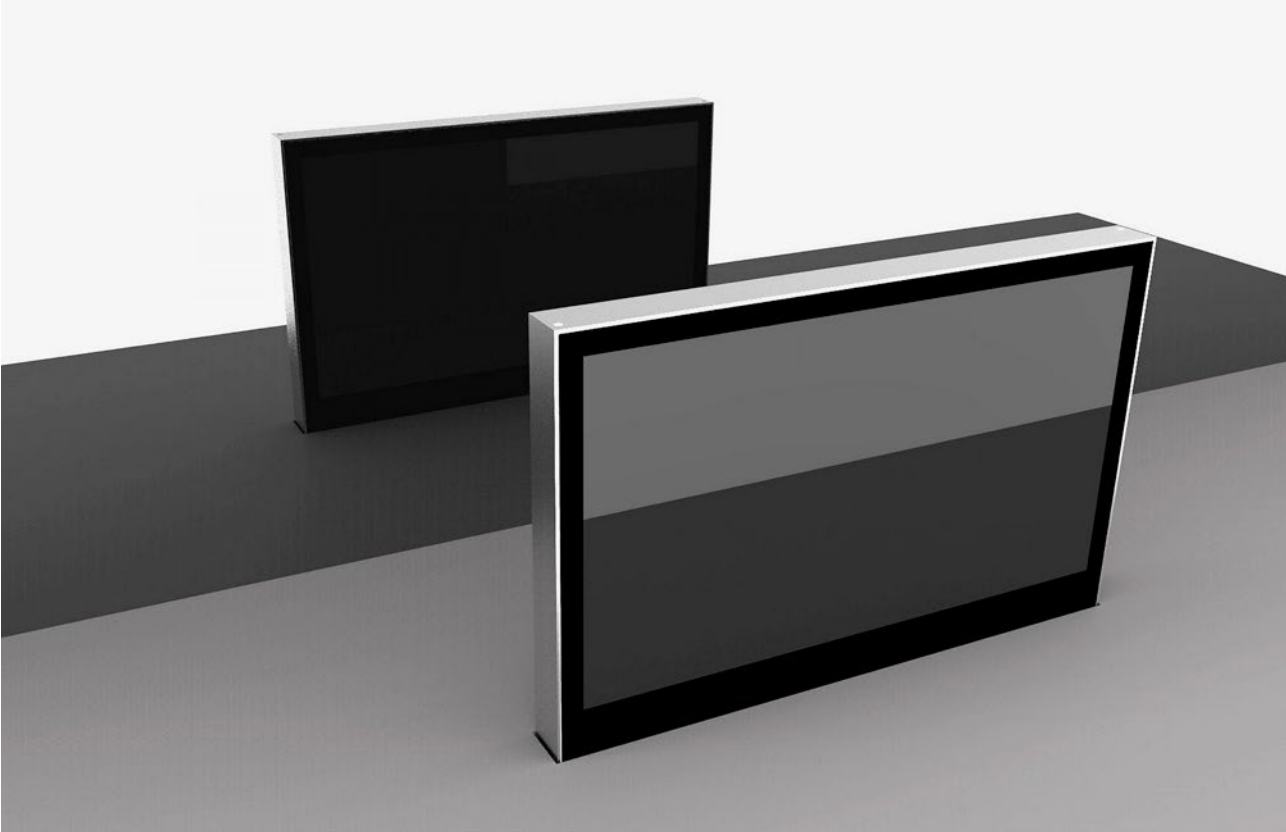
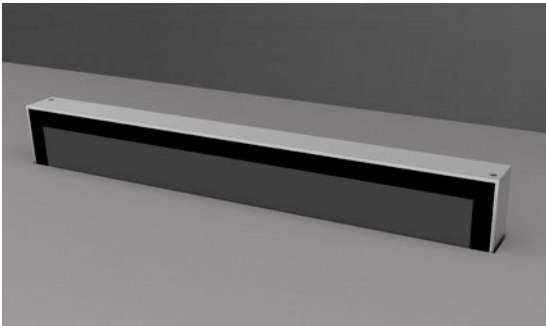
Dynamic1Twin has an extremely fast lift system with a very low noise level. Very easy to install, these monitors require no maintenance. To protect the user, these monitors are equipped with a safety system which stops the movements in case of resistance detection. They are remotely controllable and diagnosable through the ERT interfaces in an very easy and cost effective way.



The monitor for invisible two-way communication

HIGHLIGHTS

- Double sided display
- No cover plate
- Ready for veneering
- Capacitive sensor
- Interactive Setup Display
- Maintenance free
- Energy saving design
- Wireless connectivity for setup and control

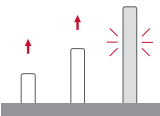


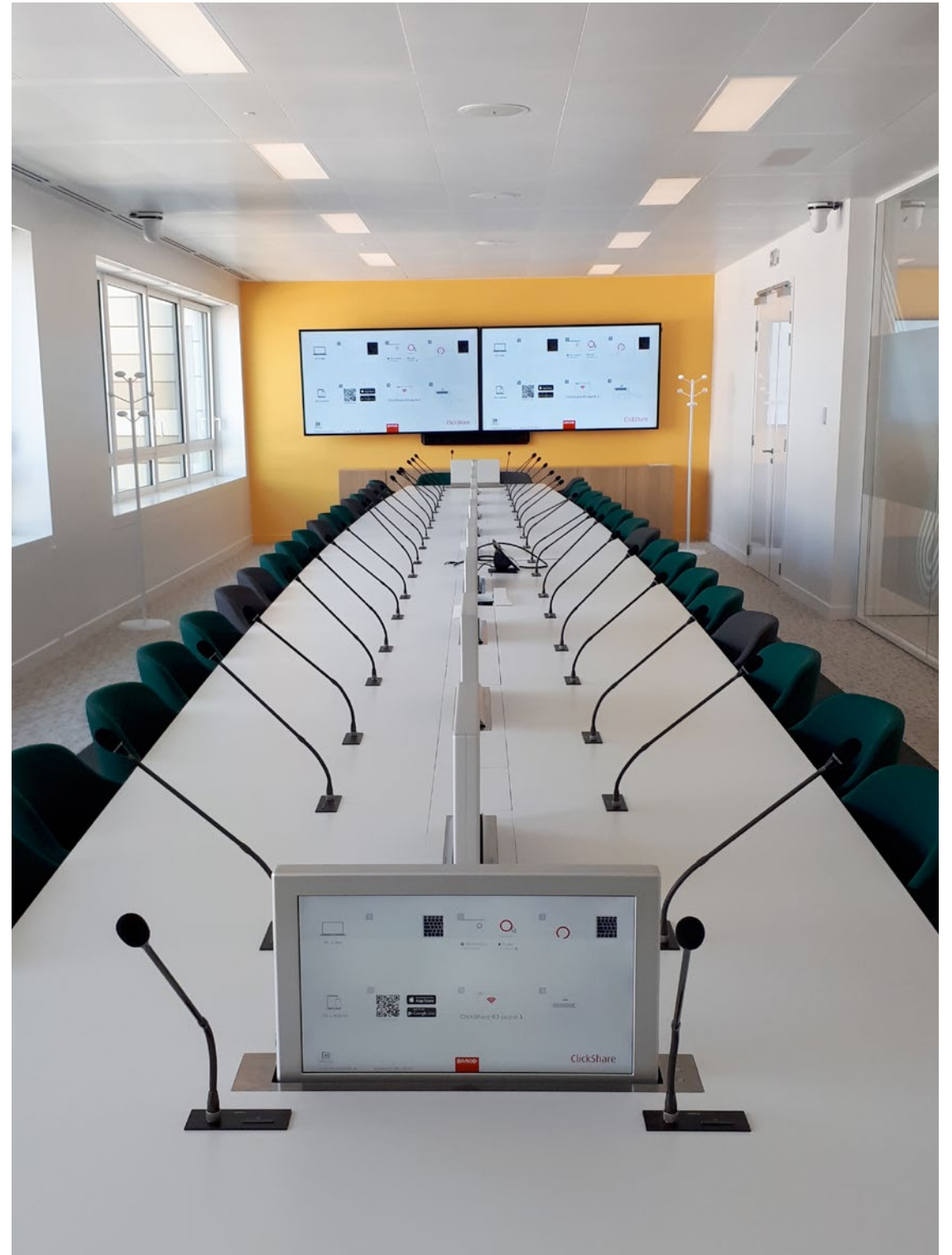
DB1Twin

Two monitors are placed back to back in a compact anodised aluminium frame designed to be veneered.

DB1Twin is a vertically retractable monitor with double screen, specially designed to be veneered. Two monitors are placed back to back in a compact anodised aluminium frame displaying different contents for a 2 way communication. It is designed for reception desks, information counters or meeting and conference room tables with limited space. The screens are only visible when required, disappearing inside the table desk when not needed by simply pressing a button or by remote control.

DB1Twin has an extremely fast lift system with a very low noise level. Very easy to install, these monitors require no maintenance. To protect the user, **DB1Twin** are equipped with a safety system which stops the movements in case of resistance detection. They are remotely controllable and diagnosable through the **ERT** interfaces in an very easy and cost effective way.



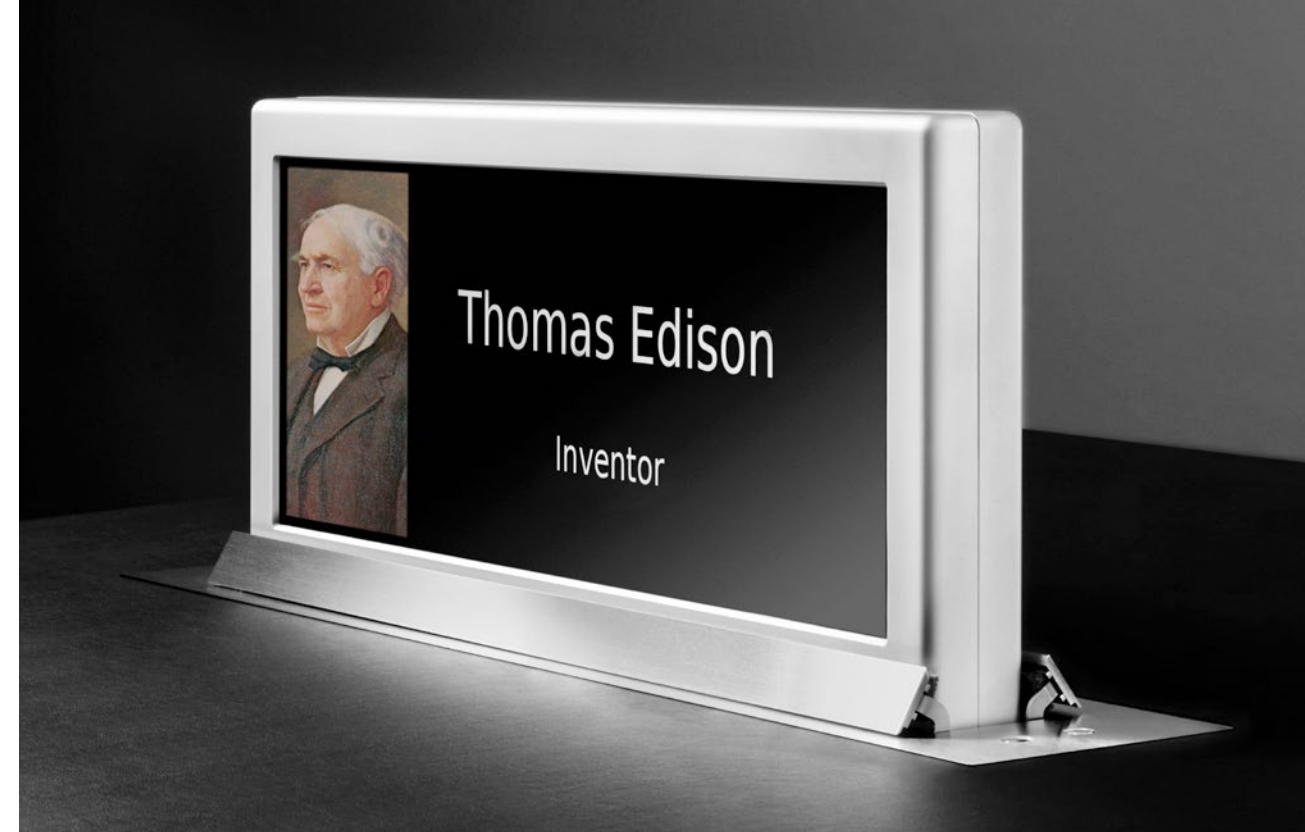
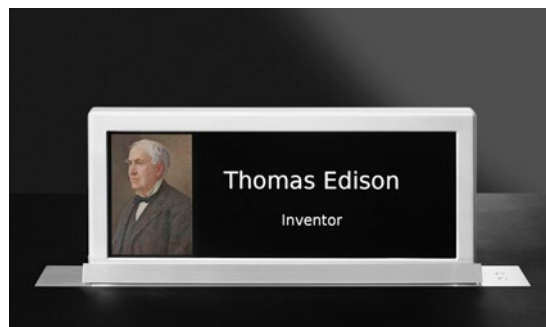


DYNAMIC SIGNATURE DISPLAY

Identifying the user

HIGHLIGHTS

- Half widescreen double sided motorised monitor
- Internal embedded computer
- Software provided
- Interactive Setup Display
- Maintenance free
- Energy saving design
- Serial control & Remote diagnostic
- Wireless connectivity for setup and control

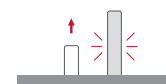


DynamicSignatureDisplay

Double sided
retractable digital
labelling monitor
for displaying
digital content.

DynamicSignatureDisplay is a retractable digital labelling monitor for auditoriums, meeting and conference rooms, institutions and public communication spaces. The product consists of a vertically motorised retractable double side stretched screen and a Linux based software which allows a simple display of a picture and a name (or any digital content) in full colour. Two screens are placed back to back in a compact, anodised aluminium frame, displaying different information on each one. The side facing the audience will display the picture and name of the conference participant, and the information in the other side allows the attendee to identify the seat. The system is ideal for name tagging applications over a single CAT-5 cable per screen.

DynamicSignatureDisplay is equipped with a Linux based player, with TCP/IP interface for control, configuration and content upload and management.

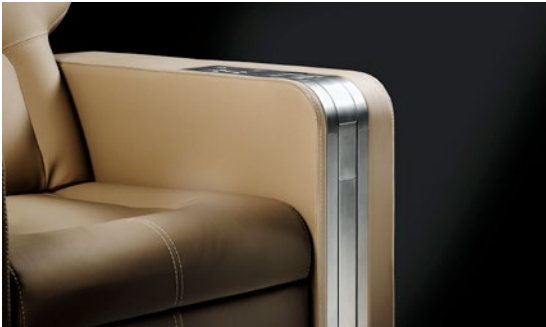


DYNAMIC CHAIR DISPLAY

DynamicChairDisplay: Business class

HIGHLIGHTS

- Adapts to multiple armrests
- Motorised adjustable angle
- Maintenance free
- Energy saving design
- Safety system
- Serial control & Remote diagnostic
- Wireless connectivity for setup and control

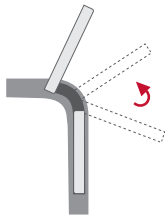


DynamicChairDisplay

A motorised monitor to be integrated in chair armrests, is only visible when it's in use.

DynamicChairDisplay is a retractable motorised monitor to be integrated in chair armrests. The monitor is only visible when it is in use and it is safely stored in the armrest when not needed.

This elegant aluminium screen possess an automatic vertical extraction movement plus an additional manual rotation towards the user followed by a motorised tilt adjustment. The monitor housing is made of milled aluminium with anodised finish. Its mechanism is robust and silent and the whole solution is integrated in a compact block, being very simple to install.



DYNAMIC RECEPTION MONITOR

You never get a second chance to make a first impression

HIGHLIGHTS

- Ergonomic
- Motorised adjustable height
- Adjustable viewing angle (horizontally and vertically)
- 140 degrees rotation
- Exquisite materials
- 24/7 Design



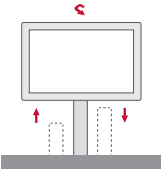
Dynamic ReceptionMonitor

The elegant monitor housing is made of milled aluminium and stainless steel.

Motorised adjustable reception monitor for a perfect fit. Quick motorised adjustment to match each individual needs when working to create a correct and preferable work environment at the front desk.

The professional **Arthur Holm DynamicReceptionMonitor** incorporates the latest professional technologies to ensure a perfect workplace. It offers a non-obstructive design in which all technical interfaces and cables are internal, so the front desk is free of cables and obstructive components, creating a cleaner work environment.

The **DynamicReceptionMonitor** has been designed to be integrated in tables or desks. The base of the monitor is installed on the surface and its connectivity is placed below the table, making the installation clean and minimalistic. The elegant monitor housing is made of milled aluminium and stainless steel and it includes an antiglare protection glass with black marking. The stainless steel rotary arm of the monitor offers a motorised adjustable height for a perfect fit.







MANUAL MONITORS 1.2

First impressions are an essential part of human interaction that translates into office environments and this is especially true in reception and lobby areas as well as in information counters, check-in desks, business centers and in meeting and in conference rooms. **Arthur Holm** understands that technology should be an important element of any office – allowing visitors to get positive feelings as they enter the room. The importance of selecting a stylish monitor for these areas cannot be underestimated since it will be one of the most visible elements of the space.

Monitors should be well designed from all angles, provide a cable management system and help with space optimisation. We propose a wide range of manual monitors, to be placed on desks, integrated in these and to be manually folded back or forward.

AH1: Don't touch the table

HIGHLIGHTS

- Milled aluminium with a cast iron base
- Manually foldable
- Totally adjustable position
- No need to modify desk surface
- USB pass through
- Maintenance free
- Energy saving design

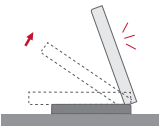


AH1

A manually foldable aluminium monitor for desktops, which doesn't require structural changes to the table surface.

AH1 is a manually foldable aluminium monitor for desktops with anodised finish and a dark cast iron base. It includes an anti-glare protection glass with a stylish black frame.

Tired of monitors that become too intrusive? **AH1** desktop monitor is the ideal solution for auditoriums, tele presence, training rooms, meeting and conference rooms and information counters. With a height that can be easily adjusted, they do not require structural changes on the table surface.





AH2: Forward folding

HIGHLIGHTS

- Manually foldable from 0° to 110°
- Totally adjustable position
- Ready for desk mounting
- Auto-power off
- Easy to integrate
- Maintenance free
- Energy saving design

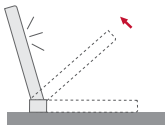


AH2

AH2 can be folded on the table surface with the screen facing down.

AH2 manually foldable monitors are the perfect solution to create flexible and versatile tables needing to optimise the available space. They are elegant displays that enhance participation, creativity and co-working in dedicated areas and they can be easily folded down to leave a direct line of sight to the other participants or events taking place in the room. Furthermore, the low profile space needed for their installation allows users to have a large cable-free surface to work using both the screen and other materials over the desk.

With a discreet and classic design **AH2** monitors turn technology into an appealing cutting edge system which is able to perform at the highest standard while generating a memorable user experience.





Gooseneck: Clean off the desk

HIGHLIGHTS

- Adjustable viewing angle
- Table integration monitor
- Rotatable 160°
- Below table connectivity
- No visible cabling
- Maintenance free
- Energy saving design



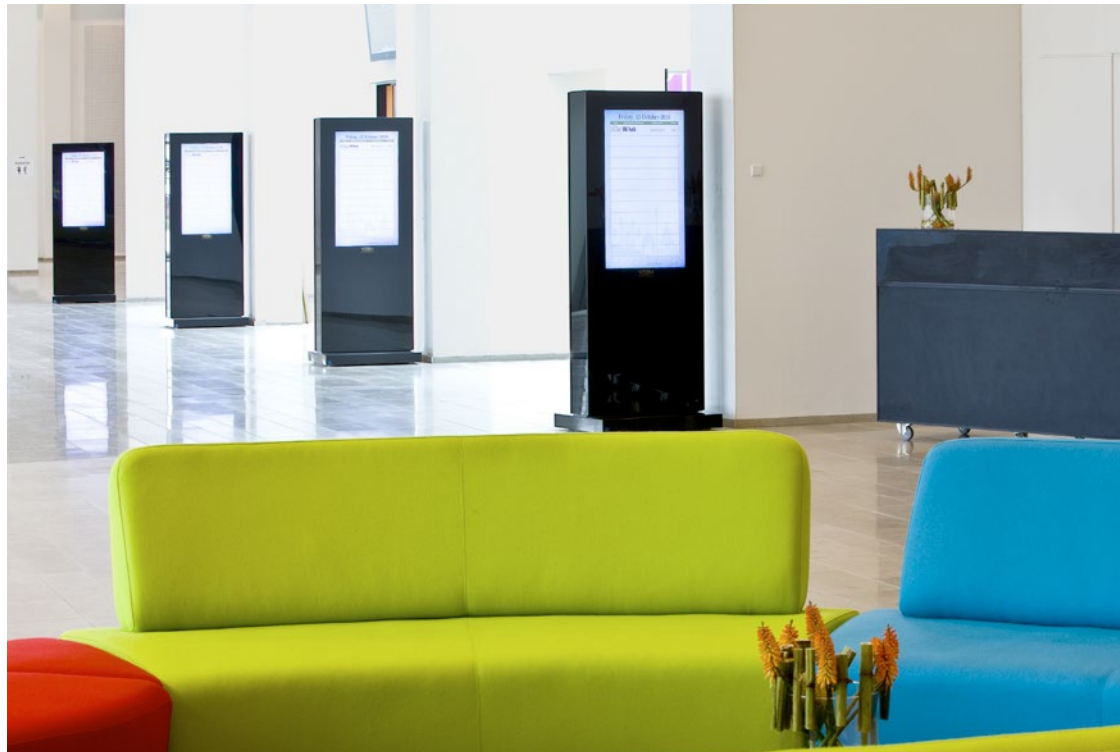
Gooseneck

A monitor designed to be installed on counters or desks.

Gooseneck monitors have been designed to be installed on counters or desks. These monitors have a brushed stainless steel support base assembled to the table. Very elegant screens designed for fixed installation on tables are made from milled aluminium with a stylish, protective glass panel. The cables are neatly concealed inside the support and under the table to reach the connection point.







WALL MONITORS

In-wall, on-wall, built into the furniture or even mounted on a foot stand, **Rise** and **Drop** monitors offer a wide range of sizes and finishes of aluminium, stainless steel or glass. They can be personalised by adding different features and the logo of the customers. They have been designed with a professional approach and provide all the accessories for a quick, straight forward and secure installation.

Integrating monitors in or on the wall is a convenient space optimising solution specially conceived to enhance the user experience. When installed in reception and public areas inside hotels, office and commercial buildings, museums and visitor or business centres, they become a part of a friendly eye-catching space providing positive feelings to visitors. Wall mount monitors can be discreetly installed on the wall and deliver convenient information, as well as personalised welcome messages or corporate presentations.

Wall monitors are also ideal to offer relevant meetings information when placed outside a conference or purpose-built room, a place where they will undoubtedly catch the eye of the public. They can show details about the session taking place inside, being extremely helpful and engaging for attendees to know schedules, programmes or other general information of interest. Wall Mount Monitors become an entertaining feature standing out in these spaces while acting as an interactive communication display for users.

The monitor for on-wall digital information

HIGHLIGHTS

- On- wall installation
- Brushed stainless steel/ Aluminium/ Glass front frame (depending on the model)
- Integrated wall mount
- Security anti-theft locking system • Maintenance free
- Easy to install
- Energy saving design



Rise

Rise monitors are designed to be wall mounted to provide an interactive display for users.

Rise monitors are also ideal to offer relevant meetings information when placed outside a conference or purpose- built room, a place where they will undoubtedly catch the eye of the public. They can show details about the session taking place inside, being extremely helpful and engaging for attendees to know schedules, programmes or other general information of interest. Rise monitors become an entertaining feature standing out in these spaces while acting as an interactive communication display for users.

The displays are robust and resistant, all set for the busy areas where they are installed. These monitors serve users with advanced technology ready to play in a very own and useful way, adding a distinctive smart touch to their time in a particular building or meeting and working up an awesome experience to remember.





The monitor for in-wall digital information

HIGHLIGHTS

- In- wall installation
- Brushed stainless steel/ Aluminium/ Glass front frame (depending on the model)
- Galvanised in-wall mounting box
- Clip on front system
- Maintenance free
- Easy to install
- Energy saving design



Drop

Drop monitors are designed for an easy wall integration and are available in a variety of finishes.

Drop monitors have been designed for an easy in-wall installation. They are supplied with a separate box for fix mounting, while the screen itself provides a “clip-on front” system. **Drop** monitors are available with glass, brushed stainless steel and aluminium frames and provide multiple options and customisations. All models are provided with a galvanised mounting box and are available in a variety of sizes.





MONITORS

1



PODIUMS

1.3

Interactive solutions improve the user engagement and experience, no matter what environment – from a reception in a company, a wayfinding directory to lecterns and speaker podiums.

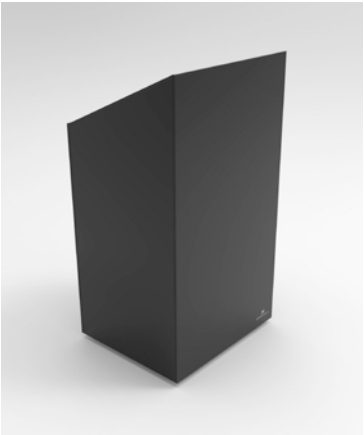
The design should be attractive, convenient, robust and versatile. It should be prepared to accommodate computers, microphones and other peripheral for different communication and presentation purposes.

Podiums should also include wheels to be moved easily and an internal cable management system. A sober and streamlined look will ensure the fusion with any interior design.

Present and move

HIGHLIGHTS

- Interactive professional monitor
- Touch screen
- Piano black glass finish
- Seamless 45° miter construction
- Security glass
- Hidden lockable wheel system
- Easy to move



AHPylon

AHPylon is made of glass with a seamless 45° miter construction.

The **AHPylon** with integrated AV interface serve as a speaker podium or an interactive information podium.

The podium can be configured to match each individual's needs. Its design permits an easy displacement of the podium and the hidden lock system prevents from unwanted movements and unauthorized access to the internal components of the pylon. The hidden wheels create an elegant and unobstructive design while making the podium always mobile.

MOTORISED & MANUAL SOLUTIONS FOR MICROPHONES

2.1



Let's think about a boardroom or an auditorium. Certainly there is a need to provide optimal acoustics, so that the audience or the meeting attendees can hear perfectly. The use of gooseneck microphones is the right solution since they are adjustable through a flexible shaft, allowing the microphone to be positioned in the best possible perspective for sound. The use of gooseneck microphones is standard in meeting spaces, boardrooms, speaker podiums and conference rooms around the world. Gooseneck microphones allow users to move the microphone closer to their mouth, resulting in a clear and transparent audio pickup.

But what happens when flexibility and space optimisation are a must? Perhaps there is not a permanent need for microphones, maybe there is an spontaneous small committee meeting where audio reinforcement is not needed.

Think about a system that allows users to choose the availability of a gooseneck microphone. The microphone will only appear when needed and will disappear inside the desk by the touch of a button. Imagine also that this system provides a central element to ensure the correct position of the microphone and its automatic retraction and think of this central element as a translucent ring that can be lit up in different colours to identify the speaker.

Talk and impress the audience

HIGHLIGHTS

- Universal lift system for gooseneck XLR 3 pin microphones
- Stainless steel cover plate with 3 buttons
- Patented 360° LED lighting ring to indicate microphone status
- AH-AMMC Auto Mechanical Movement Calibration
- PA and Conference working modes
- Wireless connectivity for setup and control

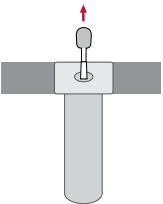


DynamicTalk

A 360° LED ring light protects the microphones and indicates the audio status.

DynamicTalk is an elegant retractable system for gooseneck microphones with exclusive features. It not only makes the microphone disappear within the desk surface but it also provides a pleasant light to indicate its status. Thanks to its protective and patented lighting ring, the microphones can be safely stored and protected making meeting and conference spaces more flexible and versatile.

DynamicTalk provides two different working modes: PA and Conference. When in PA mode, a push button placed on the stainless steel cover plate allows to activate or de-activate the microphone and the LED ring will indicate the status by changing colour from red to green. This microphone lifting system automatically silences the microphone when retracting whereas in conference mode the microphone remains active and can be controlled via GPI and GPO.

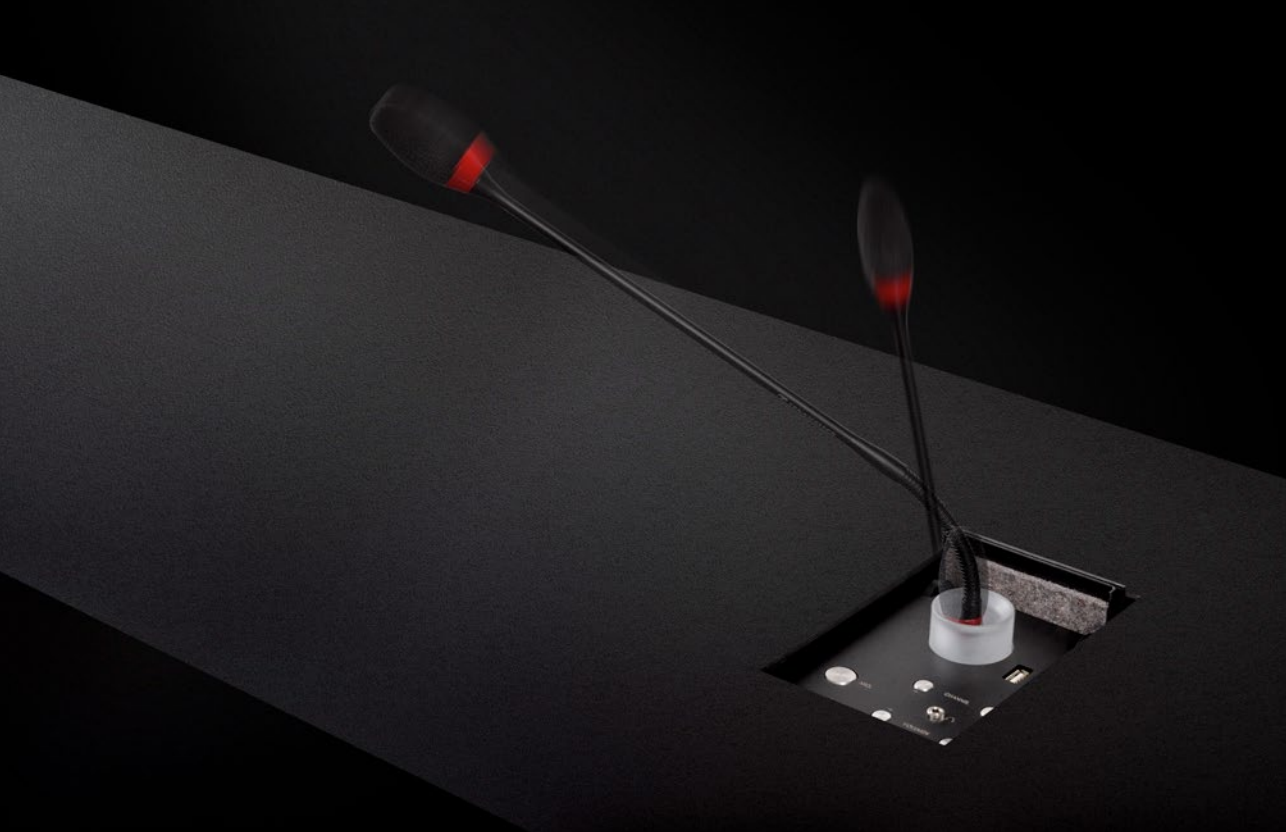
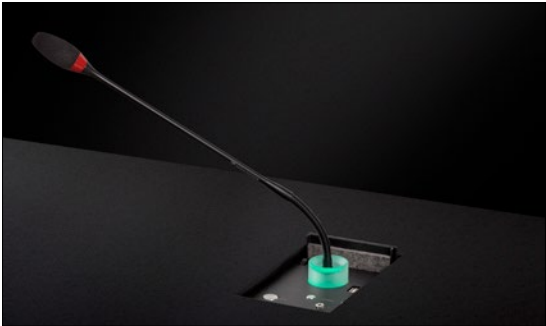


DYNAMIC TALK UNDERCOVER

DynamicTalk UnderCover: Discrete speech

HIGHLIGHTS

- Patented automated cover plate for veneering
- Universal lift system for gooseneck XLR 3 pin microphones
- 360° LED lighting ring to indicate microphone status
- PA and Conference working modes
- AH-AMMC Auto Mechanical Movement Calibration
- Wireless connectivity for setup and control



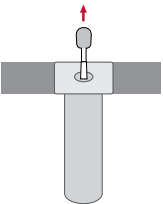
DynamicTalk UnderCover

DynamicTalk UnderCover has a patented cover that slides down and disappears inside the table.

DynamicTalk UnderCover is an elegant retractable system for gooseneck microphones with exclusive features. It allows an easy veneering to provide a seamless integration in the furniture. It not only makes the microphone disappear within the desk surface but it also provides a pleasant light to indicate its status. Thanks to its protective and patented lighting ring, the microphones can be safely stored and protected making meeting and conference spaces more flexible and versatile.

DynamicTalk UnderCover provides two different working modes: PA and Conference. When in PA mode, a push button allows to activate or de-activate the microphone and the LED ring will indicate the status by changing colour from red to green. The system will automatically silence the microphone when retracting. When in Conference mode, the microphone will be always active and can be remotely controlled via GPI and GPO.

This microphone lifting system automatically silences the microphone when retracting whereas in conference mode the microphone remains active.





DYNAMIC TALK H

DynamicTalkH: On your lap

HIGHLIGHTS

- Adapts to 40 cm length microphones
- Low space required underneath the table
- Dynamic LED to indicate microphone's status

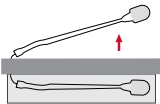


DynamicTalkH

DynamicTalkH's horizontal system optimises the space below the table.

DynamicTalkH allows the microphone to be bended while returning automatically to its original horizontal position.

DynamicTalkH is a horizontal lift for gooseneck microphones. The system has been especially developed to optimise the space below the table. It ensures comfort and space enough for legs. Silent, remotely controllable and elegant, **DynamicTalkH** is reliable and simple to install. Veneering is also available to match surface finish of the table. This system allows the microphone to be bended while returning automatically to its original horizontal position. **DynamicTalkH** not only conceals cleverly the microphone within the desk, but it also provides an interior light that goes from red to green to indicate its status. Microphones are stored safely, improving the flexibility of meeting and conference spaces, as tables can be used for different purposes. **DynamicTalkH** has 2 different working modes (PA and Conference) and can be remotely controlled and diagnosed through the **AHnet** protocol (RS-422).

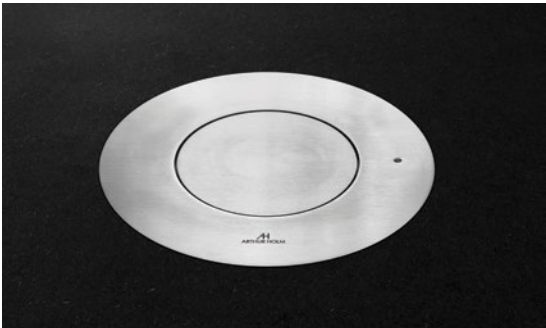


DYNAMIC TALK B

DynamicTalkB: Coworking with style

HIGHLIGHTS

- Motorised lift for boundary microphone
- Touch control sensor on cover plate
- Wireless interface set-up through AHLINK app
- Compact, space optimising and stylish solution
- Silent, elegant and durable system
- Ethernet control and remote diagnosis
- Easy installation and maintenance free
- PoE



DynamicTalkB

DynamicTalkB has a motorised lift for boundary microphones.

Motorised microphone lift for boundary microphones and similar, controllable through network or directly on the device using the flush mounted touch control sensor. Integrated wireless set-up and diagnosis.

The **Arthur Holm DynamicTalkB** microphone lift is designed to hide boundary microphones when not in use with a smooth, elegant and silent movement.

The microphone lift is capable of providing commands for automatic mute of the microphone (depending on the model and maker of the microphone) when moving and in storage position. The microphone lift is powered using PoE making it easy and compact to install and control. The housing is made out of steel and the upper cover plate is made in stainless steel.

MicConnect: Connect and go

HIGHLIGHTS

- Easy to install
- Maintenance free
- No Power required
- Universal XLR-3Pin connection
- Push Button and LED controlled by third party conference system



MicConnect

Arthur Holm's elegant passive shock mount for microphones.

Arthur Holm's MicConnect is a static surface mount for XLR microphones with integrated shock mount, push to talk button and microphone status LED. The microphone is very easy to connect and disconnect. A special tool (included with the product) is necessary to remove the microphone. When there is no microphone connected the XLR connector is covered by a lid integrated in the system.

MicConnect is made of stainless steel and standard and customised finishes are also available.



MOTORISED SPEAKERS



A radically innovative approach

Meeting rooms are where ideas are born, a sanctuary of creativity and the place where important decisions are taken. If a spoken dialog or if the sound of a presentation is unintelligible, much of the communication is lost. In a meeting and conference room, there is the need to spread the sound over the length of long tables. Furthermore, there is also the need that these tables are aesthetically pleasant and versatile. The next challenge is that boardroom tables often place people several meters apart, making it difficult to carry a conversation.

DynamicSpeaker is an ingenious, elegant and space optimising solution. It comprises a motorized loudspeaker for desk integration: a compact, omnidirectional 360 degrees Class-D active speaker, two-way coaxial driver, with integrated DSP technology.

DynamicSpeaker improves the meeting room acoustics with proximity sound, improves speech intelligibility and helps optimising the table space.

DYNAMIC SPEAKER

DynamicSpeaker: To be heard and admired

HIGHLIGHTS

- Natural sound direction
- Speech intelligibility
- High gain before feedback
- Close proximity to user
- Limited audio pollution
- 360 degrees loudspeaker
- 4" 2-Way coaxial speaker, bass reflex
- 2 x 36W class-D bi-amplifier integrated
- Acoustic omnidirectional diffuser
- DSP integrated Balanced line input
- RS-422 controllable
- Near field audio reproduction
- Speech intelligibility enhancement
- Matching surface, ready for veneer
- Remotely controllable
- Wooden speaker enclosure



DynamicSpeaker

DynamicSpeaker
the elegant,
discreet solution
that brings quality
audio to the
meeting room.

Our new motorised loudspeaker for desk and furniture integration brings flexibility and impressive audio quality with enhanced speech intelligibility to the meeting room or other rooms where quality audio is needed in a magical movement.

The compact, omnidirectional 360 degrees active speaker has a twin 36W Class-D integrated amplifiers and a two-way coaxial transducer that brings the audio to the dedicated area with its acoustic diffuser through its integrated DSP technology, the system can be controlled using the AHnet and its wireless **AHlink** App for control and set-up. The **Arthur Holm DynamicSpeaker** is designed to be hidden when not in use with a smooth magical and elegant movement done without disturbing the audience.





CAMERA SOLUTIONS

More businesses than ever are employing video conferencing systems to interface with their co-workers, clients and vendors and recent research revealed that 86% of companies surveyed plan to use video conferencing as part of their unified communications environment. It is important that the videoconference camera is not only well located in the room but that it gets concealed with the interior design and that can be covered when is not in operation.

DynamicVision provides the ideal solution to conceal video conference cameras and controls, improving the interior design of the conference room with its easily adaptable front enclosure that can be covered with various materials. The pre-installation frame is the perfect solution for coordination between system integrators and architects or constructors. **DynamicVision** can be delivered separately to be easily installed on the wall with detailed instructions for cabling and connections.

The camera is activated via RS-422, infrared or contact closer interface when needed. It is neatly stored away when not required, both protecting the camera and securing the work environment. The front enclosure moves vertically to display the camera while moving the camera forward simultaneously.

DynamicVision is the perfect solution for systems integrators, architects, interior designers and space planners.

DynamicVision: Privacy please

HIGHLIGHTS

- Compatible with the most popular video conference cameras on the market
- RS-422 and Infrared controllable
- Customisable cover
- Maintenance free
- Easy to install



DynamicVision

The camera can be neatly stored away when not in use.

Technology is by your side and should be visible only when needed! **DynamicVision** provides the ideal solution to conceal video conference cameras and controls, improving the interior design of the conference room with its easily adaptable front enclosure that can be covered with various materials.

The camera is activated via RS-422, infrared or contact closer interface when needed. When not required, it's neatly stored away, both protecting the camera and securing the work environment. The front enclosure moves vertically to display the camera while moving the camera forward simultaneously. **DynamicVision** is the perfect solution for systems integrators, architects, interior designers and space planners.

COURTESY BOXES 2.4



During a meeting, clients and employees will want to focus on the task at hand and, therefore, it is important to include some extra amenities that prevent the need to leave the room. Keeping doors open is an easy way for the topics of the meeting to be overheard.

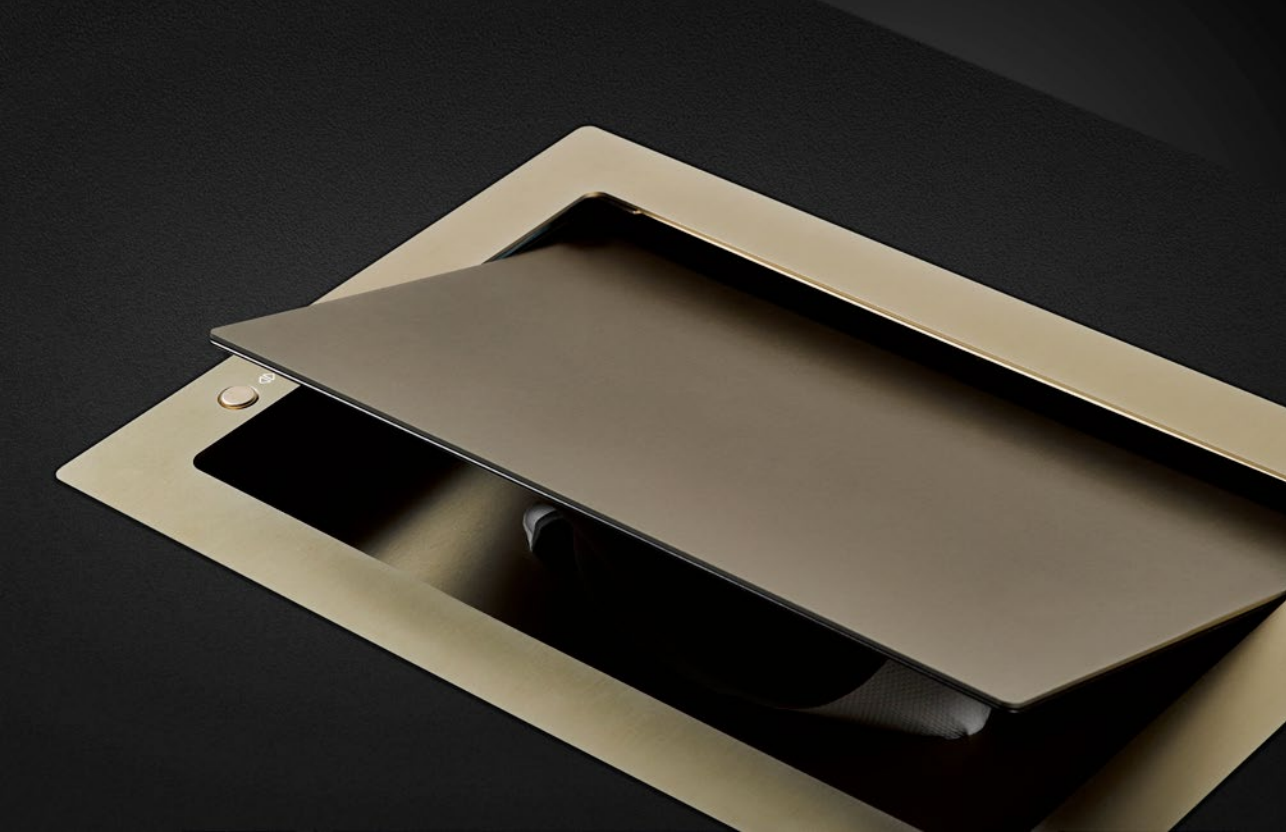
Arthur Holm offers flexible motorised opening solutions that allows to have water bottles, glasses and tissues that will not only go a long way for productivity, time management and privacy but also to create a welcoming and comfortable work environment.

COURTESY BOX

CourtesyBox: Be nice to your guests

HIGHLIGHTS

- Motorised housing to keep any object
- Can be veneered
- Maintenance free
- Personalised finish
- Control buttons on cover plate
- Easy installation
- Compact, space optimising and elegant solution
- Silent, reliable and durable solution
- Serial control and remote diagnosis



CourtesyBox

The CourtesyBox can hide anything in the tables keeping the surface free.

The **CourtesyBox** is an outstanding motorised solution to hide anything in the tables, keeping the surface clean. Expect the unexpected with the **CourtesyBox** for water and glasses or as a tissue box. The CourtesyBox can be controlled locally or remotely through R422 and the open/close button can be disabled or locked. The **CourtesyBox** can also be daisy chained with all the rest of **Arthur Holm** motorised products using CAT6 cables for control. The Courtesy Box is created to be installed in horizontal surfaces of furniture. When the hatch is closed, it leaves the desk free of any obtrusive elements.







CABLE CUBBY SOLUTIONS

Arthur Holm cable cubby solutions have been designed to blend discreetly with the furniture. Providing a manual or a motorised opening, they can be easily veneered for a seamless integration in the desk surface combining connectivity, power and control.

We have designed a product line for the system integrators, table manufactures and designers who want to go one step further for the perfection of integration with an actual and lifelong design that fullfils all the technical aspects for modern and future connectivity and controls. Some of the main features offered by our cable cubby solutions are:

- Motorised or manual
- Multi configurable connections
- Customised finishing
- Adaptable connectivity
- Designed for veneer and table matching
- Flush integration
- Straight forward underneath installation
- Factory colour option

DYNAMIC CABLE RETRACT

DynamicCableRetract: Connect and surprise

HIGHLIGHTS

- Motorised cable retraction solution
- HDMI and USB-C cables
- Minimalistic design
- Designed to be discreet
- Capacitive sensor to deploy and retract the cable
- Ready to veneer



DynamicCableRetract

DynamicCable
Retract integrates
seamlessly into
furniture.

Simply touch a button and a 60 cm cable will appear in a smooth and silent move. Push to deploy and push to retract: extremely easy and neat.

The patented **DynamicCableRetract** is compact, elegant and robust. It provides a harmonic and silent motorised movement for a seamless integration in furniture.

Motorised connection

HIGHLIGHTS

- Motorised solution for AV connectivity and power
- Designed to be discreet
- Ready to veneer
- Custom versions and finishes
- Safety system



DynamicConnect

DynamicConnect provides cable management and creates a neater table environment.

DynamicConnect is a motorised retractable connection box that can be customised with different connectors. The ergonomic angle of the product enhances confort and usability. The design is simple, including a capacitive sensor for the opening and close. It is intuitive and easy to use and to install and integrates a safety mechanism stops the system in case of obstruction. Its ergonomic design enhances comfort and usability.

DynamicConnect offers cable management, improved table space and a neater environment. It offers many finish and AV connectivity options and it can be veneered to match the surface of the table perfectly.

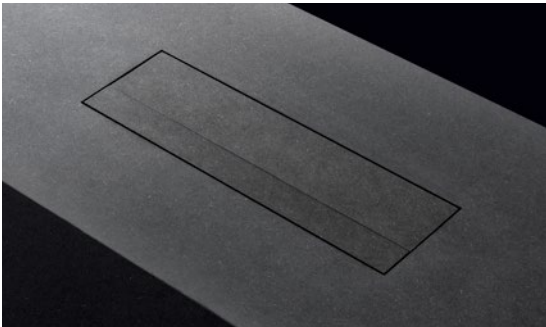


CONNECTION BOX

Connection box: *Elegant and invisible*

HIGHLIGHTS

- Manual solution for AV connectivity and power
- Designed to be discreet
- Two lid opening system
- Synchronised damped controlled movement
- Ready to veneer
- Custom versions and finishes



Connection box

The user simply pushes the split-in-two lid to open it.

Arthur Holm's connection box is a manual opening connectivity solution that allows users to connect their devices in a discreet and streamlined way.

The user simply pushes the lid that opens in two parts. The passive lid and the active lid are joined together making a synchronised damped controlled movement with the option of veneer. The unit has been designed to blend perfectly into the furniture's design.

SIGNAL SELECTION DISTRIBUTION, SHARE, CONTROL & DIAGNOSE



Experienced AV integrators help ensure that technologies are integrated to maximise efficiency and user productivity. This allows not only get a higher return on investment, but integrators can help ensure that projects run smoothly from the start and provide an efficient service and maintenance. We believe that a manufacturer should offer extended support to system integrators by providing a selection of robotics, conveyor equipment, easy controls and solutions-based technologies. This is why we have developed a wide range of products and tools to help system integration to be straightforward and remotely controllable and diagnosable.

ERT-30 ERT-60

ERT-30 & ERT-60: All under control

HIGHLIGHTS

- OTAS (One Touch Addressing System)
- IP to RS422/RS485 interface
- ERT-60 2 AHnet inputs (RS-422) / ERT-30 1 AHnet input
- Controls up to 60 units (ERT-60)
- RDM system (Remote Diagnostic and Maintenance)
- Remote/local control and management
- Wireless control through AHlink app



ERT-30 & ERT-60

The ERT interfaces provide control, set up and diagnose all in one!

The **ERT** interfaces provide an easy and convenient system to control and diagnose motorised monitors, microphone lifts and other automated solutions by **Arthur Holm** helping to reduce the installation costs in terms of both equipments and time. Easy to install and set-up, they facilitate a quicker installation and eliminate the need of external relay boxes and extra power outlets. It is also possible to have **Arthur Holm’s** virtual support on site as long as there is an Internet connection available.

The **AHlink** wireless control is also integrated in the **ERT** interfaces, providing an easy and direct access to the most common settings through an app and making the start-up and future interventions hassle free. This means there is no need to access physically the unit to set-up or diagnose its installation.

DYNAMIC SHARE

Real time sharing with the maximum quality and security

HIGHLIGHTS

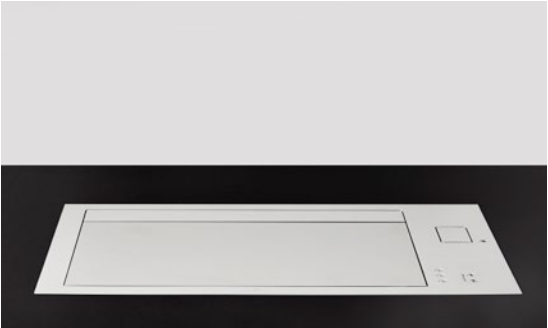
- Plug and play solution
- Software free
- High security
- No video compression (no latency)
- 3/ HDMI Inputs, 1/HDMI Output
- Dedicated ports for Loop In and Loop Out
- HDCP compliant
- Ethernet external control
- Digital audio Output
- Easy cabling and installation
- Allows the daisy chain of up to 20 devices (Full HD)



DynamicShare

A secure, straightforward and integrated collaboration solution.

DynamicShare is a smart solution that allows meeting room participants to share different video sources among each other with an optimal video quality (zero frame latency) and it doesn't require a specific training, technical knowledge or assistance. It is a software free share system that provides quick and seamless connectivity with a high level of security. The meeting or conference table can stand alone, without the inconvenience of either messy cabling or having to integrate external devices.





DYNAMIC LOOP

Daisy chain connection

HIGHLIGHTS

- HDMI distribution
- Easy cabling
- Allows the daisy chain of up to 20 devices (Full HD)
- Short installation time



DynamicLoop

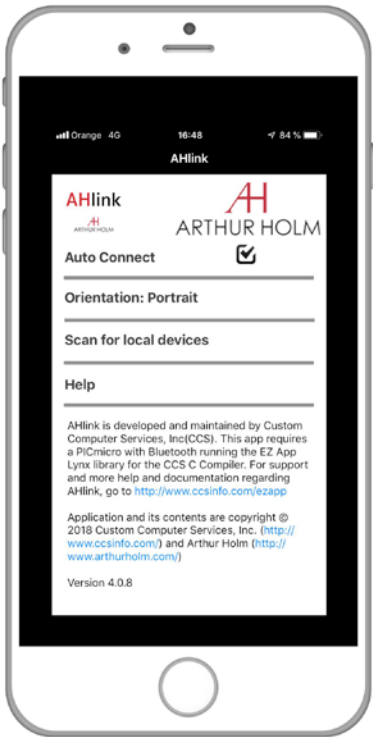
DynamicLoop allows getting as many outputs as needed in combination with a distributor.

The **DynamicLoop** system can manage the distribution of a video signal and allows to daisy chain the monitors in a loop using HDMI cables. **DynamicLoop** can be integrated in **Dynamic2**, **DynamicX2** and **DB2** monitors (and it is also available as a stand-alone device). This board is integrated internally in the monitors, so no additional power supplies are needed. A maximum of 20 units can be daisy chained at Full HD resolution with a maximum of 40 meters of cable in total. The **DynamicLoop** can also be combined with a distributor, to get as many outputs as required, and this assists to optimise the cabling and the installation time in large projects.

The app that makes the system integrator’s job easy

HIGHLIGHTS

- Wireless connection free app
- Allows configuration and setup
- Easy to use
- Advanced features for system integrators



AHlink

AHlink turns your mobile device into a tool to setup and configure your meeting room!

Take your smart conference room a step further with **AHlink**! It will be easily optimised, helping to configure accurately every aspect of your workspace. **AHlink** provides the freedom of mobile and allows reducing extra work hours and costs to concentrate in the really important matter: creating an inspiring space where ideas flow and productivity takes off. With **AHlink** the whole system can be managed through a wireless connection, so there is no need to open or dismantle the table to reach physically the mechanical and electronic systems of the unit when setting-up or diagnosing its installation.

AHlink is a wireless control system giving an easy and direct access to the most common settings through a free app and making the start-up and future interventions hassle free for the user.

AHlink app can be downloaded for free on iOS and Android devices. It allows the user to configure basic parameters when installing **Arthur Holm** motorised products and it also offers extra advanced features to make the job of after sales technicians and authorised installers much easier and quicker.



THE ART OF CUSTOMISATION

We offer a very wide product range and if we don't have the product that your customer requests, we put our team of mechanical, design and electronic engineers at your disposal, with more than 25 years of experience. Don't hesitate to ask! We will work hand by hand with you to make sure that we fulfil your expectations. **Arthur Holm's** products can be 100 % personalised according to each customer needs. The products are prepared to integrate different options of functionalities as well as different finishes. Just contact us and we will be happy to help!

Our goal is to innovate in designs that integrate seamlessly into the furniture, that move silently and in harmony as if they were dancing to the beat of an inspiring melody. Safe, beautiful and easy-to-use designs that allow users to concentrate on the contents to achieve the objectives of the meeting without distractions, without frights, with the best image and the best sound quality, with an impressive design and with the security to be using the best materials.

We are specialists in converting the spark of an idea into a product; a magical transformation to which each and every one of us contributes: sales people, engineers, designers and factory operators. We work side by side and restlessly until we find the desired solution. Pure alchemy.

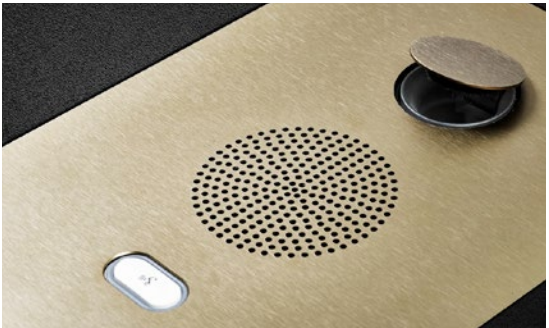
A professional approach

Non-stop innovation

It is in the DNA of **Arthur Holm** to always chose the best materials to design it's product range. From the LCD panel, to the aluminium used for the construction of the enclosures and the electronics, we believe that professional users need professional-grade monitors and solutions. It is true that consumer LCD panels are thinner, but there are many other differences between the industrial ones. The same can also be said about the electronics and even about the quality of the housings.

Initial and long-term cost

Cost is a big part of a purchase decision and consumer LCD panels are dramatically cheaper (and thinner) than the industrial ones. But, in our field of application, the cost should take into consideration the factor of time. If the goal is to manufacture a monitor that can have a life as durable as the furniture itself, we should always use industrial displays.



Lifetime

The lifetime of an industrial panel never goes below 20,000 hours. Some of them provide a life of 70,000 hours so we are talking about a huge difference. The first thing we need to consider is what manufacturers mean by "lifespan". This doesn't mean that after a certain amount of use, the monitor will just stop working. What they're talking about is brightness. The generally accepted method for measuring lifespan is the number of hours of use until a monitor is half as bright as it was when new. We call this 'half brightness'. Bearing in mind that these monitors are going to be installed in rooms where critical decisions are going to be made, it is crucial to have the best screen visibility for as long as possible. Imagine a crisis room where the monitors must work 24/7.

With an industrial panel, we could use the monitors at their maximum brightness for a period of 8 years compared to 2 years with a consumer panel.

It is also crucial to take into account several factors that will shorten this estimate, that occur in the real world. In a perfect world, backlights would maintain their brightness during the time indicated by their manufacturer. However, environmental conditions can shorten the life of an LED backlight. These include: excessive current, excessive heat, movement and vibrations. Remember that we manufacture motorized monitors, so the use of an industrial panel is highly recommended.



Warranty, compatibility and spare parts availability

Consumer displays are warranted just for that: consumer use. And if you are looking for a display to be used professionally, warranty is something to take into consideration. Not only the warranty terms but also the spare parts availability on the market. Industrial panels and components are available for years, ensuring the long life of the product itself. 05B50167-C5EF-4861-B98D-0084F2E8B99E.png



Electronic features and extras

The electronics of professional products should be specifically designed to suit the product's application. Let's say that we have a conference room that is used with different lighting conditions. Curtains might be opened allowing natural light to come in, whereas on other occasions we would prefer a much darker environment. Wouldn't it be useful if we could regulate the brightness of the monitor via the control panel? Providing RS-422 and IP control to parameters of brightness, contrast and backlight will definitely help the versatility of the room. Other features like remote setup and diagnose will ensure that all is prepared when needed.

Having different inputs, HDCP compliance and the possibility to have a video output to facilitate video distribution, would also be a great help. Professional displays are not only designed to handle a wide range of resolutions but also to help with the installation, service and maintenance. They provide features that have been specially designed for the AV professional such as accessing the setup diagnose and control features without having to remove the displays from the table.

Acleda Bank, *Cambodia*
ACS, *Spain*
ADAC, *Germany*
ADNOC HQ, *UAE*
Adobe, *USA*
Aena, *Spain*
AG2R, *France*
Air Lingus, *Ireland*
Banca CR Asti, *Italy*
Banca d’Alba, *Italy*
Banca Valdichiana, *Italy*
Banco de España
Banco do Brasil
Banco Portugues
de Inversion, *Portugal*
Banco Santander, *Spain*
Bankia, *Spain*
Banque du Golf, *Algeria*
BBVA, *Spain*
BCEE, *Luxembourg*
BGFI, *Gabon*
BNP, *France*
Board of Grievances, *KSA*
Bouygues, *France*
BPH Billiton, *Chile*
Business Center Emerald
Quarter, *Kazakhstan*
CA Paris, *France*
Caixabank, *Spain*
Caja Popular Mexicana,
Mexico
Caja Viva, *Spain*
Casais Town House,
Portugal
Catlin, *Singapore*
CENACE, *Mexico*
Central Directorate of State
Airports, *Turkey*
CHEIL-SAMSUNG
Cite Judiciaire, *Luxembourg*
CMA, *France*
Commercial Bank Qatar
Congress of Deputies,
Mexico
Conseil de la Marne, *France*
Conseil IDF, *France*
Continental, *Romania*

Cour de cassation, *Moroco*
Court des Comptes,
Luxembourg
COVIRAN, *Spain*
CPAM, *France*
Credit Agricole, *France*
Credit Suisse, *UK*
Crown Prince Court, *UAE*
Deloitte, *Belgique*
Deloitte, *Chile*
Diriyah Authority, *KSA*
Dubai Court, *UAE*
Dubai Customs, *UAE*
EFSA, *Italy*
ENAGAS, *Spain*
ENAP, *Chile*
ENOC, *UAE*
Epicenter Company, *Ukraine*
Equate HQ, *Kuwait*
European Comission, *Belgium*
European Justice Court,
Luxembourg
European Parliament,
Belgium
European Parliament,
Luxembourg
Federal Court, *UAE*
FIBA, *Switzerland*
Fleury, *Brasil*
Fondazipne Banche del
Monte di Lombardia, *Italy*
Forensic Research Service,
Ukraine
Foundation of the First
President of the Republic
of Kazakhstan
Futbol Club Barcelona,
Spain
Gas Natural, *Spain*
Gazprom, *Russia*
Grimaldi, *Monaco*
Groupe Afnor, *France*
Groupe Casino, *France*
Groupe Limagrain, *France*
HACA, *Morocco*
Henry Ford museum, *USA*
Heracles, *Spain*

Hewlett Packard, *USA*
Holland & Knight, *USA*
Home Depot, *USA*
Hotel Kempinski, *UAE*
Hungarian Competition
Authority, *Hungary*
Iberdrola, *Spain*
IESE, *Spain*
Interjet, *Mexico*
IPIC, *United Arab Emirates*
IRD, *France*
Irish Courts, *Ireland*
Jahra & Frawaniya Court
Complex, *Kuwait*
Jeddah Municipality, *KSA*
Jeronimo Martins, *Portugal*
JETEX, *UAE*
Jumeirah Emirates Tower,
UAE
KFSHRC, *KSA*
King Abdulaziz University,
KSA
King Faisal University, *KSA*
Klesia, *France*
KPNC, *Kuwait*
KUFPEC, *Kuwait*
Kuveyt Turk Bank, *Turkey*
Kuwait Council of Ministers,
Kuwait National Assembly
Kuwait National Bank
Kuwait University
Linea Directa, *Spain*
LMH, *France*
Magyar Telekom, *Hungary*
MAJLIS, *Oman*
Mapfre, *Spain*
Masdar, *UAE*
MASEN, *Morocco*
McDonalds, *USA*
MEPHI Institute Tashkent,
Uzbekistan
Metlife, *France*
MGEN, *France*
Ministere De L’Agriculture,
Morocco
Ministère de la Défense,
France

Ministère des finances,
Moroco
Ministerio del Interior, *Spain*
Ministry of Agrarian Policy,
Ukraine
Ministry of Defence, *Germany*
Ministry of External Affairs,
Qatar
Ministry of Health, *KSA*
Ministry of Interior, *Angola*
Ministry of Interiors, *Italy*
Ministry of Internal Affairs,
Kazakhstan
Ministry of Justice, *Qatar*
Ministry of Labour, *UAE*
Mistry of Justice, *Azerbaijan*
Mitsubishi, *USA*
Mobile World Center, *Spain*
MODON, *KSA*
MOE, *UAE*
MOI, *KSA*
MOMRA, *KSA*
Mutua Loreto, *Spain*
Mutua Madrileña, *Spain*
Najran University, *KSA*
National Anti-Corruption
Bureau, *Kazakhstan*
National Bank of Qatar
National Security
Committee Taldykorgan,
Kazakhstan
NATO HQ, *Belgium*
Naturgy, *Spain*
NCA, *KSA*
Nestlé, *Brasil*
Nippon Toyota, *India*
NIS Gazprom, *Serbia*
NPCC, *UAE*
The Rivne Nuclear Power
Plant, *Ukraine*
Office of the Prime Minister
Republic of Kazakhstan
Oran Palace, *Algeria*
Ordre des Masseurs
Kinesitherapethics, *France*
OVH, *France*
PAAET, *Kuwait*

Palais des Congres de
Monaco, *Monaco*
Parex Bank, *Latvia*
Parliament of Jordan
Peugeot, *France*
Piraeus Bank, *Greece*
Pirelli, *Italy*
Porsche, *Germany*
Presidential Palace, *UAE*
Qatar Foundation, *Qatar*
Qatar Gas, *Qatar*
Qatar Olympic Committee
Qatar Petroleum, *Qatar*
Real Madrid, *Spain*
Repsol, *Spain*
Royal Court, *Oman*
RTA, *UAE*
SACYR, *Spain*
Saipem, *Italy*
Sanofi, *France*
SASO, *KSA*
Saudi Energy Efficiency
Center, *KSA*
Saudi Irrigation
Organisation, *KSA*
SBI, *India*
SEAT, *Spain*
Senate, *France*
Senate, *Mexico*
Seoul Guartantee
Insurance Company,
South Korea
Servired, *Spain*
Situational Center,
Kazakhstan
SMA BTP, *France*
Sochi Olympic Games,
Russia
State Security Service
Republic of Kazakhstan
Steel House, *Denmark*
Suez Canal, *Egypt*
T.C.Rekabet Kurumu
Toplantı Salonari, *Turkey*
Tasweeq, *Qatar*
Telefonica, *Spain*
Thales Group, *France*

The Emergency Committee
in Almaty, *Kazakhstan*
Tivoli Hotel, *Denmark*
TKI, *Turkey*
Turkish Petroleum, *Turkey*
U-Park, *China*
United Arab Bank, *UAE*
Universidad de Granada,
Spain
Université de Strasbourg
Uría Menéndez, *Spain*
V2 Development, *Greece*
VAV, *Gremany*
Veolia, *France*
Wakeup Copenhagen Hotel,
Denmark
World Economic Forum,
Switzerland
World Trade Centre, *Iraq*
World Trade Organization,
Switzerland

AWARDS & PATENTS

AWARDS

- 1 Delta Selection
- 2 AV Finalist
- 1 Trophées Nominé
- 4 InAvation Finalist
- 6 AVTechnology Best of Show
- 2 rave – Best of Infocom
- 2 i-NOVO nomine
- 1 NewBay Media Best of Show
- 1 NeoCon Gold
- 1 rave – Best of ISE
- 1 Installation ISE Best of Show
- 1 German Design Award Gold
- 2 InAvation Winner
- 2 redden Award Winner

PATENTS

- | | |
|------------|-------------|
| P24821DEEP | MU17180ES00 |
| P24821ESEP | MU17301ES00 |
| P24821GBEP | MU17322ES00 |
| P24821USPC | MU17413ES00 |
| P27178DEEP | MU17445ES00 |
| P27178ESEP | MU17854ES00 |
| P27178ITEP | MU17868DEPC |
| P27178RUPC | MU17868RUPC |
| P27178USPC | |
| P27284DEEP | |
| P27284EPPC | |
| P27284GBEP | |
| P27284RUPC | |
| P27284USPC | |
| P27715ESEP | |
| P28089DEEP | |
| P28089ESEP | |
| P28089ITEP | |
| P28089USPC | |
| P31160ESES | |
| P31160PCES | |



