

Panasonic

BUSINESS



Professional **DISPLAYS**

Line-up Catalog June 2021



Worldwide
Olympic Partner



Worldwide
Paralympic Partner



Panasonic Professional Displays Lineup

High Brightness

SQ1H Series

1200cd/m²
*TH-75SQ1H: 1500 cd/m²

NEW
86"
TH-86SQ1H

NEW
75"
TH-75SQ1H



*Actual resolution : 3840 x 2160p

SQ1 Series

500cd/m²

98"
TH-98SQ1

86"
TH-86SQ1

75"
TH-75SQ1

65"
TH-65SQ1

55"
TH-55SQ1

49"
TH-49SQ1



*Actual resolution : 3840 x 2160p

SQE1 Series

500cd/m²

Released in the second quarter of 2021
98"
TH-98SQE1

86"
TH-86SQE1

75"
TH-75SQE1

65"
TH-65SQE1

55"
TH-55SQE1

49"
TH-49SQE1

43"
TH-43SQE1



*Actual resolution : 3840 x 2160p

CQE1 Series

400cd/m²
*TH-98CQE1: 500 cd/m²

Released in the second quarter of 2021
98"
TH-98CQE1

86"
TH-86CQE1

75"
TH-75CQE1

65"
TH-65CQE1

55"
TH-55CQE1

Released in the second quarter of 2021
49"
TH-49CQE1

43"
TH-43CQE1



*Actual resolution : (98CQE1 only) 3840 x 2160p

Standard

Entry

InGlass™ Touch Technology

SQ1-IG Series

500cd/m²

86"
TH-86SQ1-IG

75"
TH-75SQ1-IG

65"
TH-65SQ1-IG

55"
TH-55SQ1-IG



*Actual resolution : 3840 x 2160p

SQE1-IG Series

500cd/m²

NEW
86"
TH-86SQE1-IG

NEW
75"
TH-75SQE1-IG

NEW
65"
TH-65SQE1-IG

NEW
55"
TH-55SQE1-IG



*Actual resolution : 3840 x 2160p

Infrared Technology

SQE1-IR Series

500cd/m²

NEW
86"
TH-86SQE1-IR

NEW
75"
TH-75SQE1-IR

NEW
65"
TH-65SQE1-IR

NEW
55"
TH-55SQE1-IR



*Actual resolution : 3840 x 2160p

CQE1-IR Series

400cd/m²

NEW
86"
TH-86CQE1-IR

NEW
75"
TH-75CQE1-IR

NEW
65"
TH-65CQE1-IR

NEW
55"
TH-55CQE1-IR



*Actual resolution : 3840 x 2160p

Multi-Touch Screen

* The availability varies depending on model.

★ The playable application format, GUI and operation procedure for the SQE1, and CQE1 Series' Media Player function are different from those of other models.

Panasonic Professional Displays Lineup

Video Wall

VF2H

700cd/m²

55"

TH-55VF2H

VF2

500cd/m²

55"

TH-55VF2

LFV9

500cd/m²

55"

TH-55LFV9

24/7 Operation

Media Player

4K Daisy Chain

DIGITAL LINK

0.88mm

3.5mm

Portrait

(LFV9 only)

(VF2H/VF2 only)

(VF2H/VF2 only)

(LFV9 only)

Presentation and Collaboration Solutions

PressIT Plug & Play Wireless Presentation System

PressIT

TY-WPS1

Receiver
(Set-top-Box)

Transmitter
(USB Type-A/HDMI)

Case for
Transmitter

NEW

Transmitter
(USB Type-C)

Fully Integrated Wireless Presentation System

WOLFVISION
CYNAP PURE

TY-SBPURE

SDM receiver



Pict Descriptions

4K

4K display
(Actual resolution: 3840 x 2160p)

4K Daisy Chain

Using a DisplayPort daisy chain connection to output a 4K image onto a 2x2 video wall

24/7 Operation

Capable of 24-hour continuous operation

18h Operation

Capable of 18-hour continuous operation

16h Operation

Capable of 16-hour continuous operation

Media Player

USB media player

4K Media Player

USB media player supporting 4K images

Model Number Legend

F Full HD

Q 4K UHD

TH-86SQ1

Display body

Screen size

S/L Standard

E/C Entry

V Video wall

B Touch screen

SQ1H Series



Model no.		TH-86SQ1H	TH-75SQ1H
DISPLAY PANEL	Screen Size (Diagonal)/Aspect Ratio	86-inch (2174.2mm) /16:9	75-inch (1892.7mm) /16:9
	Backlight	Direct LED	Direct LED
	Effective Display Area (W x H)	1895.0 x 1065.9 mm (74.60" x 41.96")	1649.6 x 927.9 mm (64.94" x 36.53")
	Resolution (H x V)	3840 x 2160	3840 x 2160
	Brightness (Typ)	1200 cd/m ²	1500 cd/m ²
	Contrast Ratio	1200:1	1200:1
	Dynamic Contrast Ratio	50000:1	50000:1
	Response Time	8.0 ms (G to G)	10.0 ms (G to G)
	Viewing Angle (Horizontal/Vertical)	178°/ 178° (CR>10)	178°/ 178° (CR>10)
	Panel Surface Treatment	Anti-glare low reflection type (Haze 3 %)	Anti-Glare type (Haze 1 %)
TERMINAL	HDMI In	HDMI TYPE-A connector x 2, 4K Compatible (HDCP2.2)	
	DisplayPort In	DisplayPort x 1 (HDCP2.2)	
	DisplayPort Out	DisplayPort x 1 (HDCP1.4)	
	DVI-D In	DVI-D 24-pin x 1	
	Audio In (L/R)	Stereo Mini Jack (Φ 3.5 mm) x 1 0.5 V [rms]	
	Audio Out	Stereo Mini Jack (Φ 3.5 mm) x 1 0.5 V [rms], Variable (- ∞ - 0 dB) (1 kHz 0 dB Input, 10 k Ω Load)	
	Serial In	D-sub 9-pin x 1, RS-232C Compatible	
	LAN	RJ45 x 1 Compatible with PLink™, 10BASE-T/100BASE-TX	
	DIGITAL LINK/LAN	RJ45 x 1 Compatible with Long reach mode and PLink™, 100BASE-TX (HDCP2.2)	
	IR In/Out	Stereo Mini Jack (Φ 3.5 mm) x 1/ x 1	
GENERAL	USB	USB connector (TYPE A) x 2, DC 5 V/2 A, DC 5 V/1 A (USB3.0 is supported)	
	Sensor	4-pole sub-mini jack (Φ 2.5 mm) x 1	
	Function Slot	x1 (Intel® SDM Specification Capability)	
	Power Requirements	110-240 V AC, 50 Hz/60 Hz	
	Power Consumption	730 W	720 W
	Power Off Condition	Approx. 0.3 W	Approx. 0.3 W
	Stand-by Condition	Approx. 0.5 W	Approx. 0.5 W
	Dimensions (W x H x D) *Including handles.	1929 x 1100 x 96 mm (75.95" x 43.31" x 3.75")	1684 x 962 x 96 mm (66.28" x 37.9" x 3.75")
	Carton Size (W x H x D)	2145 x 1290 x 280 mm (84.5" x 50.8" x 11.1")	1870 x 1143 x 280 mm (73.7" x 45.0" x 11.1")
	Bezel Width	15.5 mm (0.61") (T/B/L/R)	14.9 mm (0.59") (T/B/L/R)
OPTIONS	Weight	Approx. 57.8 kg (127.4 lbs.)	Approx. 42.2 kg (93.0 lbs.)
	Gross Weight	Approx. 73 kg (160.9 lbs.)	Approx. 56 kg (123.4 lbs.)
	Pitch for Wall-Hanging	VESA Compliant 600 x 400 mm (23.6" x 15.8") M8	VESA Compliant 600 x 400 mm (23.6" x 15.8") M8
	Built-in Speaker	20 W [10 W + 10 W]	20 W [10 W + 10 W]
	Orientation	Landscape/Portrait*1	Landscape/Portrait*1
	Tilting Angle	Landscape: 0-20 degrees forward Portrait: 0-20 degrees forward	Landscape: 0-20 degrees forward/backward Portrait: 0-20 degrees forward/backward
	Operating Environment	Temperature: 0 °C to 40 °C (32 °F to 104 °F)*2 : 0 °C to 35 °C (32 °F to 95 °F)*3, Humidity: 20% to 80% (No condensation)	
	Storage Environment	Temperature: -20 °C to 60 °C (-4 °F to 140 °F), Humidity: 20 % to 80 % (No condensation)	
	Operating Time*4	24 h/day	
	3G-SDI Terminal Board	TY-SB01SS	TY-SB01SS
OPTIONS	Wall-hanging Bracket	—	—
	Early Warning Software*5	ET-SWA100/105 Series	ET-SWA100/105 Series
	Digital Interface Box	—	—
	DIGITAL LINK Switcher	ET-YFB200G	ET-YFB200G
OPTIONS	Auto Display Adjustment Upgrade Kit	—	—

*1: When installing the display vertically, be sure that the power indicator comes to the right side.

*2: For up to 1400 m (4593 ft) altitude.

*3: For between 1400 m to 2800 m (4593 ft to 9186 ft) altitude.

*4: In case of long time, the moving image is recommended to be displayed. If you display a still picture for an extended period, the image retention might remain on the screen. However, image retention can gradually disappear by displaying a moving images.

*5: Part number suffix may differ depending on the license type.

★The handle part excluded, the thickness is 82 mm (3.22" : TH-98SQ1/ 82 mm (3.22" : TH-86SQ1).

Panasonic display ideas for a wide range of applications

Transportation



Uninterrupted transmission of constantly changing information. The wide-viewing-angle panel provides a powerful, eye-catching view. Using a touch-screen model floor guide offers detailed store information.

Recommended models

- SQ1/SQE1 Series >> 6p~
- VF/LFV Series >> 28p~

Control room



Use a 24/7 operation display where interrupted images are simply not permitted. When problems do occur, the fail-over and fail-back functions minimize shutdown.

Recommended models

- SQ1/SQE1 Series >> 6p~
- VF/LFV Series >> 28p~

Retail shop



For attractive product displays, the 4K model is also recommended for in-store signage. The narrow bezel provides effective space utilization. An easy-to-see angle can also be adjusted. And Content Management Software makes it easy to control signage for individual shops.

Recommended models

- CQE1 Series >> 14p~
- Content Management Software >> 34p

Open space



Screens tend to be difficult to see in a bright room such as an open space or by the window where natural light directly enters. A high-brightness display maintains visibility regardless of the surrounding environment and offers eye-catching images.

Recommended models

- SQ1H Series >> 4p

SQ1 Series



Model no.		TH-98SQ1	TH-86SQ1
DISPLAY PANEL	Screen Size (Diagonal)/Aspect Ratio	98-inch (2476.9 mm)/16:9	86-inch (2174.2 mm)/16:9
	Panel Type	IPS / Direct LED	IPS / Edge LED
	Effective Display Area (W x H)	2158.8 x 1214.3 mm (84.99" x 47.80")	1895.0 x 1065.9 mm (74.60" x 41.96")
	Resolution (H x V)	3840 x 2160	3840 x 2160
	Brightness (Typ)	500 cd/m ²	500 cd/m ²
	Contrast Ratio	1300:1	1200:1
	Dynamic Contrast Ratio	50000:1	50000:1
	Response Time	8 ms (G to G)	8 ms (G to G)
TERMINAL	Viewing Angle (Horizontal/Vertical)	178°/178° (CR≥10)	178°/178° (CR≥10)
	Panel Surface Treatment	Anti-Glare (Haze 28 %)	Anti-Glare (Haze 28 %)
	HDMI In	HDMI TYPE-A Connector x 2 ¹	
	DisplayPort In	DisplayPort x 1	
	DisplayPort Out	DisplayPort x 1	
	USB	USB Connector (TYPE-A) x 2, DC 5 V/2 A, DC 5V/1A (USB 3.0 Supported)	
	DVI-D In	DVI-D 24-pin x 1	
	Audio In (L/R)	Stereo Mini Jack (M3) x 2 (Shared with PC In)	
GENERAL	PC In	Mini D-sub 15-pin x 1 (Female) ²	
	Audio In (L/R)	Stereo Mini Jack (M3) x 2 (Shared with DVI-D In)	
	Audio Out	Stereo Mini Jack (M3) x 1	
	Serial In	D-sub 9-pin x 1, RS232C Compatible	
	LAN	RJ45 x 1, 10 BASE-T / 100 BASE-TX, Compatible with PLink™	
	DIGITAL LINK	RJ45 x 1, 100 BASE-TX, Compatible with long reach mode and PLink™	
	IR In/Out	Stereo Mini Jack (M3) x 1 / x 1	
	Function Slot	x1 (Intel® SDM Specification Capability)	
GENERAL	Power Requirements	220-240 V AC, 50 Hz/60 Hz	
	Power Consumption	685 W	480 W
	Power Off Condition	Approx. 0.3 W	Approx. 0.3 W
	Stand-by Condition	Approx. 0.5 W	Approx. 0.5 W
	Dimensions (W x H x D)	2194 x 1249 x 90*mm (86.35" x 49.15" x 3.54"*)	1928 x 1099 x 86*mm (75.91" x 43.27" x 3.39"*)
	Carton Size (W x H x D)	2513 x 1704 x 450 mm (98.9" x 67.1" x 17.7")	2224 x 1427 x 373 mm (87.6" x 56.2" x 14.7")
	Bezel Width	16.0 mm (0.63") (T/B/L/R)	15.2 mm (0.6") (T/B/L/R)
	Weight	Approx. 90.0 kg (198.5 lbs.)	Approx. 66.0 kg (145.5 lbs.)
OPTIONS	Gross Weight	Approx.138.0 kg (304.3 lbs.)	Approx. 89.0 kg (196.3 lbs.)
	Pitch for Wall-Hanging	800 x 500 mm (31.5" x 19.7") VESA Compliant	600 x 400 mm (23.6" x 15.8") VESA Compliant
	Protective Glass	—	
	Built-in Speaker	20 W [10 W + 10 W]	
	Orientation	Landscape/Portrait	
	Tilting Angle	0-20 degrees forward/backward with landscape/portrait setting	
	Operating Environment	Temperature : 0 °C to 40 °C (32°F to 104°F) / Humidity: 20% to 80% (Non-condensation)	
	Storage Environment	Temperature : -20 °C to 60 °C (-4°F to 140°F) / Humidity: 20% to 80% (Non-condensation)	
OPTIONS	Operating Time ³	24 h/day	
	3G-SDI Terminal Board	TY-SB01SS	TY-SB01SS
	Wall-hanging Bracket	TY-WK98PV1	TY-WK98PV1
	Early Warning Software ⁴	ET-SWA100/105 Series	ET-SWA100/105 Series
	Digital Interface Box	ET-YFB100G	ET-YFB100G
	DIGITAL LINK Switcher	ET-YFB200G	ET-YFB200G
OPTIONS	Auto Display Adjustment Upgrade Kit ⁵	TY-VUK10	TY-VUK10

*1: HDCP2.2 supported. *2: RGB/YpCbPr switchable.

*3: In case of long time, the moving image is recommended to be displayed. If you display a still picture for an extended period, the image retention might remain on the screen. However, image retention can gradually disappear by displaying a moving images.

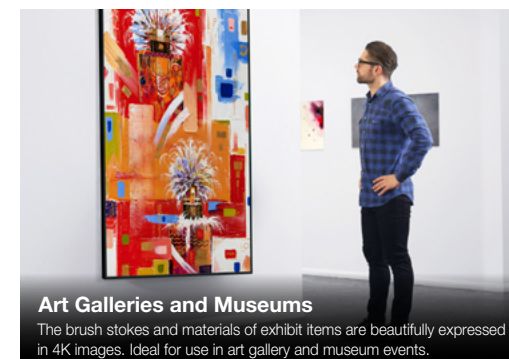
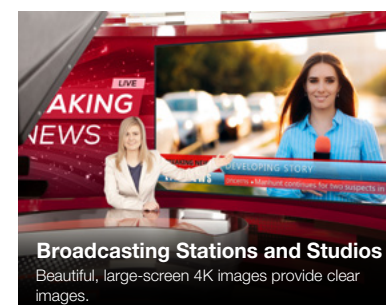
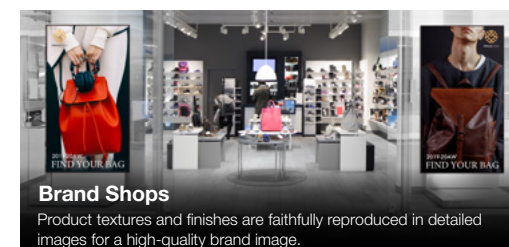
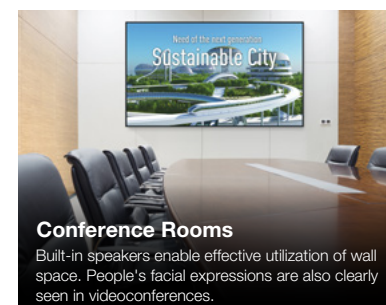
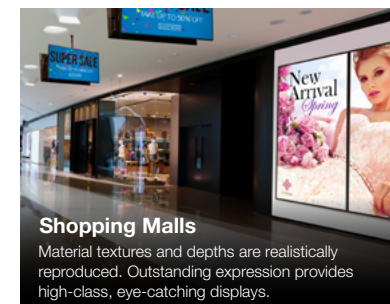
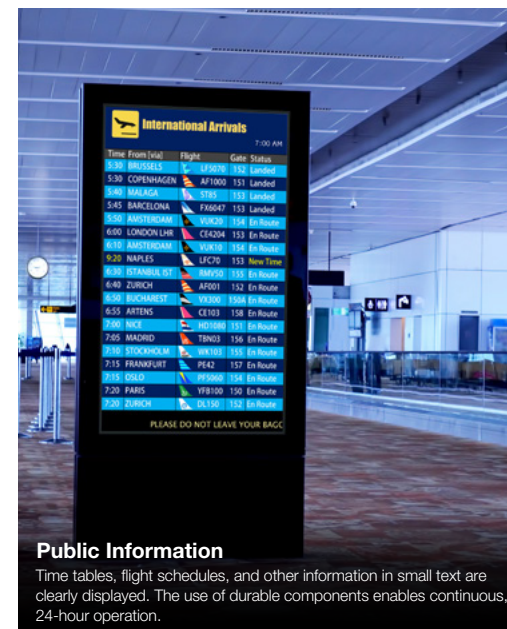
*4: Multi Monitoring & Control Software Ver.2.0 or later is required. Part number suffix may differ depending on the license type.

*5: Download the latest Video Wall Manager from Global Website in advance. (<https://panasonic.net/cns/prodisplays/download/software/vwm/>)

★The handle part excluded, the thickness is 81 mm (3.17": TH-98SQ1)/76 mm (2.99": TH-86SQ1).

Standard

A wide range of professional applications



SQ1 Series



75"



65"



55"



49"



Model no.	TH-75SQ1	TH-65SQ1		TH-55SQ1	TH-49SQ1
Screen size (Diagonal)/Aspect Ratio	75-inch (1892.7 mm)/16:9	65-inch (1638.9 mm)/16:9		55-inch (1387.8 mm)/16:9	49-inch (1232.0 mm)/16:9
Panel Type	IPS/Edge LED	IPS/Edge LED		IPS/Edge LED	IPS/Edge LED
Effective Display Area (W x H)	1649.6 x 927.9 mm (64.94" x 36.53")	1428.4 x 803.5 mm (56.23" x 31.63")		1209.6 x 680.4 mm (47.62" x 26.78")	1073.8 x 604.0 mm (42.27" x 23.77")
Resolution (H x V)	3840 x 2160	3840 x 2160		3840 x 2160	3840 x 2160
Brightness	500 cd/m ²	500 cd/m ²		500 cd/m ²	500 cd/m ²
Contrast Ratio	1200:1	1100:1		1100:1	1100:1
Response Time	8.0 ms (G to G)	8.0 ms (G to G)		8.0 ms (G to G)	8.0 ms (G to G)
Viewing Angle (Horizontal/Vertical)	178° / 178° (CR≥10)	178° / 178° (CR≥10)		178° / 178° (CR≥10)	178° / 178° (CR≥10)
Panel Surface Treatment	Anti-Glare (Haze 28 %)	Anti-Glare (Haze 28 %)		Anti-Glare (Haze 28 %)	Anti-Glare (Haze 28 %)
HDMI In	HDMI TYPE A Connector x 2 (HDCP2.2 supported)			HDMI TYPE A Connector x 2 (HDCP2.2 supported)	
DisplayPort In	DisplayPort x 1 (HDCP2.2 supported)*1			DisplayPort x 1 (HDCP2.2 supported)*1	
DisplayPort Out	DisplayPort x 1 (HDCP1.4 supported)*1			DisplayPort x 1 (HDCP1.4 supported)*1	
USB	USB Connector (TYPE-A) x 2, DC 5 V/2 A, DC 5V/1A (USB 3.0 Supported)			USB Connector (TYPE-A) x 2, DC 5 V/2 A, DC 5V/1A (USB 3.0 Supported)	
DVI-D In	DVI-D 24-pin x 1 (DVI Revision 1.0 Compliant), HDCP 1.1 compatible			DVI-D 24-pin x 1 (DVI Revision 1.0 Compliant), HDCP 1.1 compatible	
Audio In (L/R)	Stereo Mini Jack (M3) x 2 (Shared with PC In)			Stereo Mini Jack (M3) x 2 (Shared with PC In)	
PC In	Mini D-sub 15-pin x 1 (Female)			Mini D-sub 15-pin x 1 (Female)	
Audio In (L/R)	Stereo Mini Jack (M3) x 2 (Shared with DVI-D In)			Stereo Mini Jack (M3) x 2 (Shared with DVI-D In)	
Audio Out	30 W (15 W + 15 W) 10% THD			30 W (15 W + 15 W) 10% THD	
Serial In	D-Sub 9-pin x 1, RS232C Compatible			D-Sub 9-pin x 1, RS232C Compatible	
DIGITAL LINK	RJ45 x 1, 100 BASE-TX, Compatible with long reach mode and PLink™			RJ45 x 1, 100 BASE-TX, Compatible with long reach mode and PLink™	
LAN	RJ45 x 1, 10 BASE-T / 100 BASE-TX, Compatible with PLink™			RJ45 x 1, 10 BASE-T / 100 BASE-TX, Compatible with PLink™	
IR In/Out	Stereo Mini Jack (M3) x 1 / x 1			Stereo Mini Jack (M3) x 1 / x 1	
Function Slot	x1 (Intel® SDM specification)			x1 (Intel® SDM specification)	
Power Requirements	220-240 V AC, 50 Hz/60 Hz			220-240 V AC, 50 Hz/60 Hz	
Power Consumption	385 W (TBD)			300 W	
Power Off Condition	Approx. 0.3 W			Approx. 0.3 W	
Stand-by Condition	Approx. 0.5 W			Approx. 0.5 W	
Dimensions (W x H x D)	1681 x 959 x 73 mm (66.15" x 37.75" x 2.87")	1458 x 836 x 77 mm (57.40" x 32.90" x 3.02")		1240 x 714 x 74 mm (48.82" x 28.09" x 2.91")	1104 x 637 x 73 mm (43.48" x 25.08" x 2.88")
Carton Size (W x H x D)	1832 x 1283 x 280 mm (72.13" x 50.52" x 11.03")	1642 x 1037 x 248 mm (64.7" x 40.9" x 9.8")		1404 x 879 x 203 mm (55.3" x 34.6" x 8.0")	1248 x 800 x 185 mm (49.2" x 31.5" x 7.8")
Bezel Width	T/B/L/R :14.8 mm (0.58")	T:12.2 mm (0.48"), B:15.8 mm (0.62"), L/R:12.7 mm (0.50")		T:12.2 mm (0.48"), B:15.8 mm (0.62"), L/R:12.7 mm (0.50")	T/B:14.2 mm (0.56"), L/R:12.9 mm (0.51")
Weight	Approx. 56.0 kg (123.5 lbs.)			Approx. 25.5 kg (56.3 lbs.)	
Gross Weight	Approx. 71.0 kg (156.6 lbs.)			Approx. 34.0 kg (75.0 lbs.)	
Pitch for Wall-Hanging	VESA compliant 600 x 400 mm (23.6" x 15.8")			VESA compliant 400 x 400 mm (15.8" x 15.8")	
Built-in Speaker	Yes			Yes	
Orientation	Landscape/Portrait*2			Landscape/Portrait*2	
Tilting Angle*3	Landscape setting: 0 - 45 degrees forward/backward Portrait setting: 0 - 20 degrees forward/backward	Landscape setting: 0 - 45 degrees forward/backward Portrait setting: 0 - 45 degrees forward/backward		Landscape setting: 0 - 45 degrees forward/backward Portrait setting: 0 - 45 degrees forward/backward	
Operating Environment	Temperature: 0 °C to 40 °C (32 °F to 104 °F)*4 / 0 °C to 35 °C (32 °F to 95 °F)*5, Humidity: 20 % to 80 % (No Condensation)			Temperature: 0 °C to 40 °C (32 °F to 104 °F)*4 / 0 °C to 35 °C (32 °F to 95 °F)*5, Humidity: 20 % to 80 % (No Condensation)	
Storage Environment	Temperature: -20 °C to 60 °C (-4 °F to 140 °F), Humidity: 20 % to 80 % (No Condensation)			Temperature: -20 °C to 60 °C (-4 °F to 140 °F), Humidity: 20 % to 80 % (No Condensation)	
Operating Time*6	24 h/day			24 h/day	
3G-SDI Terminal Board	TY-SB01SS			TY-SB01SS	
Pedestal	TY-ST55PE9			TY-ST55PE9	
Wall-Hanging Bracket	TY-WK98PV1			—	
Digital Interface Box	ET-YFB100G			ET-YFB100G	
DIGITAL LINK Switcher	ET-YFB200G			ET-YFB200G	
Early Warning Software*7	ET-SWA100/105 Series			ET-SWA100/105 Series	
Auto Display Adjustment Upgrade Kit*8	TY-VUK10			TY-VUK10	

*1: Input: HDCP 2.2 Output: NG / Input: HDCP 1.4 Output: HDCP 1.4 / Input: No HDCP Output: No HDCP

*2: When installing the display vertically, be sure that the power indicator comes to the right side.

*3: Please contact your sales representative with regard to the tilt angle before installation.

*4: For up to 1400 m (4593 ft) altitude.

*5: For between 1400m (4593 ft) to 2800 m (9186 ft) attitude.

*6: In case of long time, the moving image is recommended to be displayed. If you display a still picture for an extended period, the image retention might remain on the screen. However, image retention can gradually disappear by displaying a moving images.

*7: Multi Monitoring & Control Software Ver. 2.1 or later is required. Part number suffix may differ depending on the license type.

*8: Download the latest Video Wall Manager from Global Website in advance. (<https://panasonic.net/cns/prodisplays/download/software/vwm/>)

3G-SDI Terminal Board TY-SB01SS

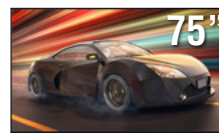
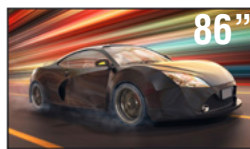
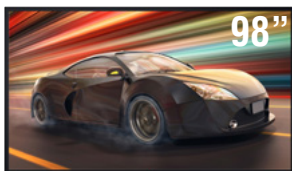


This 3G-SDI terminal board is able to input 3G-SDI signals into displays supporting Intel® SDM specification slots.

*This terminal board is supported only when the main software version of the display is 3.5000 or later and the sub software version of the display is 03.50 or later. For updates, please contact your Panasonic dealer.

SQE1 Series

Released in the second quarter of 2021



Standard

Model no.	TH-98SQE1	TH-86SQE1	TH-75SQE1	TH-65SQE1
Screen Size (Diagonal)/Aspect Ratio	98-inch (2476.9 mm)/16:9	86-inch (2174.2 mm)/16:9	75-inch (1892.7 mm)/16:9	65-inch (1638.9 mm)/16:9
Backlight	Direct LED	Edge LED	Direct LED	Direct LED
Effective Display Area (W x H)	2158.8 x 1214.3 mm (84.99" x 47.80")	1895.0 x 1065.9 mm (74.60" x 41.96")	1649.6 x 927.9 mm (64.94" x 36.53")	1428.4 x 803.5 mm (56.23" x 31.63")
Resolution (H x V)	3840 x 2160	3840 x 2160	3840 x 2160	3840 x 2160
Brightness (Typ)	500 cd/m ²	500 cd/m ²	500 cd/m ²	500 cd/m ²
Contrast Ratio	1200:1	1200:1	1200:1	1200:1
Dynamic Contrast Ratio	50000:1	50000:1	50000:1	50000:1
Response Time	8.0 ms (G to G)	8.0 ms (G to G)	8.0 ms (G to G)	8.0 ms (G to G)
Viewing Angle (Horizontal/Vertical)	178°/178° (CR>10)	178° / 178° (CR≥10)	178°/178° (CR>10)	178°/178° (CR>10)
Panel Surface Treatment	Anti-Glare (Haze 25 %)	Anti-Glare Low Reflection (Haze 3 %)	Anti-Glare Low Reflection (Haze 3 %)	Anti-Glare (Haze 1 %)
HDMI In	HDMI TYPE A Connector x 4 (HDCP 2.2 supported)		HDMI TYPE A Connector x 4 (HDCP 2.2 supported)	
DisplayPort In	DisplayPort x 1		DisplayPort x 1	
DisplayPort Out	DisplayPort x 1		DisplayPort x 1	
USB	USB Connector (TYPE-A) x 2, (Type-C) x 1, Internal (Type-A) x 1		USB Connector (TYPE-A) x 2, (Type-C) x 1, Internal (Type-A) x 1	
PC In	Mini D-sub 15-pin x 1 (Female)		Mini D-sub 15-pin x 1 (Female)	
Audio In (L/R)	Pin Jack Terminal (L/R) x 1		Pin Jack Terminal (L/R) x 1	
Audio Out	Stereo Mini Jack (M3) x 1, SPDIF x 1		Stereo Mini Jack (M3) x 1, SPDIF x 1	
Serial In	D-sub 9-pin x 1 (Female), RS-232C Compatible		D-sub 9-pin x 1 (Female), RS-232C Compatible	
LAN	RJ45 x 1		RJ45 x 1	
IR In	Stereo Mini Jack (M3) x 1		Stereo Mini Jack (M3) x 1	
Function Slot	x1 (Intel® SDM specification, Corresponding size SDM-S/SDM-L, Supply power 40 W)		x1 (Intel® SDM specification, Corresponding size SDM-S/SDM-L, Supply power 40 W)	
Wi-Fi	Dongle, IEEE 802.11. a/b/g/n/ Dual Wi-Fi CERTIFIED		Built-in, IEEE 802.11. a/b/g/n/ Dual Wi-Fi CERTIFIED	
Power Requirements	220-240 V AC, 50 Hz/60 Hz	220-240 V AC, 50 Hz/60 Hz	220-240 V AC, 50 Hz/60 Hz	220-240 V AC, 50 Hz/60 Hz
Power Consumption	703 W (SLOT not in use: 650 W)	364 W (SLOT not in use: 312 W)	334 W (SLOT not in use: 280 W)	281W (SLOT not in use: 229 W)
Power Off Condition	0 W	0 W	0 W	0 W
Stand-by Condition	Approx. 0.5 W	Approx. 0.5 W	Approx. 0.5 W	Approx. 0.5 W
Dimensions (W x H x D)★	2216 x 1271 x 99 mm (87.25" x 50.02" x 3.87")	1929 x 1100 x 81 mm (75.91" x 43.28" x 3.16")	1684 x 968 x 100 mm (66.28" x 38.09" x 3.92")	1460 x 842 x 96 mm (57.46" x 33.12" x 3.77")
Carton Size (W x H x D)	2435 x 1684 x 387 mm (95.87" x 66.30" x 15.24")	2224 x 1427 x 373 mm (87.56" x 56.19" x 14.69")	1948 x 1170 x 210 mm (76.70" x 46.07" x 8.27")	1607 x 980 x 177 mm (63.27" x 38.59" x 6.97")
Bezel Width	28.2 mm (1.11") (T/R/L/B)	15.2 mm (0.6") (T/R/L/B)	15.7 mm (0.62") (T/R/L), 21.5 mm (0.85") (B)	14.7 mm (0.58") (T/R/L), 21.4 mm (0.84") (B)
Weight	Approx. 99.8 kg (220.1 lbs.)	Approx. 66 kg (145.5 lbs.)	Approx. 37.4 kg (82.5 lbs.)	Approx. 25.8 kg (56.9 lbs.)
Gross Weight	Approx. 150 kg (330.7 lbs.)	Approx. 89 kg (196.3 lbs.)	Approx. 52.0 kg (114.7 lbs.)	Approx. 36 kg (79.4 lbs.)
Pitch for Wall-Hanging	VESA Compliant 800 x 400 mm (31.5" x 15.8")	VESA Compliant 600 x 400 mm (23.6" x 15.8")	VESA Compliant 600 x 400 mm (23.6" x 15.8")	VESA Compliant 400 x 400 mm (15.8" x 15.8")
Built-in Speaker	24 W [12 W + 12 W]	24 W [12 W + 12 W]	24 W [12 W + 12 W]	16 W [8 W + 8 W]
Orientation ^{*1}	Landscape/Portrait		Landscape/Portrait	
Tilting Angle ^{*2}	0-20 degrees forward with landscape/portrait setting		0-20 degrees forward with landscape/portrait setting	
Operating Environment	Temperature: 0 °C to 40 °C (32 °F to 104 °F) for up to 1400 m (4593 ft) altitude/ 0 °C to 35 °C (32 °F to 95°F) for between 1400 m to 2800 m (4593 ft to 9186 ft) altitude Humidity: 20 % to 80 % (No Condensation), Altitude: lower than 2800 m		Temperature: 0 °C to 40 °C (32 °F to 104 °F) for up to 1400 m (4593 ft) altitude/ 0 °C to 35 °C (32 °F to 95°F) for between 1400 m to 2800 m (4593 ft to 9186 ft) altitude Humidity: 20 % to 80 % (No Condensation), Altitude: lower than 2800 m	
Storage Environment	Temperature: -20 °C to 60 °C (-4 °F to 140 °F), Humidity: 20 % to 80 % (No Condensation)		Temperature: -20 °C to 60 °C (-4 °F to 140 °F), Humidity: 20 % to 80 % (No Condensation)	
Operating Time ^{*3}	24 h/day		24 h/day	

*1: When installing the display vertically, be sure that the power indicator comes to the right side.

*2: Please contact your sales representative with regard to the tilt angle before installation.

*3: In case of long time, the moving image is recommended to be displayed. If you display a still picture for an extended period, the image retention might remain on the screen. However, image retention can gradually disappear by displaying a moving images.

★Excluding remote control receiver.

SQE1 Series



Model no.	TH-55SQE1	TH-49SQE1	TH-43SQE1
Screen Size (Diagonal)/Aspect Ratio	55-inch (1387.8 mm)/16:9	49-inch (1232.0 mm)/16:9	43-inch (1079.8 mm)/16:9
Backlight	Direct LED	Direct LED	Direct LED
Effective Display Area (W x H)	1209.6 x 680.4 mm (47.62" x 26.78")	1073.8 x 604.0 mm (42.47" x 23.77")	941.1 x 529.4 mm (37.05" x 20.84")
Resolution (H x V)	3840 x 2160	3840 x 2160	3840 x 2160
Brightness (Typ)	500 cd/m ²	500 cd/m ²	500 cd/m ²
Contrast Ratio	1200:1	1200:1	1200:1
Dynamic Contrast Ratio	50000:1	50000:1	50000:1
Response Time	8.0 ms (G to G)	8.0 ms (G to G)	8.0 ms (G to G)
Viewing Angle (Horizontal/Vertical)	178°/178° (CR>10)	178°/178° (CR>10)	178°/178° (CR>10)
Panel Surface Treatment	Anti-Glare (Haze 1 %)	Anti-Glare (Haze 1 %)	Anti-Glare (Haze 1 %)
HDMI In	HDMI TYPE A Connector x 4 (HDCP 2.2 supported)		HDMI TYPE A Connector x 4 (HDCP 2.2 supported)
DisplayPort In	DisplayPort x 1		DisplayPort x 1
DisplayPort Out	DisplayPort x 1		DisplayPort x 1
USB	USB Connector (TYPE-A) x 2, (Type-C) x 1, Internal (Type-A) x 1		USB Connector (TYPE-A) x 2, (Type-C) x 1, Internal (Type-A) x 1
PC In	Mini D-sub 15-pin x 1 (Female)		Mini D-sub 15-pin x 1 (Female)
Audio In (L/R)	Pin Jack Terminal (L/R) x 1		Pin Jack Terminal (L/R) x 1
Audio Out	Stereo Mini Jack (M3) x 1, SPDIF x 1		Stereo Mini Jack (M3) x 1, SPDIF x 1
Serial In	D-sub 9-pin x 1 (Female), RS-232C Compatible		D-sub 9-pin x 1 (Female), RS-232C Compatible
LAN	RJ45 x 1		RJ45 x 1
IR In	Stereo Mini Jack (M3) x 1		Stereo Mini Jack (M3) x 1
Function Slot	x1 (Intel® SDM specification, Corresponding size SDM-S/SDM-L, Supply power 40 W)		x1 (Intel® SDM specification, Corresponding size SDM-S/SDM-L, Supply power 40 W)
Wi-Fi	Built-in, IEEE 802.11. a/b/g/n/ Dual Wi-Fi CERTIFIED		Built-in, IEEE 802.11. a/b/g/n/ Dual Wi-Fi CERTIFIED
Power Requirements	220-240 V AC, 50 Hz/60 Hz	220-240 V AC, 50 Hz/60 Hz	220-240 V AC, 50 Hz/60 Hz
Power Consumption	197 W (SLOT not in use: 143 W)	186 W (SLOT not in use: 133 W)	172 W (SLOT not in use: 119 W)
Power Off Condition	0 W	0 W	0 W
Stand-by Condition	Approx. 0.5 W	Approx. 0.5 W	Approx. 0.5 W
Dimensions (W x H x D) *	1239 x 712 x 104 mm (48.75" x 28.02" x 4.09")	1102 x 635 x 105 mm (43.37" x 24.98" x 4.11")	968 x 558 x 106 mm (38.01" x 21.94" x 4.17")
Carton Size (W x H x D)	1369 x 874 x 165 mm (53.90" x 34.41" x 6.50")	1215 x 775 x 165 mm (47.84" x 30.52" x 6.50")	1050 x 718 x 178 mm (41.34" x 28.27" x 7.01")
Bezel Width	12.3 mm (0.48") (T/R/L), 15.1 mm (0.59") (B)	11 mm (0.43") (T/R/L), 14.4 mm (0.57") (B)	9.6 mm (0.38") (T/R/L), 13.2 mm (0.52") (B)
Weight	Approx. 17.2 kg (38.0 lbs.)	Approx. 13 kg (28.7 lbs.)	Approx. 10.3 kg (22.7 lbs.)
Gross Weight	Approx. 24 kg (53.0 lbs.)	Approx. 18 kg (39.7 lbs.)	Approx. 15 kg (33.1 lbs.)
Pitch for Wall-Hanging	VESA Compliant 400 x 200 mm (15.8" x 7.9")	VESA Compliant 200 x 200 mm (7.9" x 7.9")	VESA Compliant 200 x 200 mm (7.9" x 7.9")
Built-in Speaker	16 W [8 W + 8 W]	16 W [8 W + 8 W]	16 W [8 W + 8 W]
Orientation ^{*1}	Landscape/Portrait		Landscape/Portrait
Tilting Angle ^{*2}	0-20 degrees forward with landscape/portrait setting		0-20 degrees forward with landscape/portrait setting
Operating Environment	Temperature: 0 °C to 40 °C (32 °F to 104 °F) for up to 1400 m (4593 ft) altitude/ 0 °C to 35 °C (32 °F to 95 °F) for between 1400 m to 2800 m (4593 ft to 9186 ft) altitude Humidity: 20 % to 80 % (No Condensation), Altitude: lower than 2800 m		Temperature: 0 °C to 40 °C (32 °F to 104 °F) for up to 1400 m (4593 ft) altitude/ 0 °C to 35 °C (32 °F to 95 °F) for between 1400 m to 2800 m (4593 ft to 9186 ft) altitude Humidity: 20 % to 80 % (No Condensation), Altitude: lower than 2800 m
Storage Environment	Temperature: -20 °C to 60 °C (-4 °F to 140 °F), Humidity: 20 % to 80 % (No Condensation)		Temperature: -20 °C to 60 °C (-4 °F to 140 °F), Humidity: 20 % to 80 % (No Condensation)
Operating Time ^{*3}	24 h/day		24 h/day

*1: When installing the display vertically, be sure that the power indicator comes to the right side.

*2: Please contact your sales representative with regard to the tilt angle before installation.

*3: In case of long time, the moving image is recommended to be displayed. If you display a still picture for an extended period, the image retention might remain on the screen. However, image retention can gradually disappear by displaying a moving images.

*Excluding remote control receiver.

Standard

Standard equipped a wide range of terminals. Meets a wide range of applications

Equipped with a DisplayPort input and output and Wi-Fi to enable wireless transmission with a PC. In addition to storefront signage, the SQE1 Series meets a wide range of applications such as a conference monitor and surveillance monitor



Preinstalled HTML5 Browser Allows for Easy Signage Updates

The SQE1 series is preinstalled with the Android-based HTML5 browser. So, it can serve as signage using a without an external device, such as a set-top box or PC, or without a connection cable.



CQE1 Series

Released in the second quarter of 2021



Model no.	TH-98CQE1	TH-86CQE1	TH-75CQE1	TH-65CQE1
Screen Size (Diagonal)/Aspect Ratio	98-inch (2476.9 mm)/16:9	86-inch (2174.2 mm)/16:9	75-inch (1892.7 mm)/16:9	65-inch (1638.9 mm)/16:9
Backlight	Direct LED	Edge LED	Direct LED	VA/Direct LED
Effective Display Area (W x H)	2158.8 x 1214.3 mm (84.99" x 47.80")	1895.0 x 1065.9 mm (74.60" x 41.96")	1649.6 x 927.9 mm (64.94" x 36.53")	1428.4 x 803.5 mm (56.23" x 31.63")
Resolution (H x V)	3840 x 2160	3840 x 2160	3840 x 2160	3840 x 2160
Brightness (Typ)	500 cd/m ²	400 cd/m ²	400 cd/m ²	400 cd/m ²
Contrast Ratio	1200:1	1200:1	1400:1	5000:1
Dynamic Contrast Ratio	50000:1	50000:1	50000:1	50000:1
Response Time	8.0 ms (G to G)	8.0 ms (G to G)	8.0 ms (G to G)	8.0 ms (G to G)
Viewing Angle (Horizontal/Vertical)	178°/178° (CR>10)	178°/178° (CR>10)	178°/178° (CR>10)	178°/178° (CR>10)
Panel Surface Treatment	Anti-Glare (Haze 25 %)	Anti-Glare Low Reflection (Haze 3 %)	Anti-Glare Low Reflection (Haze 3 %)	Anti-Glare (Haze 2.4 %)
HDMI In	HDMI TYPE A Connector x 4 (HDCP 2.2)		HDMI TYPE A Connector x 4 (HDCP 2.2)	
USB	USB Connector (TYPE-A) x 2, (Type-C) x 1, Internal (Type-A) x 1		USB Connector (TYPE-A) x 2, (Type-C) x 1, Internal (Type-A) x 1	
PC In	Mini D-sub 15-pin x 1 (Female)		Mini D-sub 15-pin x 1 (Female)	
Audio In (L/R)	Pin Jack (L/R) x 1		Pin Jack (L/R) x 1	
Audio Out	Stereo Mini Jack (M3) x 1, SPDIF x 1		Stereo Mini Jack (M3) x 1, SPDIF x 1	
Serial In	D-sub 9-pin x 1 (Female), RS-232C Compatible		D-sub 9-pin x 1 (Female), RS-232C Compatible	
LAN	RJ45 x 1		RJ45 x 1	
IR In	Stereo Mini Jack (M3) x 1		Stereo Mini Jack (M3) x 1	
Wi-Fi	Dongle, IEEE 802.11. a/b/g/n/ Dual Wi-Fi CERTIFIED		Built-in, IEEE 802.11. a/b/g/n/ Dual Wi-Fi CERTIFIED	
Power Requirements	220-240 V AC, 50 Hz/60 Hz	220-240 V AC, 50 Hz/60 Hz	220-240 V AC, 50 Hz/60 Hz	220-240 V AC, 50 Hz/60 Hz
Power Consumption	650 W	364 W	307 W	224 W
Power Off Condition	0 W	0 W	0 W	0 W
Stand-by Condition	Approx. 0.5 W	Approx. 0.5 W	Approx. 0.5 W	Approx. 0.5 W
Dimensions (W x H x D) *	2216 x 1271 x 91 mm (87.25" x 50.02" x 3.55")	1929 x 1100 x 80 mm (75.91" x 43.28" x 3.13")	1684 x 968 x 100 mm (66.28" x 38.74" x 3.92")	1460 x 842 x 80 mm (57.46" x 33.12" x 3.15")
Carton Size (W x H x D)	2423 x 1563 x 380 mm (95.40" x 61.54" x 14.97") (TBD)	2163 x 1405 x 380 mm (85.16" x 55.32" x 14.96")	1948 x 1170 x 210 mm (76.70" x 46.07" x 8.27")	1607 x 980 x 177 mm (63.27" x 38.59" x 6.97")
Bezel Width	28.2 mm (1.11") (T/R/L/B)	15.3 mm (0.6") (T/R/L/B)	15.7 mm (0.62") (T/R/L), 21.5 mm (0.85") (B)	14.7 mm (0.58") (T/R/L), 21.4 mm (0.84") (B)
Weight	Approx. 102.3 kg (225.5 lbs.)	Approx. 61.7 kg (136.1 lbs.)	Approx. 36.8 kg (81.2 lbs.)	Approx. 25.2 kg (55.6 lbs.)
Gross Weight	Approx. 147.5 kg (325.2 lbs.)	Approx. 84.0 kg (185.2 lbs.)	Approx. 51.0 kg (112.5 lbs.)	Approx. 36.0 kg (79.4 lbs.)
Pitch for Wall-Hanging	VESA Compliant 800 x 400 mm (31.6" x 15.8)	VESA Compliant 600 x 400 mm (23.6" x 15.8")	VESA Compliant 600 x 400 mm (23.6" x 15.8")	VESA Compliant 400 x 400 mm (15.8" x 15.8")
Built-in Speaker	24 W [12W + 12 W]	24 W [12 W + 12 W]	24 W [12 W + 12 W]	16 W [8 W + 8 W]
Orientation	Landscape (Not support to the portrait installation)		Landscape (Not support to the portrait installation)	
Tilting Angle*1	0-20 degrees forward with landscape setting		0-20 degrees forward with landscape setting	
Operating Environment	Temperature: 0 °C to 40 °C (32 °F to 104 °F) for up to 1400 m (4593 ft) altitude/ 0 °C to 35 °C (32 °F to 95 °F) for between 1400 m to 2800 m (4593 ft to 9186 ft) altitude Humidity: 20 % to 80 % (No Condensation), Altitude: lower than 2800 m		Temperature: 0 °C to 40 °C (32 °F to 104 °F) for up to 1400 m (4593 ft) altitude/ 0 °C to 35 °C (32 °F to 95 °F) for between 1400 m to 2800 m (4593 ft to 9186 ft) altitude Humidity: 20 % to 80 % (No Condensation), Altitude: lower than 2800 m	
Storage Environment	Temperature: -20 °C to 60 °C (-4 °F to 140 °F), Humidity: 20 % to 80 % (No Condensation)		Temperature: -20 °C to 60 °C (-4 °F to 140 °F), Humidity: 20 % to 80 % (No Condensation)	
Operating Time*2	24 h/day		16 h/day	

*1: Please contact your sales representative with regard to the tilt angle before installation.

*2: In case of long time, the moving image is recommended to be displayed. If you display a still picture for an extended period, the image retention might remain on the screen. However, image retention can gradually disappear by displaying a moving images.

★Excluding remote control receiver.

CQE1 Series



Released in the second quarter of 2021



Model no.	TH-55CQE1	TH-49CQE1	TH-43CQE1
Screen Size (Diagonal)/Aspect Ratio	55-inch (1387.8 mm)/16:9	49-inch (1232.0 mm)/16:9	43-inch (1079.8 mm)/16:9
Backlight	Direct LED	Direct LED	Direct LED
Effective Display Area (W x H)	1209.6 x 680.4 mm (47.62" x 26.78")	1073.8 x 604.0 mm (42.47" x 23.77")	941.1 x 529.4 mm (37.05" x 20.84")
Resolution (H x V)	3840 x 2160	3840 x 2160	3840 x 2160
Brightness (Typ)	400 cd/m ²	400 cd/m ²	400 cd/m ²
Contrast Ratio	1300:1	1200:1	1200:1
Dynamic Contrast Ratio	50000:1	50000:1	50000:1
Response Time	6.0 ms (G to G)	8.0 ms (G to G)	8.0 ms (G to G)
Viewing Angle (Horizontal/Vertical)	178°/178° (CR>10)	178°/178° (CR>10)	178°/178° (CR>10)
Panel Surface Treatment	Anti-Glare Low Reflection (Haze 3%)	Anti-Glare (Haze 1 %)	Anti-Glare (Haze 1 %)
HDMI In	HDMI TYPE A Connector x 4 (HDCP 2.2)		HDMI TYPE A Connector x 4 (HDCP 2.2)
USB	USB Connector (TYPE-A) x 2, (Type-C) x 1, Internal (Type-A) x 1		USB Connector (TYPE-A) x 2, (Type-C) x 1, Internal (Type-A) x 1
PC In	Mini D-sub 15-pin x 1 (Female)		Mini D-sub 15-pin x 1 (Female)
Audio In (L/R)	Pin Jack (L/R) x 1		Pin Jack (L/R) x 1
Audio Out	Stereo Mini Jack (M3) x 1, SPDIF x 1		Stereo Mini Jack (M3) x 1, SPDIF x 1
Serial In	D-sub 9-pin x 1 (Female), RS-232C Compatible		D-sub 9-pin x 1 (Female), RS-232C Compatible
LAN	RJ45 x 1		RJ45 x 1
IR In	Stereo Mini Jack (M3) x 1		Stereo Mini Jack (M3) x 1
Wi-Fi	Built-in, IEEE 802.11. a/b/g/n/ Dual Wi-Fi CERTIFIED		Built-in, IEEE 802.11. a/b/g/n/ Dual Wi-Fi CERTIFIED
Power Requirements	220-240 V AC, 50 Hz/60 Hz	220-240 V AC, 50 Hz/60 Hz	220-240 V AC, 50 Hz/60 Hz
Power Consumption	135 W	115 W	111 W
Power Off Condition	0 W	0 W	0 W
Stand-by Condition	Approx. 0.5 W	Approx. 0.5 W	Approx. 0.5 W
Dimensions (W x H x D) *	1239 x 712 x 87 mm (48.75" x 28.02" x 3.43")	1102 x 635 x 85 mm (43.3" x 24.98" x 3.35")	966 x 558 x 86 mm (38.01" x 21.94" x 3.39")
Carton Size (W x H x D)	1369 x 874 x 165 mm (53.90" x 34.41" x 6.50")	1215 x 775 x 165 mm (47.84" x 30.52" x 6.50")	1050 x 718 x 178 mm (41.34" x 28.27" x 7.01")
Bezel Width	12.3 mm (0.48") (T/R/L), 15.1 mm (0.59") (B)	11 mm (0.43") (T/R/L), 14.4 mm (0.57") (B)	9.6 mm (0.38") (T/R/L), 13.2 mm (0.52") (B)
Weight	Approx. 16.2 kg (35.8 lbs.)	Approx. 12.6 kg (27.8 lbs.)	Approx. 9.9 kg (21.9 lbs.)
Gross Weight	Approx. 22.0 kg (48.5 lbs.)	Approx. 17 kg (37.5 lbs.)	Approx. 14 kg (30.9 lbs.)
Pitch for Wall-Hanging	VESA Compliant 400 x 200 mm (15.8" x 7.9")	VESA Compliant 200 x 200 mm (7.9" x 7.9")	VESA Compliant 200 x 200 mm (7.9" x 7.9")
Built-in Speaker	16 W [8 W + 8 W]	16 W [8 W + 8 W]	16 W [8 W + 8 W]
Orientation	Landscape (Not support to the portrait installation)		Landscape (Not support to the portrait installation)
Tilting Angle ^{*1}	0-20 degrees forward with landscape setting		0-20 degrees forward with landscape setting
Operating Environment	Temperature: 0 °C to 40 °C (32 °F to 104 °F) for up to 1400 m (4593 ft) altitude/ 0 °C to 35 °C (32 °F to 95 °F) for between 1400 m to 2800 m (4593 ft to 9186 ft) altitude Humidity: 20 % to 80 % (No Condensation), Altitude: lower than 2800 m		Temperature: 0 °C to 40 °C (32 °F to 104 °F) for up to 1400 m (4593 ft) altitude/ 0 °C to 35 °C (32 °F to 95 °F) for between 1400 m to 2800 m (4593 ft to 9186 ft) altitude Humidity: 20 % to 80 % (No Condensation), Altitude: lower than 2800 m
Storage Environment	Temperature: -20 °C to 60 °C (-4 °F to 140 °F), Humidity: 20 % to 80 % (No Condensation)		Temperature: -20 °C to 60 °C (-4 °F to 140 °F), Humidity: 20 % to 80 % (No Condensation)
Operating Time ^{*2}	16 h/day		16 h/day

*1: Please contact your sales representative with regard to the tilt angle before installation.

*2: In case of long time, the moving image is recommended to be displayed. If you display a still picture for an extended period, the image retention might remain on the screen. However, image retention can gradually disappear by displaying a moving images.

★Excluding remote control receiver.

▶ Entry

Standard equipped with an abundance of terminals. Optimal as a conference room

The CQE1 Series is equipped with four HDMI input terminals. USB type-A and Type-C. It is also equipped with Wi-Fi, and can conduct wireless transmission with a PC. Display Internet-based information and smoothly alternate presenters during a meeting.



Preinstalled HTML5 Browser Allows for Easy Signage Updates

The CQE1 series is preinstalled with the Android-based HTML5 browser. So, it can serve as signage using a without an external device, such as a set-top box or PC, or without a connection cable.



Elaborate 4K Picture Quality down to the Tiniest Details

SQ1HSQ1SQE1CQE1

With approximately 8,290,000 pixels, about four times the pixels of a Full-HD display, images are highly detailed. This dynamic, large-screen display achieves true-to-life finely nuanced images. With an optimal viewing distance of 1.5 times the screen height, the 4K display renders the information you want to transmit with excellent clarity.



* Images are simulated.

Supports HDR and BT.2020 Emulation

SQ1HSQ1

The SQ1H, and SQ1 Series supports HDR (High Dynamic Range) (PQ and HLG). Image reproduction is stunning, from deepest black to sparkling bright highlights. Additionally, they have emulation mode for BT.2020. This enables an emulation display to support the wide color gamut of the ITU-R BT.2020 standard.

Supports the Next-Generation Intel® SDM Specification Slot Standard

SQ1HSQ1SQE1

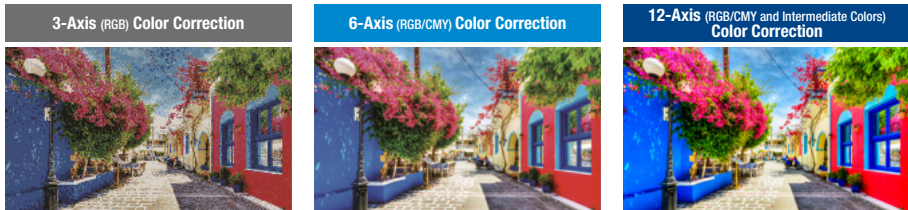
The SQ1H/SQ1/SQE1 Series is equipped with the new Intel® SDM specification slot standard that supports 4K signals. Combined with the interface board, you can easily use a built-in PC and add various interfaces.



High Color Reproduction (6-Axis & 12-Axis Color Correction)

SQ1HSQ1

The color space on LCD displays tends to narrow when the luminance level drops, and it's often accompanied by color phase shifts. Six Axis Coordinate Correction applies image processing to balance the six axes of the three primary colors (RGB) and their complementary colors (CMY). Further, in the SQ1 Series, the color temperature, shade, and brightness parameters of individual images can be adjusted for red, green, and blue, and their complementary colors, cyan, magenta, and yellow. This keeps the intermediate shades of extremely fine colors vibrant and lifelike.

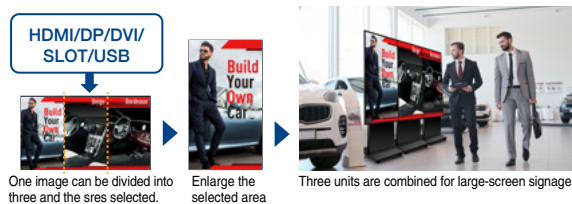


* Images are simulated.

Dynamic Signage is Possible with the Portrait Zoom

SQ1HSQ1

Split the content from image sources, and enlarge the display in a portrait orientation. There is no need to use a special device, such as a processor, while creating content from various images. Placing three 65-inch models vertically creates a display equivalent to 112 inches. This enables highly visible store signage.



* The picture quality may be degraded when the image is enlarged.

*These functions on the 98/86SQ1 models are compatible with the Software Main Version 3.0000 or later.

Easy Display of Images Optimized for the Display Content

SQ1HSQ1

Conventional display panels are preset with display modes such as Standard and Dynamic. The SQ1H, and SQ1 Series comes with an extensive display menu to let you select the most suitable mode for the content to be displayed and the viewing environment. You can select the best mode for the video source and the place of display.



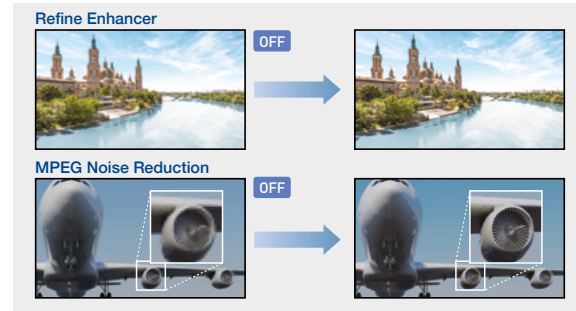
*Although the term "DICOM" is used, this product is not medical equipment. Do not use displayed images for medical purposes such as examination or diagnosis.

•Refine Enhancer

Corrects blurry image contours resulting from resizing, etc., to improve the image resolution.

•MPEG Noise Reduction

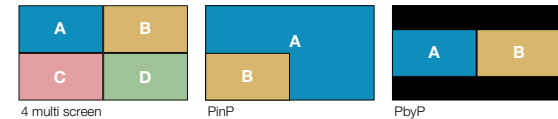
Noise reduction suppresses the block noise and mosquito noise that are characteristic of digital video signals. This faithfully reproduces the inherent beauty of the image.



Multi Input Screen Capability with No Processor Required

SQ1HSQ1

Multi Input Screen Capability with No Processor Required The SQ1 Series can simultaneously display multiple images on a single screen. In addition to 4 multi screens, the SQ1H, and SQ1 Series can display 2 screens, such as PinP and PbyP. This is ideal for checking details in various applications, such as videoconferences, digital signage, and surveillance monitoring.



Brilliant, High-Quality over 1200 cd/m² Images for Bright Lobbies

SQ1H

The SQ1H Series provides highly visible signage even in open spaces with natural lighting. An ADS panel with a wide viewing angle is used, and it has an eye-catching effect even when people are moving.

*TH-86SQ1H. TH-75SQ1H is 1500cd/m².



Portrait Installation Capability

* Expect the CQE1 Series.

When the Large size display is installed vertically, it can display a person in almost life-size dimensions. It is ideal for digital signage use because it faithfully reproduces the textures and colors of a model's clothing and accessories. It helps to maintain a high-quality brand image. Vertical installation also has no effect on the lifetime of the panel.



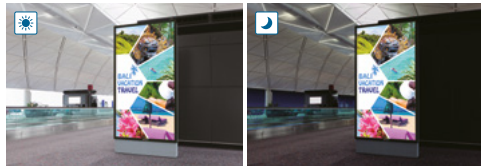
Efficiency and Reliability for Continuous 24-hour Operation

SQ1H SQ1 SQE1 CQE1

*98CQE1 only

The use of highly durable panel materials and quality electronic components ensures dependable 24-hour operation seven days a week.

* Display of moving images is recommended when panels are in use for long periods to prevent image retention. Note that image burn-in can be gradually rectified with the periodical display of moving images.



A Stylish and slim design Accentuates the Image

SQ1H SQ1

The stylish and slim design complies with the ADA standard (a depth of less than 4-inch (approx.100 mm) with brackets) in all important aspects. The narrow bezel displays higher-impact images, further enhancing the 4K picture quality. The slim profile isn't the least oppressive even when installed in a hanging configuration.

* The availability of the TY-WK98PV1 varies depending on the country.



* ADA stands for the "Americans with Disabilities Act," a United States law made to protect people with disabilities from discrimination.

Fanless Design

SQ1 SQE1 CQE1

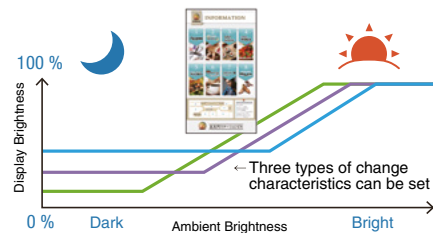
Standard models robust fanless design prevents problems caused by the intake of dusty air. The displays can be safely installed and operated in high-traffic environments.

Operate without wasting electricity with the Automatic Brightness Adjustment function

SQ1H

Automatically adjusts the brightness of the screen display according to the surrounding environment. The brightness changes linearly so there is no feeling of discomfort.

*The images are graph are for illustration purposes only. It may be different from the actual brightness change.

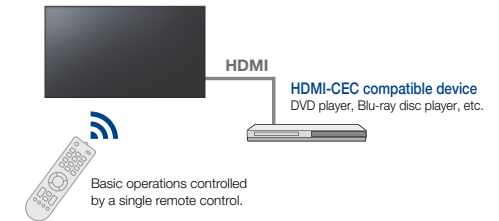


HDMI CEC Device Linking Supported

SQ1H SQ1 SQE1 CQE1

HDMI-CEC compatible devices can be connected to the display by an HDMI cable, enabling the basic operations (such as power ON/OFF) of the compatible devices to be controlled by the display's remote control. Power ON/OFF of the display can also be switched using only the remote control (or main unit buttons) of the HDMI-CEC compatible devices.

* The control of all devices cannot be guaranteed.



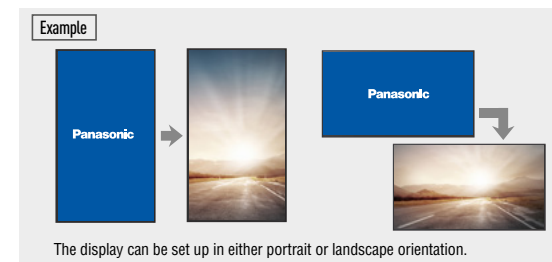
Customizable Original Screen

SQ1H SQ1 SQE1 CQE1

An original image created by your company or other desired picture can be displayed when the unit is turned on and when there is no input signal. The image data for the original screen can be transferred and stored in the display unit via a USB memory. This function allows a company logo mark, brand image, etc., to be displayed when there is no input signal.

• Certain limitations apply to the format for original screen.

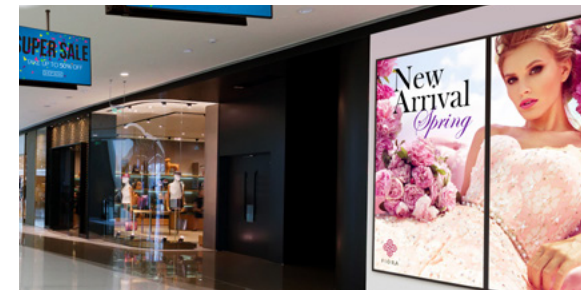
* The SQ1/SQE1/CQE1 Series is compatible with 3480 x 2160 and 1920 x 1080 resolution.



4K Daisy Chain can be Constructed with Even Higher Resolution Multi-Screens

SQ1H SQ1

The SQ1 Series is equipped with DisplayPort input/output terminals. Construct a multi-screen that can output 4K images by installing multiple units and connecting them in a daisy chain.

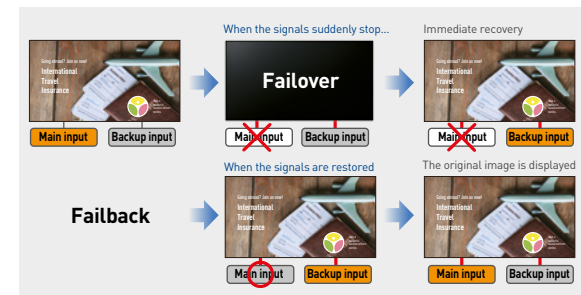


Failover and Failback Safeguards for Mission Critical Situations

SQ1H SQ1

These models are equipped with a variety of signal input terminals. If the main video and audio signals are interrupted, the system immediately switches to alternative signals. This makes it ideal for mission critical control rooms and surveillance centers. If the main signals are restored, the original image is displayed.

* The usable combinations of main and backup signals are limited. For details, see the product website.



Simple Signage Operation with No STB

SQ1H

SQ1

SQE1

CQE1

The display can automatically start showing pictures when a USB memory containing data is inserted. The display unit can be used as digital signage without a set-top box or PC. And the content can be displayed smoothly without including the black screen display. What's more, the order of content playback and playback time can be programmed. Content can also be rewritten and multiple displays can be operated via LAN.*

- If it is difficult to insert a USB memory due to installation conditions, use a commercially available extension cable.
- Some files cannot be played back even if they are in the supported format. Regarding restrictions, see the operation manual.
- * Multi Monitoring & Control Software (free) is required.

Applicable format

Still Image	JPG, JPEG, JPE, BMP*
Motion Image	AVI, MKV, ASF, WMV, TS, MTS, MP4, 3GP, MOV, FLV, F4V

* BMP is supported only by the SQE1, CQE1 Series.
* The SQ1H/SQ1/SQE1/CQE1 Series is compatible with the 4K signal.

Playback by one unit

Simultaneous playback by multiple units

One of up to four display units becomes the parent unit, and the other units display images in sync with the parent unit. This enables the display of images in perfect sync when the panels are arranged next to each other.

Play USB Content Instantly

SQ1H

SQ1

SQE1

CQE1

Playing Full HD video, still images, and digital documents from USB storage devices couldn't be easier. Just insert a thumb drive into the USB port and start presenting without needing to connect a PC. The Memory Viewer app enables image* (JPEG, BMP) and video* (WMV, AVI, MOV, MP4, MPG) selection from handy thumbnail previews.

- * In some cases, files may not be viewable even if they are encoded in a supported format.

Applicable format

Still Image	JPG, JPEG, JPE, BMP
Motion Image	AVI, MKV, ASF, MWV, GS, MGS, MP4, 3GP, MOV, FLV, F4V

- * The SQE1 and CQE1 Series are not compatible with WMV, MTS and F4V.



Cloning Function Speeds Up Multiple Display Setup

SQ1H

SQ1

SQE1

CQE1

When installing multiple displays, the Cloning function lets you use a USB memory (or LAN network) to copy the settings of a parent display to other units, thus greatly shortening the setup time.

- [Date & Time], [Network Settings], [LAN Settings] and Display ID cannot be copied.
- The Cloning function works only for displays with the same screen size.

Parent Display

Copy installation data

Data that can be copied

Setting and set values of [Picture], [sound], [Setup], [Position], and [Options] menus.*

*[Options] are not supported by SQ1.

USB Memory Network Settings

SQ1H

SQ1

Using a USB memory device, the network setting can be made for multiple displays. Individual IP addresses for each unit are automatically set.

Automatically set individual IP addresses

Note: Setting images are simulated.

A Conference Room Audio Mode for Easier Listening

SQ1H

SQ1

This function makes voices easier to listen to in video conferences or when the video is displayed, for improved audio quality. A setting is also possible to improve sound muffling when the display is mounted on a wall. If the automatic sound volume adjustment function is used, information sharing is possible with the sound level at a comfortable level.

- * This function on the 98/86SQ1 Series is compatible with the Software Main Version 4.0000 or later. Please contact your sales representative with regard to details.

Make Your Signage Easy with Panasonic Application

SQ1

The SQ1H, SQ1 Series features a USB Media Player function that allows easy signage playback. Content Management Software is an application software for scheduling digital signage playback on a computer. It also allows power ON/OFF to be set.

For more information about Content Management Software Version 3.3.1, please visit:
<https://panasonic.net/cns/prodisplays/download/software/>

Play Content Automatically with Scheduling Function

Content Management Software for PC Version 3.3.1 (free) enables easy playlist creation with media support including combinations of still and video images. You can set up schedules for playing and closing your media playlist at predetermined dates and times.

Power On 9:00 AM 12:00 PM 7:00 PM Power Off

Playlist 1

Playlist 2

Playlist 3

Video

Video + Still

Still

Convenient Playlist and Schedule Syncing

Playlists and schedules created with Content Management Software can be transferred to displays with USB memory, or via LAN. Synchronized playback on multiple displays is also supported.

Create playlist

Playback via USB memory

Delivered via LAN

Synchronized playback available!

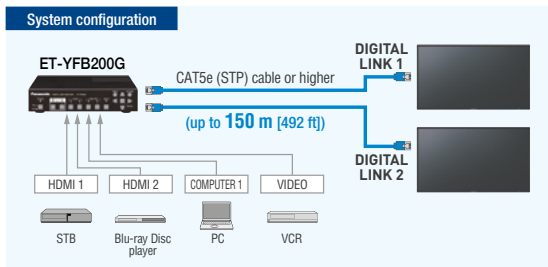
DIGITAL LINK Function Enables Simple Installation and Low System Costs

SQ1H

SQ1

Using DIGITAL LINK makes it possible to transmit video, audio and control signals over a long distance (up to 150 m [492 ft]) with a single LAN cable*. Easy cabling also reduces labor during setup. This provides transmission of high-quality images and sounds, as well as remote control.

* When connected with the [Long reach] mode, the maximum transmission distance is 150 m (492 ft). In this case, the unit can receive the signals of up to 1080/60p. A CAT5e (STP) cable or higher is required. This supports 4K video over distances of up to 50 m (164 ft) with a single LAN cable.



Timer-Programmable Switching of Device Connection

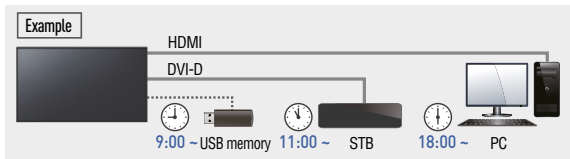
SQ1H

SQ1

SQE1

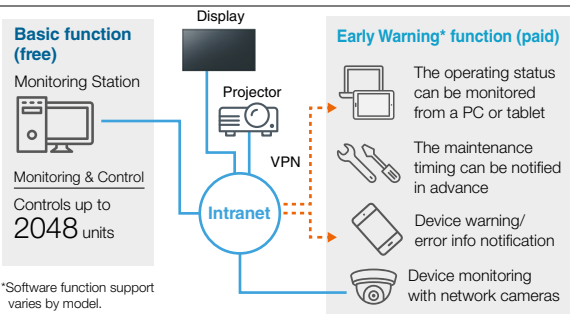
CQE1

The timer function of the display unit can be used to change connected signal source devices at a desired time. This allows an easy change of displayed content according to the application or the progress of an event.



Multi Monitoring & Control Software

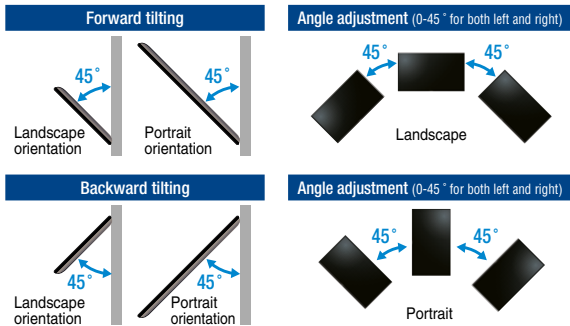
Compatible with Multi Monitoring & Control Software for addition of new functions, such as automatic searching for map displays and registered devices. Displays and peripheral equipment on the intranet can be controlled and their status can be monitored. Also error notification and error indication can be detected by an indication monitoring function (for a fee) for improved maintenance.



Choose the Installation to Match Your Application

Panasonic displays are designed for use in either portrait or horizontal orientation with no effect on panel color and lifespan, further reducing TCO. A tilt installation up to 45 degrees forward or backward is also possible. The angle can be adjusted for easy viewing when installed in a high location.

* The installable angle varies depending on the model. For details, see the specifications page for each model. For more information on the specifications page, please visit the download page. (https://panasonic.net/cns/prodisplays/download/spec_manual/)



Smooth Switching of Presenters

SQ1H

SQ1

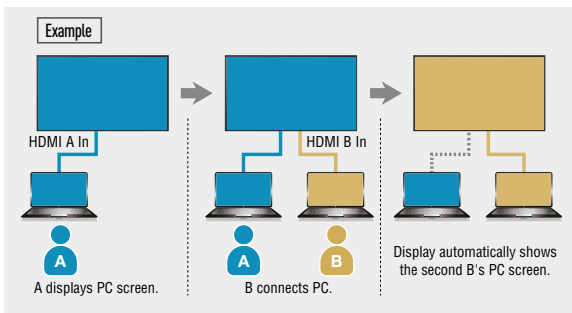
SQE1

CQE1

These displays automatically switches source signals when the input signal for the current content stops or when an input signal other than the signal of the current content is received. When presenters change during a meeting, the displayed image can be switched easily by simply changing the cable connection, thus eliminating the need to operate the remote control.

* The 2 switching inputs must be set in advance.
* This function may not operate correctly depending on the image playback device.
* Digital-digital switching is supported by the SQ Series.

★ Input signal detection is possible for HDMI 1 and HDMI 2 only with the SQE1 and CQE1 Series.



Built-in Speakers for the Playback of Content with Sound

All models are supported

The display unit has built-in speakers so that it can playback content with sound without the connection of external speakers. This allows maximum use of a limited space for the installation of a large-screen display



Supports LAN Content Connection

SQ1H

SQ1

SQE1

CQE1

The display can be controlled by LAN or RS-232C. You can configure the display into your existing control system, and can control several devices simultaneously. It also supports AMX or Crestron Connected™ LAN control.



SQ1-IG Series

Interactive Multi-Touch
Professional Displays
With InGlass™ Touch
Technology



Multi-Touch Screen

Model no.	TH-86SQ1-IG	TH-75SQ1-IG	TH-65SQ1-IG	TH-55SQ1-IG
Screen Size / Aspect Ratio	86-inch [2174 mm]	75-inch [1892 mm]	65-inch [1638 mm]	55-inch [1387 mm]
Panel Type	IPS / Edge-LED		IPS / Edge-LED	
Effective Display Area (W x H)	1895 x 1065 mm [74.6" x 41.9"]	1649 x 927 mm [64.9" x 36.5"]	1428 x 803 mm [56.2" x 31.6"]	1209 x 680 mm [47.6" x 26.7"]
Resolution (H x V)	3840 x 2160		3840 x 2160	
Brightness (Typ)*	500 cd/m2		500 cd/m2	
Contrast Ratio	1200:1		1100:1	
Response Time	8.0 ms [Typ] [G to G]		8.0 ms [Typ] [G to G]	
Viewing Angle (Horizontal/Vertical)	178°/178° [CR≥10]		178°/178° [CR≥10]	
Panel Surface Treatment*	Anti-Glare		Anti-Glare	
Detection Method	InGlass™ Touch Detection of human finger, passive and active stylus		InGlass™ Touch Detection of human finger, passive and active stylus	
Touch Operation	Real multi-touch up to 20 touches		Real multi-touch up to 20 touches	
Touch Method	Finger; Gloves; Stylus (≥ 2 mm)		Finger; Gloves; Stylus (≥ 2 mm)	
Response Time [ms]	≤ 15		≤ 15	
OS	Windows (7/8.1/10), Mac [OS X10.10/10.11, macOS Sierra], Linux, Android		Windows (7/8.1/10), Mac [OS X10.10/10.11, macOS Sierra], Linux, Android	
VIDEO In	-		-	
Audio In(L/R)	-		-	
HDMI In	HDMI Type A Connector x 2 (HDCP 2.2)		HDMI Type A Connector x 2 (HDCP 2.2)	
Component/RGB In	-		-	
DisplayPort In	DisplayPort x 1 (HDCP2.2 supported)		DisplayPort x 1 (HDCP2.2 supported)	
DisplayPort Out	DisplayPort x 1 (HDCP1.4 supported)		DisplayPort x 1 (HDCP1.4 supported)	
DVI-D In/Audio In (L/R)	DVI-D 24-pin x 1/Stereo Mini Jack [M3] x 2 [Shared with PC In]		DVI-D 24-pin x 1/Stereo Mini Jack [M3] x 2 [Shared with PC In]	
PC In/Audio In (L/R)	Mini D-sub 15-pin x 1 [Female]/Stereo Mini Jack [M3] x 2 [Shared with DVI-D In]		Mini D-sub 15-pin x 1 [Female]/Stereo Mini Jack [M3] x 2 [Shared with DVI-D In]	
Audio In (L/R)	Stereo Mini Jack [M3] x 1		Stereo Mini Jack [M3] x 1	
USB	USB Type A Connector x 1, DC 5 V/2 A (USB 3.0 supported.)		USB Type A Connector x 1, DC 5 V/2 A (USB 3.0 supported.)	
USB for PC Connection	Direct Cable USB TYPE A Connector (male) x 1 [For Touch Panel] DC 5 V/500 mA		Direct Cable USB TYPE A Connector (male) x 1 [For Touch Panel] DC 5 V/500 mA	
Serial In	D-sub 9pin x 1, RS-232C Compatible		D-sub 9pin x 1, RS-232C Compatible	
DIGITAL LINK	RJ45 x 1, 100BASE-TX, Compatible with PLink™ Long Reach Mode		RJ45 x 1, 100BASE-TX, Compatible with PLink™ Long Reach Mode	
LAN	RJ45 x 1, 10BASE-T / 100BASE-TX, Compatible with PLink™		RJ45 x 1, 10BASE-T / 100BASE-TX, Compatible with PLink™	
Function Slot	x1 [Intel® SDM specification SDM-S / SDM-L]		x1 [Intel® SDM specification SDM-S / SDM-L]	
Power Requirements	110-127 / 220-240 V AC, 50/60 Hz		110-127 / 220-240 V AC, 50/60 Hz	
On-mode Average Power Consumption	254.5	385 TBD	321.5	301.5
Power off Condition	Approx. 0.3 W		Approx. 0.3 W	
Stand-by Condition	Approx. 0.5 W		Approx. 0.5 W	
Dimensions (W x H x D)	1967 x 1138 x 86 mm	1720 x 999 x 73 mm	1498 x 875 x 82 mm	1280 x 753 x 62 mm
Carton Size	2224 x 1427 x 373 mm	1832 x 1283 x 280 mm	1655 x 1078 x 280 mm	1365 x 864 x 185 mm
Weight	Approx. 96 kg	Approx. 79 kg	Approx. 53 kg	Approx. 55 kg
Gross Weight	Approx. 119 kg	Approx. 94 kg	Approx. 64 kg	Approx. 64 kg
Pitch for Wall-Hanging	VESA Compliant 600 x 400 mm [23.6" x 15.8"]		VESA Compliant 600 x 400 mm [23.6" x 15.8"]	
Protective Glass Thickness	3 mm		3 mm	
Bezel Width	T-L-R: 19.1 mm		T-L-R: 19.1 mm	
Built-in Speaker	20 W [10 W + 10 W]		20 W [10 W + 10 W]	
Orientation	Landscape / Portrait		Landscape / Portrait	
Tilting Angle	0-20 degrees forward / backward *1		0-45 degrees forward / backward *1	
Operating Environment	Temperature: 0° to 40°C (for up to 1400 m altitude)		Temperature: 0° to 40°C (for up to 1400 m altitude)	
Storage Environment	Humidity: 20% to 80% [No condensation] Altitude: 0 to 2800 m		Humidity: 20% to 80% [No condensation] Altitude: 0 to 2800 m	
Operating Time*3	24 h/day		24 h/day	
Video Wall Manager compatible	Yes		Yes	
SNMP Support	Ver. 3.0		Ver. 3.0	
Content Management Software	Ver. 3.0 or later.Windows only		Ver. 3.0 or later.Windows only	
Multi Monitoring & Control Software	Ver. 2.1 Windows only		Ver. 2.1 Windows only	
Early Warning Software	ET-SWA100 Series		ET-SWA100 Series	
Whiteboard Software*4	Flatfrog Whiteboard Software Downloadable for free *3		Flatfrog Whiteboard Software Downloadable for free *3	

*1: Please contact your sales representative with regard to the tilt angle before installation.

*2: In case running for a long time, the moving image is recommended to be displayed.

If you display a still picture for an extended period, the image retention might remain on the screen. However, image retention can gradually disappear by displaying a moving images.

*3: Downloadable for free. For more information, please visit Global website. <https://panasonic.net/cns/prodisplays/download/software/>

SQE1-IG Series

Interactive Multi-Touch
Professional Displays
With InGlass™ Touch
Technology



Multi-Touch Screen

Model no.	TH-86SQE1-IG	TH-75SQE1-IG	TH-65SQE1-IG	TH-55SQE1-IG
Panel size	86-inch (2174,2 mm)	75-inch (1893,7 mm)	65-inch (1638,9 mm)	55-inch (1387,8 mm)
Backlight	E-LED	D-LED	D-LED	
Aspect Ratio	16:9	16:9	16:9	16:9
Effective Display Area (W x H)	1895 x 1065,9 mm [74.6" x 41.96"]	1649,6 x 927,9 mm [64.94" x 36.53"]	1428,4 x 803,5 mm [56.23" x 31.63"]	1209,6 x 680,4 mm [47.62" x 26.78"]
Resolution (H x V)	3840 x 2160		3840 x 2160	
Brightness [Typ]*	500 cd/m2		500 cd/m2	
Contrast Ratio	1200:1		1200:1	
Response Time	8.0 ms [Typ] (G to G)		8.0 ms [Typ] (G to G)	
Viewing Angle (Horizontal/Vertical)	178°/178° (CR≥10)		178°/178° (CR≥10)	
Panel Surface Treatment*	Anti-glare, anti-reflective with the level of haze approx. 5% (±3%)		Anti-glare, anti-reflective with the level of haze approx. 5% (±3%)	
Detection Method	InGlass™ Touch Detection of human finger, passive and active stylus		InGlass™ Touch Detection of human finger, passive and active stylus	
Touch Operation	Up to 20-point multi-touch		Up to 20-point multi-touch	
Power supply	12-24 V / 1 A external		12-24 V / 1 A external	
OS	Win 7/8/10, Android, Mac OS*, Linux		Win 7/8/10, Android, Mac OS*, Linux	
HDMI In	HDMI Type A Connector x 4		HDMI Type A Connector x 4	
DisplayPort In	DisplayPort x 1		DisplayPort x 1	
DisplayPort Out	DisplayPort x 1		DisplayPort x 1	
PC In	Mini D-sub 15-pin x 1		Mini D-sub 15-pin x 1	
Serial	D-sub 9pin x 1, RS-232C Compatible		D-sub 9pin x 1, RS-232C Compatible	
IR In	Stereo Mini jack (M3) x 1		Stereo Mini jack (M3) x 1	
Audio In	Pin Jack (L/R) x 2		Pin Jack (L/R) x 2	
Audio Out	Stereo Mini jack (M3) x 1, SPDIF x 1		Stereo Mini jack (M3) x 1, SPDIF x 1	
USB	USB Connector Type-A x 2, Type-C x 1 (Internal) Type-A x 1		USB Connector Type-A x 2, Type-C x 1 (Internal) Type-A x 1	
Slot	x1 (Intel® SDM specification, Corresponding size SDM-S / SDM-L, 12V x max. 3.5A)		x1 (Intel® SDM specification, Corresponding size SDM-S / SDM-L, 12V x max. 3.5A)	
LAN	RJ45 x 1		RJ45 x 1	
Power Requirements	110-127 V AC, 50/60 Hz, 220-240 V AC, 50/60 Hz		110-127 V AC, 50/60 Hz, 220-240 V AC, 50/60 Hz	
Power consumption	max. 371 W [319 W]*2		max. 288 W [236 W]*2	
Power off Condition	0 W		0 W	
Stand-by Condition	Approx. 0.5 W		Approx. 0.5 W	
Wifi	Dongle type	Built-in	Built-in	Built-in
Dimensions (W x H x D)	TBD	TBD	TBD	TBD
Carton Size	TBD	TBD	TBD	TBD
Weight	TBD	TBD	TBD	TBD
Gross Weight	TBD	TBD	TBD	TBD
Wall-hanging pitch	VESA Compliant 600 x 400 mm [23.6" x 15.8"], M8		VESA Compliant 400 x 400 mm [15.8" x 15.8"], M6	VESA Compliant 400 x 200 mm [15.8" x 7.9"], M6
Protective Glass Thickness	3 mm		3 mm	
Bezel Width	TBD	TBD	TBD	TBD
Built-in Speaker	24 W [12 W + 12 W]		16 W [8 W + 8 W]	
Orientation	Landscape / Portrait		Landscape / Portrait	
Tilting Angle*3	Landscape setting: 0 - 20 degrees forward, Portrait setting: 0 - 20 degrees forward		Landscape setting: 0 - 20 degrees forward, Portrait setting: 0 - 20 degrees forward	
Operating Environment	Temperature: 0° to 40°C [32 °F to 104 °F] / Humidity: 20-80% (Non condensation) / for up to 0-1400 m (4593 ft) altitude. Temperature 0 °C to 35 °C [32 °F to 95 °F]		Temperature: 0° to 40°C [32 °F to 104 °F] / Humidity: 20-80% (Non condensation) / for up to 0-1400 m (4593 ft) altitude. Temperature 0 °C to 35 °C [32 °F to 95 °F]	
Operating Time*4	Altitude 1400-2800 m [4593 ft to 7874 ft]		Altitude 1400-2800 m [4593 ft to 7874 ft]	
Operating Time*4	24 h/day		24 h/day	
SNMP Support	Ver. 3.0		Ver. 3.0	
Multi Monitoring & Control Software	Ver. 3.1 Windows only		Ver. 3.1 Windows only	
Early Warning Software	ET-SWA100 Series		ET-SWA100 Series	
Whiteboard Software*5	Downloadable for free - for Windows and Mac OS		Downloadable for free - for Windows and Mac OS	

*1: Limited performance.

*2: When the slot is not in use.

*3: When installing the display vertically, be sure that the power indicator comes to the right side. Please contact your sales representative with regard to the tilt angle before installation.

*4: In case running for a long time, the moving image is recommended to be displayed.

If you display a still picture for an extended period, the image retention might remain on the screen. However, image retention can gradually disappear by displaying a moving images.

*5: Downloadable for free. For more information, please visit Global website. <https://panasonic.net/cns/prodisplays/download/software/whiteboard/>

For the latest information about Panasonic Professional Displays, please visit:
business.panasonic.co.uk/visual-system

SQE1-IR Series

Interactive Multi-Touch
Professional Displays
With Infrared Touch
Technology



Multi-Touch Screen

Model no.		TH-86SQE1-IR	TH-75SQE1-IR	TH-65SQE1-IR	TH-55SQE1-IR
DISPLAY PANEL	Panel size	86-inch (2174,2 mm)	75-inch (1893,7 mm)	65-inch (1638,9 mm)	55-inch (1387,8 mm)
	Backlight	E-LED	D-LED		D-LED
	Aspect Ratio	16:9		16:9	
	Effective display area (W × H)	1895 × 1065,9 mm [74.6" × 41.96"]	1649,6 × 927,9 mm [64.94" × 36.53"]	1428,4 × 803,5 mm [56.23" × 31.63"]	1209,6 × 680,4 mm [47.62" × 26.78"]
	Resolution (H × V)	3840 × 2160		3840 × 2160	
	Brightness [Typ]*	500 cd/m2		500 cd/m2	
	Contrast Ratio	1200:1		1200:1	
	Response Time	8.0 ms [Typ] (G to G)		8.0 ms [Typ] (G to G)	
	Viewing Angle [IT/B]/[L/R]	178°/178° [CR≥10]		178°/178° [CR≥10]	
	Panel Surface Treatment*	TBD		TBD	
TOUCH	Detection Method	Infrared Blocking Detection Method		Infrared Blocking Detection Method	
	Touch Operation	Up to 20-point multi-touch		Up to 20-point multi-touch	
	Power Supply	USB 5V / 300mA		USB 5V / 300mA	
	OS	Win 7/8/10, Android, Linux		Win 7/8/10, Android, Linux	
TERMINAL	HDMI In	HDMI Type A Connector × 4		HDMI Type A Connector × 4	
	DisplayPort In	DisplayPort × 1		DisplayPort × 1	
	DisplayPort Out	DisplayPort × 1		DisplayPort × 1	
	PC In	Mini D-sub 15-pin × 1		Mini D-sub 15-pin × 1	
	Serial	D-sub 9pin × 1, RS-232C Compatible		D-sub 9pin × 1, RS-232C Compatible	
	IR In	Stereo Mini jack (M3) × 1		Stereo Mini jack (M3) × 1	
	Audio In	Pin Jack (L/R) × 2		Pin Jack (L/R) × 2	
	Audio Out	Stereo Mini jack (M3) × 1, SPDIF × 1		Stereo Mini jack (M3) × 1, SPDIF × 1	
	USB	USB Connector Type-A × 2, Type-C × 1 (Internal) Type-A × 1		USB Connector Type-A × 2, Type-C × 1 (Internal) Type-A × 1	
	Slot	× 1 (Intel® SDM specification, Corresponding size SDM-S / SDM-L, 12V × max. 3.5A)		× 1 (Intel® SDM specification, Corresponding size SDM-S / SDM-L, 12V × max. 3.5A)	
GENERAL	LAN	RJ45 × 1		RJ45 × 1	
	Power Requirements	110-127 V AC, 50/60 Hz, 220-240 V AC, 50/60 Hz		110-127 V AC, 50/60 Hz, 220-240 V AC, 50/60 Hz	
	Power Consumption	max. 366 W [314 W]*1	max. 336 W [282 W]*1	max. 283 W [231 W]*1	max. 199 W [145 W]*1
	Power off Condition	0 W		0 W	
	Stand-by Condition	Approx. 0.5 W		Approx. 0.5 W	
	Wifi	Dongle type	Built-in	Built-in	Built-in
	Dimensions (W × H × D)	TBD	TBD	TBD	TBD
	Carton Size	TBD	TBD	TBD	TBD
	Weight	TBD	TBD	TBD	TBD
	Gross Weight	TBD	TBD	TBD	TBD
OPTIONS	Wall-hanging pitch	VESA Compliant 600 × 400 mm [23.6" × 15.8"], M8		VESA Compliant 400 × 400 mm [15.8" × 15.8"], M6	VESA Compliant 400 × 200 mm [15.8" × 7.9"], M6
	Protective Glass Thickness	3 mm		3 mm	
	Bezel Width	TBD	TBD	TBD	TBD
	Built-in Speaker	24 W [12 W + 12 W]		16 W [8 W + 8 W]	
	Orientation	Landscape / Portrait		Landscape / Portrait	
	Tilting Angle*3	Landscape setting: 0 - 20 degrees forward, Portrait setting: 0 - 20 degrees forward		Landscape setting: 0 - 20 degrees forward, Portrait setting: 0 - 20 degrees forward	
	Operating Environment	Temperature: 0° to 40°C [32 °F to 104 °F] / Humidity: 20-80% (Non condensation) / for up to 0-1400 m (4593 ft) altitude. Temperature 0 °C to 35 °C [32 °F to 95 °F] Altitude 1400-2800 m [4593 ft to 7874 ft]		Temperature: 0° to 40°C [32 °F to 104 °F] / Humidity: 20-80% (Non condensation) / for up to 0-1400 m (4593 ft) altitude. Temperature 0 °C to 35 °C [32 °F to 95 °F] Altitude 1400-2800 m [4593 ft to 7874 ft]	
	Operating Time*4	24 h/day		24 h/day	
	SNMP Support	Ver. 3.0		Ver. 3.0	
	Multi Monitoring & Control Software	Ver. 3.1 Windows only		Ver. 3.1 Windows only	
OPTIONS	Early Warning Software	ET-SWA100 Series		ET-SWA100 Series	
	Whiteboard Software*5	Downloadable for free – for Windows		Downloadable for free – for Windows	

*1: When the slot is not in use.

*2: When installing the display vertically, be sure that the power indicator comes to the right side. Please contact your sales representative with regard to the tilt angle before installation.

*3: In case running for a long time, the moving image is recommended to be displayed. If you display a still picture for an extended period, the image retention might remain on the screen. However, image retention can gradually disappear by displaying a moving images.

For the latest information about Panasonic Professional Displays, please visit:
business.panasonic.co.uk/visual-system

CQE1-IR Series

Interactive Multi-Touch
Professional Displays
With Infrared Touch
Technology



Multi-Touch Screen

	Model no.	TH-86CQE1-IR	TH-75CQE1-IR		TH-65CQE1-IR	TH-55CQE1-IR
DISPLAY PANEL	Panel size	86-inch (2174,2 mm)	75-inch (1893,7 mm)		65-inch (1638,9 mm)	55-inch (1387,8 mm)
	Backlight	E-LED	D-LED		VA / D-LED	D-LED
	Aspect ratio	16:9			16:9	
	Effective display area (W x H)	1895 x 1065,9 mm [74.6" x 41.96"]	1649,6 x 927,9 mm [64.94" x 36.53"]		1428,4 x 803,5 mm [56.23" x 31.63"]	1209,6 x 680,4 mm [47.62" x 26.78"]
	Resolution (H x V)	3840 x 2160			3840 x 2160	
	Brightness [Typ]*	400 cd/m2			400 cd/m2	
	Contrast Ratio	1200:1	1400:1		5000:1	1300:1
	Response Time	8.0 ms [Typ] (G to G)			8.0 ms [Typ] (G to G)	
	Viewing Angle (Horizontal/Vertical)	178°/178° [CR>10]			178°/178° [CR>10]	
	Panel Surface Treatment	TBD			TBD	
TOUCH	Detection Method	Infrared Blocking Detection Method			Infrared Blocking Detection Method	
	Touch Operation	Up to 20-point multi-touch			Up to 20-point multi-touch	
	Power Supply	USB 5V / 300mA			USB 5V / 300mA	
	OS	Win 7/8/10, Android, Linux			Win 7/8/10, Android, Linux	
TERMINAL	HDMI In	HDMI Type A Connector x 4			HDMI Type A Connector x 4	
	PC In	Mini D-sub 15-pin x 1 (Female)			Mini D-sub 15-pin x 1 (Female)	
	Serial	D-sub 9pin x 1 (Female) , RS-232C Compatible			D-sub 9pin x 1 (Female) , RS-232C Compatible	
	IR In	Stereo Mini jack (M3) x 1			Stereo Mini jack (M3) x 1	
	Audio in	Pin Jack (L/R) x 2			Pin Jack (L/R) x 2	
	Audio out	Stereo Mini jack (M3) x 1, SPDIF x 1			Stereo Mini jack (M3) x 1, SPDIF x 1	
GENERAL	USB	USB Connector Type-A x 2, Type-C x 1, (Internal) Type-A x 1			USB Connector Type-A x 2, Type-C x 1, (Internal) Type-A x 1	
	LAN	RJ45 x 1			RJ45 x 1	
	Power Requirements	110-127 V AC, 50/60 Hz, 220-240 V AC, 50/60 Hz			110-127 V AC, 50/60 Hz, 220-240 V AC, 50/60 Hz	
	Power Consumption	max. 366 W	max. 309 W		max. 226 W	max. 137 W
	Power off Condition	0 W			0 W	
	Stand-by Condition	Approx. 0.5 W			Approx. 0.5 W	
GENERAL	Wifi	Dongle type	Built-in		Built-in	
	Dimensions (W x H x D)	TBD	TBD		TBD	TBD
	Carton Size	TBD	TBD		TBD	TBD
	Weight	TBD	TBD		TBD	TBD
	Gross Weight	TBD	TBD		TBD	TBD
	Wall-hanging pitch	VESA Compliant 600 x 400 mm [23.6" x 15.8"], M8			VESA Compliant 400 x 400 mm [15.8" x 15.8"], M6	VESA Compliant 400 x 200 mm [15.8" x 7.9"], M6
	Protective Glass Thickness	3 mm			3 mm	
	Bezel Width	TBD	TBD		TBD	TBD
	Built-in Speaker	24 W [12 W + 12 W]			16 W [8 W + 8 W]	
	Orientation	Landscape			Landscape	
	Tilting Angle*1	Landscape setting: 0-20 degrees forward			Landscape setting: 0-20 degrees forward	
	Operating Environment	Temperature: 0° to 40°C [32 °F to 104 °F] / Humidity: 20-80% (Non condensation) / for up to 0-1400 m (4593 ft) altitude. Temperature 0 °C to 35 °C [32 °F to 95 °F] Altitude 1400-2800 m (4593 ft to 7874 ft)			Temperature: 0° to 40°C [32 °F to 104 °F] / Humidity: 20-80% (Non condensation) / for up to 0-1400 m (4593 ft) altitude. Temperature 0 °C to 35 °C [32 °F to 95 °F] Altitude 1400-2800 m (4593 ft to 7874 ft)	
	Operating Time*2	16 h/day			16 h/day	
OPTIONS	SNMP Support	Ver. 3.0			Ver. 3.0	
	Multi Monitoring & Control Software	Ver. 3.1 Windows only			Ver. 3.1 Windows only	
	Early Warning Software	ET-SWA100 Series			ET-SWA100 Series	
	Whiteboard Software*3	Downloadable for free – for Windows			Downloadable for free – for Windows	

*1: Please contact your sales representative with regard to the tilt angle before installation.

*2: In case running for a long time, the moving image is recommended to be displayed.

If you display a still picture for an extended period, the image retention might remain on the screen. However, image retention can gradually disappear by displaying a moving images.

*3: Downloadable for free. For more information, please visit Global website.<https://panasonic.net/cns/prodisplays/download/software/whiteboard/>

For the latest information about Panasonic Professional Displays, please visit:
business.panasonic.co.uk/visual-system

Engaging Interactive Multi-Touch Displays for high efficient Team work and Digital signage

Slim and stylish design with high precision intuitive touch for collaboration & teamworks

- Wide range of sizes, from 55" to 86", to meet any space requirements.
- Multi-touch screen integrated infrared touch frame with 20 simultaneous touchpoints increases usability and participant involvement.
- Flexible installation (landscape, portrait or back-tilt 20°)
- 4k ultra HD resolution delivering the highest detail and image quality.



Built for practicality

- Created with safety and ease of use in mind, the touch screens are perfect for use in schools and other education spaces.
- The screens with IG technology are built with protection tempered anti-glare glass with only 3mm thickness.
- The larger size (75", 86") come with a handy carrying handle to ensure efficient and safe mobility.



Cost-effective collaboration

- As with all the Panasonic interactive range, the SQE1/CQE1-IR and SQ1/SQE1-IG displays can be used with the Panasonic Whiteboard Software for Windows or Mac, including a whiteboard mode, PowerPointR presentation mode – as well as Video and Screen Capture functions.
- These multi-touch displays includes a wide range of flexible functions and extended connectivity from the main SQ1/SQE1/CQE1 series.

SQ1-IG Series

Premium interactive multi-touch display – ideal for executive-level meeting rooms, collaborative spaces or interactive applications.

Ideal for:

- Meeting Rooms
- Huddle Rooms
- Showrooms
- Museums
- Exhibitions
- Higher Education
- Control rooms
- Broadcast studios
- Retail
- Signage

Key Features:

- Featuring InGlass™ reliable and stable touch technology. Gives best touch accuracy with 4K resolution.
- Up to 20/40 simultaneous touches and drags for superior touch performance and highest efficient collaboration among multi users
- Best writing experience : anti-glare surface and paper-like touching and drawing feeling
- Differentiates pen, finger and fist. Palm rejection feature
- Sleek design with flat glass surface and narrow border
- Benefits from all the premium features of the SQ1 display range, 4K resolution, 500 cd/m², 24/7 operation, in large formats 86", 75", 65", 55"
- High expandability with ultra-slim Intel® SDM (Intel® Smart Display Module) slot, DisplayPort connection for daisy-chain signage, multiple screen function (quad, PinP, PbyP) and 4K DIGITAL LINK to create integrated smart collaboration and signage solutions

Basic Specifications



SQE1-IG Series

Premium interactive multi-touch display – ideal for executive-level meeting rooms, collaborative spaces or interactive applications.

Ideal for:

- Meeting Rooms
- Huddle Rooms
- Showrooms
- Museums
- Exhibitions
- Higher Education
- Control rooms
- Broadcast studios
- Retail
- Signage

Key Features:

- Featuring InGlass™ reliable and stable touch technology. Gives best touch accuracy with 4K resolution.
- Up to 20/40 simultaneous touches and drags for superior touch performance and highest efficient collaboration among multi users
- Best writing experience : anti-glare surface and paper-like touching and drawing feeling
- Differentiates pen, finger and fist. Palm rejection feature
- Sleek design with flat glass surface and narrow border
- Benefits from all the premium features of the SQE1 display range, 4K resolution, 500 cd/m², 24/7 operation, in large formats 86", 75", 65", 55"
- Slot with Intel® SDM (Smart Display Module) specifications. Equipped with 4 HDMI, USB Type-A and C, DP(In/Out) input terminals, supports HDMI CEC

Basic Specifications



SQE1-IR Series

4K multi-touch display with infrared technology and high flexibility to enhance collaboration

Ideal for:

- Exhibitions
- Higher Education
- Control rooms
- Broadcast studios

Key Features:

- Slim and stylish design multi-touch screens 55" to 86", 500 cd/m², 24/7 operation
- Narrow bezel with high precision simultaneous 20 touch-point technology for novelty design and outstanding performance
- 4K resolution, fast response and precise touch for the highest detail and quality of images, drawings or data. Non-4K sources are also beautifully compensated
- Bright and efficient high-visibility 4K panel
- Built-in USB Media Player playing 4K content eliminates the need for external devices and allows updates to USB memory devices via LAN
- Slot with Intel® SDM (Smart Display Module) specifications. Equipped with 4 HDMI, USB Type-A and C, DP(In/Out) input terminals, supports HDMI CEC
- Flexible and light installation either in Portrait, landscape and tilt (landscape forward 20 degree) orientation

Basic Specifications



CQE1-IR Series

4K entry professional multi-touch display with infrared touch technology for high user engagement

Ideal for:

- Classrooms and seminar rooms
- Huddle rooms
- Offices
- Lecture theatres
- Presentation rooms
- Control rooms.

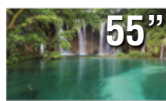
Key Features:

- Slim and stylish design with wide range of sizes, from 55" to 86", to meet any space
- Narrow bezel with infrared technology and up to 20 simultaneous touch points to ensure an ease of use and to enhance interaction and collaboration
- 4K resolution for the highest detail and quality of images, drawings and data. Non-4K sources are also beautifully compensated
- Built-in USB Media Player playing 4K content eliminates the need for external devices and allows updates to USB memory devices via LAN
- Extensive connectivity

Basic Specifications



VF/LFV Series



Model no.		TH-55VF2H	TH-55VF2	TH-55LFV9
DISPLAY PANEL	Screen size (Diagonal)/Aspect Ratio	55-inch (1387 mm)/16:9	55-inch (1387 mm)/16:9	55-inch (1387.8 mm)
	Panel Type	IPS/Direct LED	IPS/Direct LED	IPS/Direct LED
	Effective Display Area (W x H)	1209.6 x 680.3 mm (47.6" x 26.7")	1209.6 x 680.3 mm (47.6" x 26.7")	1209.6 x 680.4 mm (47.62" x 26.78")
	Resolution (H x V)	1920 x 1080	1920 x 1080	1920 x 1080
	Brightness (Typ.)	700 cd/m ²	500 cd/m ²	500 cd/m ²
	Contrast Ratio	1100:1	1100:1	1200:1
	Dynamic Contrast Ratio	500000:1	500000:1	500000:1
	Response Time	8.0 ms (G to G)	8.0 ms (G to G)	8.0 ms (G to G)
	Viewing Angle (Horizontal/Vertical)	178° / 178° (CR≥10)	178° / 178° (CR≥10)	178° / 178° (CR≥10)
	Panel Surface Treatment	Advanced Anti-Glare (Haze 28 %)	Advanced Anti-Glare (Haze 28 %)	Anti-Glare (Haze 28 %)
TERMINAL	HDMI In	HDMI Type A Connector x 1		HDMI Type A Connector x 2
	VIDEO In	—		BNC x 1 (Shared with Component In)
	Audio In (L/R)	—		Stereo Mini Jack x 1 (Shared with Component In)
	Component/RGB In	—		BNC x 1 set (Shared with VIDEO In)
	Audio In (L/R)	—		Stereo Mini Jack x 1 (Shared with Video In)
	DisplayPort In	DisplayPort x 1 (DP1.1a Dual Mode Only)		DisplayPort x 1 (DP1.1a / DP1.2)
	DisplayPort Out	—		DisplayPort x 1
	DVI-D In	DVI-D 24-pin x 2 (Female)		DVI-D 24-pin x 1 (Female)
	Audio In (L/R)	Stereo Mini Jack (M3) x 1 (Shared with PC In)		Pin Jack (L+R) x 1 set (Shared with PC In)
	DVI-D Out	—		—
	PC In	Mini D-Sub 15-pin x 1 (Female)		Mini D-Sub 15-pin x 1 (Female)
	Audio In (L/R)	Stereo Mini Jack (M3) x 1 (Shared with DVI-D In)		Pin Jack (L+R) x 1 set (Shared with DVI-D In)
	DVI-I Out	—		DVI-I 29-pin x 1
	USB	USB Connector (TYPE-A) x 1, DC 5 V/500 mA (USB3.0 is not supported.)		USB Connector (TYPE-A) x 1, DC 5 V/500 mA (USB3.0 is not supported.)
	Serial In/Out	D-Sub 9-pin x 1 (Male) / x 1 (Female), RS-232C Compatible D-Sub 9-pin x 1 (Male) / x 1, RS-232C Compatible		2.5 mm Phone Jack x 1 / x 1
	DIGITAL LINK In/DIGITAL LINK Out	RJ45 x 1 / x 1, 100 BASE-TX, Compatible with long reach mode and PjLink™ (Shared with LAN)		—
	LAN	RJ45 x 1 / x 1, (100 BASE-TX, Compatible with PjLink™) (Shared with DIGITAL LINK)		RJ45 x 1, 10 BASE-T / 100 BASE-TX, Compatible with PjLink™
	IR In/Out	Stereo Mini Jack (M3) x 1 / x 1		Stereo Mini Jack (M3) x 1 / x 1
	Audio 1 In	Stereo Mini Jack (M3) x 1		—
	Audio 2 In	L/R Pin Jack x 1		—
	Audio Out	Stereo Mini Jack (M3) x 1, 0.5 V [rms] Variable (-∞ ~ 0 dB) (1 kHz 0 dB Input, 10 kΩ Load)		Stereo Mini Jack (M3) x 1 0.5 V [rms] Variable (-∞ ~ 0 dB) (1 kHz 0 dB Input, 10 kΩ Load)
GENERAL	Power Requirements	220-240 V AC, 50 Hz/60 Hz		220-240 V AC, 50 Hz/60 Hz
	Power Consumption	300 W		185 W
	Stand-by Condition	Approx. 0.5 W		Approx. 0.5 W
	Dimensions (W x H x D)	1210.6 x 681.3 x 97.3 mm (47.66" x 26.82" x 3.83")		1213.4 x 684.2 x 98.0 mm (47.78" x 26.94" x 3.86")
	Carton Size (W x H x D)	1395 x 848 x 280 mm (55.0" x 33.4" x 11.1")		1395 x 848 x 280 mm (55.0" x 33.4" x 11.1")
	Bezel Width	T/B/L/R: 0.44 mm (0.018")		L/T: 2.25mm (0.089"), R/B: 1.25mm (0.049")
	Bezel to Bezel ^{*1}	0.88 mm (0.034") (Multi Screen)		3.5 mm (0.14") (Multi Screen)
	Weight	Approx. 23.0 kg (50.7 lbs.)		27.0 kg (59.5 lbs.)
	Gross Weight	Approx. 34.0 kg (75.0 lbs.)		37.0 kg (81.6 lbs.)
	Pitch for Wall-Hanging	VESA compliant 400 x 400 mm (15.8" x 15.8")		VESA compliant 400 x 400 mm (15.8" x 15.8")
	External Speaker	—		8 Ω, 20 W [10W + 10 W] (10% THD)
	Orientation ^{*2}	Landscape/Portrait		Landscape/Portrait
	Tilting Angle ^{*2}	Vertical Only		Vertical Only
OPERATING ENVIRONMENT	Operating Environment	Temperature: 0 °C to 40 °C (32 °F to 104 °F) ^{*3} / 0 °C to 35 °C (32 °F to 95 °F) ^{*4} / Humidity: 20 % to 80 % (No Condensation)		Temperature: 0 °C to 40 °C (32 °F to 104 °F) ^{*3} / 0 °C to 35 °C (32 °F to 95 °F) ^{*4} / Humidity: 20% to 80% (No Condensation)
	Storage Environment	Temperature: -20 °C to 60 °C (-4 °F to 140 °F) / Humidity: 10% to 90 % (Non condensation)		Temperature: -20 °C to 60 °C (-4 °F to 140 °F) / Humidity: 10 % to 90 % (Non condensation)
	Operating Time ^{*6}	24 h/day		24 h/day
	Cover Frame Kit	—		—
OPTIONS	Installation Mount	TY-VK55LV2		TY-VK55LV2
	Early Warning Software ^{*7}	ET-SWA100/105 Series		ET-SWA100/105 Series
	Auto Display Adjustment Upgrade Kit ^{*8}	TY-VUK10		TU-VUK10
	Multi Window Processor	—		—

*1: Bezel-to-Bezel distance means the combined top and bottom (or left and right) bezel width of adjacent displays in multi-screen. The gap between displays is not included. Note a gap of 0.5 mm (0.02") or more is required when installing multiple displays.

*2: Please contact your sales representative with regard to the tilt angle before installation.

*3: For up to 1400 m (4593 ft) altitude. *4: For between 1400m (4593 ft) to 2800 m (9186 ft) altitude. *5: For up to 2000 m (6562 ft) altitude.

*6: In case of long time, the moving image is recommended to be displayed. If you display a still picture for an extended period, the image retention might remain on the screen. However, image retention can gradually disappear by displaying a moving images.

*7: Multi Monitoring & Control Software Ver. 2.1 or later is required. Suffix of the part number may differ depending on the license type.

*8: Download the latest Video Wall Manager from Global Website in advance. (<https://panasonic.net/cns/prodisplays/download/software/vwm/>)

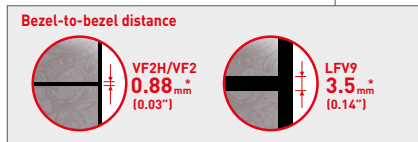
Narrow Bezel for Seamless Video Walls

VF2H/VF2 LfV9

Narrow frames on Panasonic's LCD Video Wall Series reduce bezel-to-bezel distance to a near-invisible 0.88 mm*. Even when viewed close-up, screen borders are almost indiscernible, resulting in truly spectacular large-format images.



* TH-55VF2H/55VF2 features 0.88 mm (0.03"), and TH-55LfV9 3.5 mm (0.14"), bezel-to-bezel distance. Bezel-to-bezel distance refers to the combined top and bottom (or left and right) bezel-width of adjacent displays in video-wall configuration. The gap between displays is not included. Note that a gap of 0.5 mm or more is required when installing multiple displays.

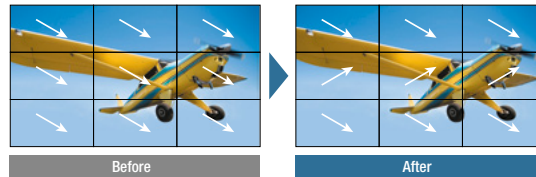


Improved Multi-Screen Video Visibility

When high-speed video is played on multiple screens in a video wall, some image misalignment can occur between vertically adjacent panels. VF2H, and VF2 Series feature a Reverse Scan Function that alternates the scanning direction of vertically adjacent displays to improve image alignment. Frame Control Function, meanwhile, adjusts the number of video frames displayed to reproduce images with natural fluidity.

Reverse Scan Function

Reverses direction of image scanning to smoothly play enlarged video on multiple screens

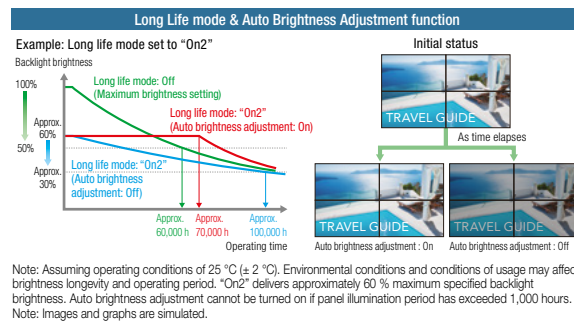


Note: Images are simulated.

Delivers Stable Brightness for Up to 8 Years*

The VF2H, and VF2 Series incorporates Long Life mode and a new Auto Brightness Adjustment function. In Long Life mode, backlight brightness is optimized to extend product life. Auto Brightness Adjustment function corrects light output automatically according to the rate of backlight deterioration to maintain constant brightness for longer.

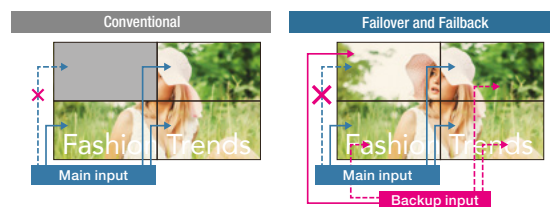
* Figure is approximate when operating continuously for 24 hours x 365 days.



Failover and Failback Safeguards Maintain Image Display

Digital signal inputs comprise one or two DVI-D terminals together with HDMI, DisplayPort, DIGITAL LINK*, and USB terminals. If primary audio-video signals are interrupted, the display immediately switches to an alternative input. This makes the Panasonic LCD Video Wall Series well suited for use in control rooms and in other applications where uninterrupted playback is essential.

* DIGITAL LINK available on VF2H, VF2 only. Display Port available on VF2H, VF2 only.



If AV signals via the primary input is interrupted, images are no longer displayed.

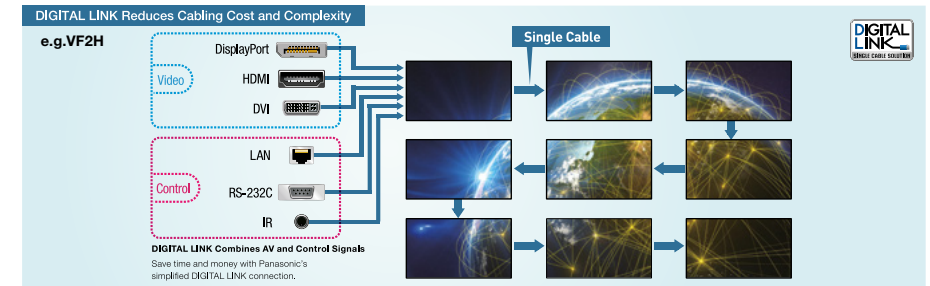
If the primary AV signal is interrupted, the system automatically switches to a backup input so video display is maintained.

Note: Possible combinations of main/backup input signals are limited. For details, please visit the Panasonic website.

DIGITAL LINK Simplifies Installation at Lower Cost

VF2H/VF2

Based on HDBaseT™ technology, the DIGITAL LINK connection on VF2H, VF2 Series displays supports audio, video, and control signal transmission over long distances, and can also be used to daisy-chain multiple displays via a single cable. This eliminates the need for video splitters and other routing devices. The LfV9 Series, meanwhile, supports daisy chain via DVI with separate video and control (serial or IR) connections. Note: CAT5e or higher STP cable required.



Installation Frame Simplifies Set-up

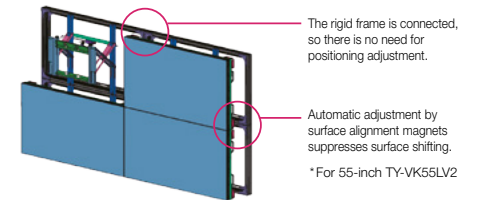
The optional Installation Mount makes it much easier to configure a video wall. There's no need for complicated display positioning, and fluctuations between installers are covered. It also saves time and cuts labor costs.

Video wall fluctuations occur when the bezels are not correctly aligned vertically and horizontally and the surfaces are not properly adjusted. Installation is quick and easy using the rigid frame, with easy adjustment using surface alignment magnets. This structure also makes the displays easier to remove when performing maintenance.

* The following is the maximum number of units when installing a multi-screen using the optional TY-VK55LV2 metal fittings.

- TH-55VF2H/VF2: 4 columns, 5 rows
- TH-55LfV9: 9 columns, 11 rows

*Landscape setting only.



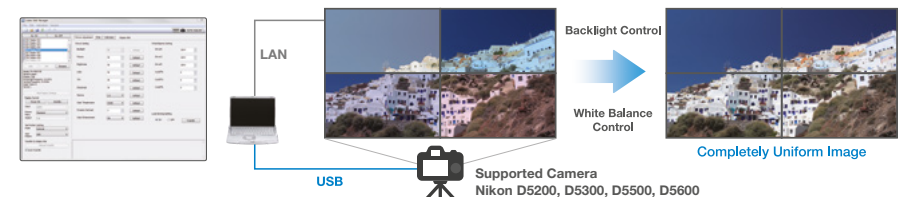
Video Wall Manager Software and Auto Display Adjustment Upgrade Kit

Panasonic's free Video Wall Manager software can be used with LCD Video Wall Series displays. With this software, you can calibrate display color using a color sensor*1 (optional), adjust display settings, and control and manage data via PC. If you upgrade this software with an optional TY-VUK10 Auto Camera Adjustment Kit, you can adjust brightness and color among multiple displays automatically using a compatible camera (Nikon D5200/D5300/D5500/D5600)*2.

*1 Applicable sensors: KONICA MINOLTA (CA-210, CA-310, CA-410 [Probe CA-VP427, CA-P410, CA-P427, CA-MP410 verified as of June 30, 2020]), Datacolor (Spyder4, Spyder5, SpyderX) X-Rite (i1Pro2)

*2 Available only with normal zoom lens: AF-S DX NIKKOR 18–55 mm f/3.5–5.6G VR, AF-S DX NIKKOR 18–140 mm f/3.5–5.6G ED VR, AF-S DX NIKKOR 18–55 mm f/3.5–5.6G VR II

With VF2H and TY-VUK10 connected



Auto Display Adjustment Upgrade Kit: <https://panasonic.net/cns/prodisplays/products/ty-vuk10/>

PressIT

Plug & Play Wireless Presentation System

Dongle based wireless presentation system for fast and simple screen sharing

Lineup



	Basic Set	Receiver (Board)	Transmitter (HDMI)		Transmitter (USB Type-C)	
Model	TY-WPS1	TY-SB01WP	TY-WP2B1	TY-WPB1	TY-WP2BC1	TY-WPBC1
Applicable product	Flat Panel Display / Projector (Panasonic and others)	SQ1/H and SQE1 series	PC/Tablet/Smartphone			
What's included?	1 Receiver (Box) x1 3 Transmitter (HDMI) x2 5 Case for Transmitter x1	2 Receiver (Intel® SDM specification) x1	3 Transmitter (HDMI) x2 5 Case x1	3 Transmitter (HDMI) x1	4 Transmitter (USB Type-C) x2 5 Case x1	4 Transmitter (USB Type-C) x1

Connects to mobile devices*

HDMI-CEC command compatible

Low latency

Antibacterial surface treatment

Presents 4 screens in full HD** (supports 4K)

Lock mode prevents interrupts

Touch back function when used with a interactive display

* iOS device: AV adaptor by Apple is required. iOS app to be released middle of 2021. Android: Easy screen sharing with a dedicated app
** up to 32 transmitters at once

WOLFvision CYNAP PURE

Fully Integrated Wireless Presentation System

No cables, no dongles, no set-top boxes. All you have to do is present.



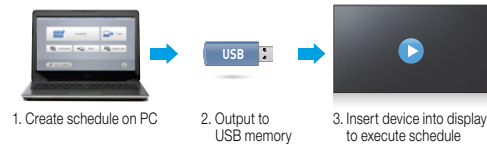
- Flexible BYOD for SQE1 and SQ1/H Series:**
Supports Airplay, Miracast, Chromecast
- Touch back function:** you can control your PC directly from the interactive display
- 4K** **4K UHD output resolution:**
up to 4 windows on-screen
- Advanced administration:**
Can be managed and updated remotely using browser-based administration tools.
- 100% data encryption:**
Stable and secure system based on Linux Operating System

Panasonic Software Line-up

In order to maximize the use of professional displays, Panasonic offers a variety of software and applications (some free of charge, and others for a fee).

Content Management Software

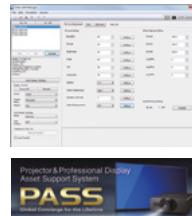
Content Management Software makes it possible to create scheduling data and media playlist on a PC and save it to one or more USB memory. Insert the media into Space Players to execute the schedule. The software reduces complexity for temporary installations or where the device is frequently moved from place to place.



Compatible Display: SQ1H Series, SQ1 Series
<https://panasonic.net/cns/prodisplays/download/software/>

Auto Display Adjustment Upgrade Kit (TY-VUK10)

Panasonic's free Video Wall Manager software can be used with LCD Video Wall Series displays. With this software, you can calibrate display color using a color sensor, adjust display settings, and control and manage data via PC. If software is upgraded with an optional TY-VUK10 Auto Display Adjustment Upgrade Kit, brightness and color among multiple displays can be automatically calibrated using a compatible camera (Nikon D5200/D5300/D5500/D5600)*.



* Available only with normal zoom lens: AF-S DX NIKKOR 18-55 mm f/3.5-5.6G VR, AF-S DX NIKKOR 18-140 mm f/3.5-5.6G ED VR, AF-S DX NIKKOR 18-55 mm f/3.5-5.6G VR II

For more information, please visit the PASS: <https://panasonic.net/cns/prodisplays/pass/>

Screen Transfer

Screen Transfer is a software that allows a computer screen to be displayed onto one or more displays of devices that are connected by wired LAN. See the User's Manual for the operating method.



Version	Ver. 2.0	Ver. 1.0
Number of device connections	Max. 64 units	Max. 8 units
Bandwidth	Approx. 10 Mbps (regardless of the number of connected devices)	Approx. 80 Mbps (when 8 devices are connected)
Auto reconnection ³	Yes	—
Delivery status check	Yes	—

* Video distribution can be with existing IP network infrastructure

Compatible Display: SQ1H Series, SQ1 Series
https://panasonic.net/cns/prodisplays/download/software/scr_transfer/

* The number of connections and functions may vary depending on the model. Please refer to the web for details.

Mobile App (iOS/Android)

Wireless Projector

This is an application that lets you send displayed screenshot, document files (PDF, PowerPoint, Excel, Word), and JPEG/PNG images saved to Android devices (tablets and smartphones) to a Panasonic wireless display over a wireless LAN (Wi-Fi), and display them. The application also lets you rotate the screen, enlarge or reduce the screen with a pinch operation, and flip through pages with a flick operation.

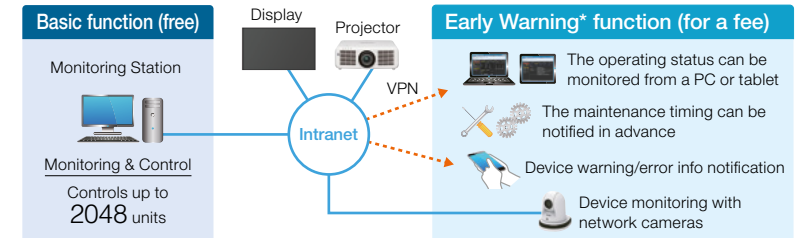


- Dedicated wireless apps for iOS and Android™
- Fewer steps to connect
- Wide media compatibility and functionality

For more information, please visit the Website:
<https://panasonic.net/cns/prodisplays/download/software/#wireless>

Multi Monitoring & Control Software

This free Panasonic software offers monitoring and control of up to 2,048 projectors and professional displays over a LAN network from a single PC to simplify management and maintenance while supporting stable operation. If you also purchase Early Warning Software (ET-SWA100), it will monitor the status of projectors and displays on the intranet and inform you of errors when it detects signs of trouble. This contributes to a lighter maintenance load and reduces costs.



* Software function support varies by model.
* Multi Monitoring & Control Software Ver. 2.0 or higher is required to use the Early Warning function.

Features

• Map Display

Image files, such as floor plans, can be loaded, and the icon for each device can be positioned by 'Drag & Drop'.



• Auto Search of the Devices to Be Registered

You can select the devices to be registered from devices automatically searched on the network.¹

• Other Features

- Monitoring of the status of each device²
- Execution of control commands
- Scheduling function
- Delivery of the contents list³

Early Warning Function (ET-SWA100)

Maintenance Scheduling Suggestion³

It is easier to plan for maintenance by predicting the approximate time for maintenance and service based on the usage monitoring.

Video Stop Detection Using a Network Camera

Images of registered projectors or displays can be monitored regularly by a supported network camera⁴.

You can also receive a notification when an abnormality such as a blackout or an image freeze happens.

If you install 'Multi Monitoring & Control Software,' a free 90-day trial is automatically available.



Captured image when an abnormality happens is stored

*1: Some devices can't be registered using the auto search function depending on the device status and network environment.

*2: Software functionality varies depending on the model. *3: Function for supported projectors and professional displays only.

*4: Panasonic Network camera (BB-S/DG-S/WV-S series), Panasonic PTZ camera (AW-UE70/HE40/HE130 series).

For more information about compatible displays, please visit the Website:
https://panasonic.net/cns/prodisplays/download/software/multi/dl_files/DeviceList-Multi_EN.pdf

Early Warning function License * If you install "Multi Monitoring Control Software", a free 90 day trial.
For more information, please visit the PASS: <https://panasonic.net/cns/prodisplays/pass>

Supports the Next-Generation Intel® SDM Specification Slot Standard

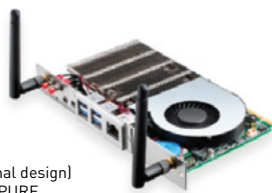
The SQ1H/SQ1/SQE1 Series is equipped with the new Intel® SDM specification slot standard that supports 4K signals. With this expansion slot, it is possible to tailor the display and its connectivity to the application. You can easily integrate a built-in PC and add various interfaces.



Wolfvision Cynap Pure -integrated Wireless Presentation System

No Cable. No Dongle. No Set-Top Box. Just Present.

Panasonic fully integrates WolfVision's Cynap Pure powerful BYOD wireless presentation solution into its SQ1H/SQ1/SQE1 displays using the Intel® Smart Display Module slot. The unified collaboration system is the perfect, integrated solution for meeting rooms, classrooms and huddle spaces with a discrete design, no cabling and no need for additional applications, software and driver downloads or dongles and set-top boxes. Installation inside the screen is straightforward, and units can be managed and updated remotely using browser-based administration tools.



(not final design)
TY-SBPURE



Key Features

- Screen Mirroring using Miracast technology. Supports iOS, iPadOS, Android, Windows, Chrome OS, macOS
- 4K output resolution
- Up to 4 window on-screen display
- Touch back support, enables remote control of laptops while working at a shared multi-touch screen.
- Also compatible with the Panasonic interactive touchscreen SQE1-IR/IG and SQ1-IG versions of the display range for easy control by touch and for on-screen annotations

Panasonic Wireless Presentation System

Efficient Meeting Room Collaboration

The System allows up to easily switch between up to four presenters to display visual and audio content on their Panasonic displays or projectors – removing the need for cables. Users simply connect the transmitter button into their PCs USB and HDMI ports and press the button to share content on the display. No set-up, software or driver installation is required. Two types of receivers are possible: The SDM receiver is designed to perfectly fit inside the Intel® SDM expansion slot of the Panasonic SQ1H/SQ1/SQE1 displays. For Panasonic displays and projectors without an SDM slot for the receiver, a set-top box version of the system can be connected to the device by cable.



Receiver
(not final design)
TY-SB01WP



Transmitter



Key Features

- Two versions: basic with the set-top-box or cable-less with the SDM-S board receiver.
- Plug and Play: no dedicated software installation is necessary for the PC
- Audio and FHD Video over Wireless transmission, IEEE802.11ac compliant



3G SDI - SDM Board

Perfect for Broadcasting Environment

Just by plugging the SDI terminal board into its Intel® SDM slot you can directly connect the SQ1 and SQ1-IG series displays to a Pro AV source, saving the need for optional equipment like converters that normally bring latency into the production chain. You can transmit uncompressed, unencrypted digital video signals over up to 100m with a single BNC cable, in environments where cabling could be unplugged or tripped over.

This SDM-SDI Terminal Board makes the SQ range of displays perfect for a broadcast environment, with its great colour reproduction and high contrast with HDR and BT.2020 emulation.



SDM-L
Kingston Creek U

Key Features

- Compatible with 3G-SDI, HD-SDI, SD-SDI audio and video formats
- To be plugged inside professional displays with Intel SDM slot
- Maximum Transmission distance 100m with BNC cable



Optional Accessories

		High Brightness		Standard													
		TH-86SQ1H	TH-75SQ1H	TH-98SQ1	TH-86SQ1	TH-75SQ1	TH-65SQ1		TH-55SQ1	TH-49SQ1	TH-98SQE1	TH-86SQE1	TH-75SQE1	TH-65SQE1	TH-55SQE1	TH-49SQE1	TH-43SQE1
Screen Size (inch)		86	75	98	86	75	65		55	49	98	86	75	65	55	49	43
FUNCTION BOARD																	
3G-SDI Terminal Board	TY-SB01SS	Yes*1	Yes*1	Yes*1	Yes*1	Yes*1	Yes*1		Yes*1	Yes*1	-	-	-	-	-	-	-
MOUNTING OPTIONS																	
Pedestal	TY-ST75PE9	-	-	-	-	Yes	-		-	-	-	-	-	-	-	-	-
	TY-ST55PE9	-	-	-	-	-	Yes		Yes	-	-	-	-	-	-	-	-
	TY-ST43PE9	-	-	-	-	-	-		-	Yes	-	-	-	-	-	-	-
	TY-ST43PE8	-	-	-	-	-	-		-	-	-	-	-	-	-	-	-
	TY-ST32PE1	-	-	-	-	-	-		-	-	-	-	-	-	-	-	-
Wall-hanging Bracket	TY-WK98PV1	Yes	Yes	Yes	Yes	Yes	Yes		-	-	-	-	-	-	-	-	-
Installation Mount (Landscape setting only)	TY-VK55LV2	-	-	-	-	-	-		-	-	-	-	-	-	-	-	-
Pitch for Wall Hanging (VESA compliant models)	800 x 500 (M8)	-	-	Yes	-	-	-		-	-	-	-	-	-	-	-	-
	800 x 400 (M8)	Yes	Yes	-	-	-	-		-	-	Yes	-	-	-	-	-	-
	600 x 500 (M8)	-	-	-	-	-	-		-	-	-	-	-	-	-	-	-
	600 x 400 (M8)	-	-	-	Yes	-	-		-	-	-	Yes	Yes	-	-	-	-
	600 x 400 (M6)	-	-	-	-	Yes	-		-	-	-	-	-	-	-	-	-
	400 x 400 (M8)	-	-	-	-	-	-		-	-	-	-	-	-	-	-	-
	400 x 400 (M6)	-	-	-	-	-	Yes		Yes	Yes	-	-	-	Yes	-	-	-
	400 x 200 (M6)	-	-	-	-	-	-		-	-	-	-	-	-	Yes	-	-
	200 x 200 (M6)	-	-	-	-	-	-		-	-	-	-	-	-	-	Yes	Yes
	100 x 100 (M4)	-	-	-	-	-	-		-	-	-	-	-	-	-	-	-
OTHERS																	
DIGITAL LINK Switcher	ET-YFB200G	Yes	Yes	Yes	Yes	Yes	Yes		Yes	Yes	-	-	-	-	-	-	-
Digital Interface Box	ET-YFB100G	-	-	Yes	Yes	Yes	Yes		Yes	Yes	-	-	-	-	-	-	-
Multi Window Processor	ET-MWP100*2	-	-	Yes	Yes	Yes	Yes		Yes	Yes	-	-	-	-	-	-	-

The specification has a case to change without notice.

*1: This terminal board is supported only when the main software version of the display is 3.5000 or later and the sub software version of the display is 03.50 or later.

For update, please contact your Panasonic dealer.

*2: The availability varies depending on the country.

For information that is not included on this page, please visit the following website:
<https://panasonic.net/cns/prodisplays/index.html>

Optional Accessories

		Entry							Video Wall			
		TH-98CQE1	TH-86CQE1	TH-75CQE1	TH-65CQE1	TH-55CQE1	TH-49CQE1		TH-43CQE1	TH-55VF2H	TH-55VF2	TH-55LFV9
Screen Size (inch)		98	86	75	65	55	49		43	55	55	55
FUNCTION BOARD												
3G-SDI Terminal Board	TY-SB01SS	-	-	-	-	-	-		-	-	-	-
MOUNTING OPTIONS												
Pedestal	TY-ST75PE9	-	-	-	-	-	-		-	-	-	-
	TY-ST55PE9	-	-	-	-	-	-		-	-	-	-
	TY-ST43PE9	-	-	-	-	-	-		-	-	-	-
	TY-ST43PE8	-	-	-	-	-	-		-	-	-	-
	TY-ST32PE1	-	-	-	-	-	-		-	-	-	-
Wall-hanging Bracket	TY-WK98PV1	-	-	-	-	-	-		-	-	-	-
Installation Mount (Landscape setting only)	TY-VK55LV2	-	-	-	-	-	-		-	Yes	Yes	Yes
Pitch for Wall Hanging (VESA compliant models)	800 x 500 (M8)	-	-	-	-	-	-		-	-	-	-
	800 x 400 (M8)	Yes	-	-	-	-	-		-	-	-	-
	600 x 500 (M8)	-	-	-	-	-	-		-	-	-	-
	600 x 400 (M8)	-	Yes	Yes	-	-	-		-	-	-	-
	600 x 400 (M6)	-	-	-	-	-	-		-	-	-	-
	400 x 400 (M8)	-	-	-	-	-	-		-	-	-	-
	400 x 400 (M6)	-	-	-	Yes	-	-		-	Yes	Yes	Yes
	400 x 200 (M6)	-	-	-	-	Yes	-		-	-	-	-
	200 x 200 (M6)	-	-	-	-	-	Yes		Yes	-	-	-
	100 x 100 (M4)	-	-	-	-	-	-		-	-	-	-
OTHERS												
DIGITAL LINK Switcher	ET-YFB200G	-	-	-	-	-	-		-	-	-	-
Digital Interface Box	ET-YFB100G	-	-	-	-	-	-		-	-	-	-
Multi Window Processor	ET-MWP100*1	-	-	-	-	-	-		-	Yes	Yes	Yes

The specification has a case to change without notice.

*1: The availability varies depending on the country.

For information that is not included on this page, please visit the following website:
<https://panasonic.net/cns/prodisplays/index.html>

Features

		High Brightness						Standard									
		TH-86SQ1H	TH-75SQ1H	TH-98SQ1	TH-86SQ1	TH-75SQ1	TH-65SQ1		TH-55SQ1	TH-49SQ1	TH-98SQE1	TH-86SQE1	TH-75SQE1	TH-65SQE1	TH-55SQE1	TH-49SQE1	TH-43SQE1
Size (inch)		86	75	98	86	75	65		55	49	98	86	75	65	55	49	43
SPECIFICATIONS	Touch Operation	-	-	-	-	-	-		-	-	-	-	-	-	-	-	-
	Operating Time	24	24	24	24	24	24		24	24	24	24	24	24	24	24	24
	DIGITAL LINK	Yes*1	Yes*1	Yes*1	Yes*1	Yes*1	Yes*1		Yes*1	Yes*1	-	-	-	-	-	-	-
	Wireless Function	-	-	-	-	-	-		-	-	Yes	Yes	Yes	Yes	Yes	Yes	Yes
	Protective Glass	-	-	-	-	-	-		-	-	-	-	-	-	-	-	-
	Function Slot	Intel® SDM			Intel® SDM				Intel® SDM		Intel® SDM						
INSTALLATION	Portrait	Yes	Yes	Yes	Yes	Yes	Yes		Yes	Yes	Yes	Yes	Yes	Yes	Yes	Yes	Yes
	Multi Screen (Multi Display Setting)*2	Yes	Yes	Yes	Yes	Yes	Yes		Yes	Yes	-	-	-	-	-	-	-
	Daisy Chain Connection	Yes	Yes	Yes	Yes	Yes	Yes		Yes	Yes	-	-	-	-	-	-	-
	Pre Calibration	-	-	-	-	-	-		-	-	-	-	-	-	-	-	-
	Fan-less Design	-	-	Yes	Yes	Yes	Yes		Yes	Yes	Yes	Yes	Yes	Yes	Yes	Yes	Yes
FUNCTIONS	Built-in Whiteboard	-	-	-	-	-	-		-	-	-	-	-	-	-	-	-
	USB Media Player	Yes	Yes	Yes	Yes	Yes	Yes		Yes	Yes	Yes	Yes	Yes	Yes	Yes	Yes	Yes
	Memory Viewer	Yes	Yes	Yes	Yes	Yes	Yes		Yes	Yes	Yes*3	Yes*3	Yes*3	Yes*3	Yes*3	Yes*3	Yes*3
	Data Cloning	USB			USB/LAN				USB/LAN		USB						
	HDMI CEC	Yes	Yes	Yes	Yes	Yes	Yes		Yes	Yes	Yes	Yes	Yes	Yes	Yes	Yes	Yes
	Custrmized Image Setting	Yes	Yes	Yes	Yes	Yes	Yes		Yes	Yes	Yes	Yes	Yes	Yes	Yes	Yes	Yes
	USB Memory Network Setting	Yes	Yes	Yes	Yes	Yes	Yes		Yes	Yes	-	-	-	-	-	-	-
	Multi Input Display*4	Yes	Yes	Yes	Yes	Yes	Yes		Yes	Yes	-	-	-	-	-	-	-
	Portrait Zoom Function	Yes	Yes	Yes*5	Yes*5	Yes	Yes		Yes	Yes	-	-	-	-	-	-	-
	Cisco Systems® Link	-	-	-	-	-	-		-	-	-	-	-	-	-	-	-
	Conference Audio Mode	Yes	Yes	Yes*6	Yes*6	Yes	Yes		Yes	Yes	-	-	-	-	-	-	-
	Input Search (No Signal Auto Switch Setting/Input Signal Search)	Yes	Yes	Yes	Yes	Yes	Yes		Yes	Yes	Yes	Yes	Yes	Yes	Yes	Yes	Yes
	Failover/Failback	Yes	Yes	Yes	Yes	Yes	Yes		Yes	Yes	-	-	-	-	-	-	-
	1:1Pixel Mode	-	-	-	-	-	-		-	-	-	-	-	-	-	-	-
	Color Management	12-axis			12-axis				12-axis		-	-	-	-	-	-	-
	Color Enhancement	Yes	Yes	Yes	Yes	Yes	Yes		Yes	Yes	-	-	-	-	-	-	-
	Adaptive Contrast Correction	-	-	Yes	Yes	Yes	Yes		Yes	Yes	Yes	Yes	Yes	Yes	Yes	Yes	Yes
	Refine Enhancer	Yes	Yes	Yes	Yes	Yes	Yes		Yes	Yes	-	-	-	-	-	-	-
	Gradation Smoother	Yes	Yes	Yes	Yes	Yes	Yes		Yes	Yes	-	-	-	-	-	-	-
	Frame Creation	Yes	Yes	Yes	Yes	Yes	Yes		Yes	Yes	-	-	-	-	-	-	-
	Motion Smoother	-	-	-	-	-	-		-	-	-	-	-	-	-	-	-
	Dynamic Backlight	Yes	Yes	Yes	Yes	Yes	Yes		Yes	Yes	-	-	-	-	-	-	-
	Set up Timer	Yes	Yes	Yes	Yes	Yes	Yes		Yes	Yes	Yes	Yes	Yes	Yes	Yes	Yes	Yes
	Off Timer Setting	-	-	Yes	Yes	Yes	Yes		Yes	Yes	Yes	Yes	Yes	Yes	Yes	Yes	Yes
	Power on Screen Delay	Yes	Yes	Yes	Yes	Yes	Yes		Yes	Yes	Yes	Yes	Yes	Yes	Yes	Yes	Yes
	Auto Setup	-	-	Yes	Yes	Yes	Yes		Yes	Yes	Yes	Yes	Yes	Yes	Yes	Yes	Yes
	No Activity Power Off	-	-	Yes	Yes	Yes	Yes		Yes	Yes	Yes	Yes	Yes	Yes	Yes	Yes	Yes
	PJ Link Protocol	Yes	Yes	Yes	Yes	Yes	Yes		Yes	Yes	Yes	Yes	Yes	Yes	Yes	Yes	Yes
	LAN Control (Network Control)	-	-	Yes	Yes	Yes	Yes		Yes	Yes	Yes	Yes	Yes	Yes	Yes	Yes	Yes
	Web Browser Control	Yes	Yes	Yes	Yes	Yes	Yes		Yes	Yes	-	-	-	-	-	-	-
	Remote ID Control (Function)	-	-	Yes	Yes	Yes	Yes		Yes	Yes	Yes	Yes	Yes	Yes	Yes	Yes	Yes
	Serial ID Control (Function)	-	-	Yes	Yes	Yes	Yes		Yes	Yes	Yes	Yes	Yes	Yes	Yes	Yes	Yes
	Local Dimming	-	-	Yes	Yes	Yes	Yes		Yes	Yes	-	-	-	-	-	-	-
	ECO Mode/Power Management Mode	-	-	Yes	Yes	Yes	Yes		Yes	Yes	-	-	-	-	-	-	-
	Audio Input Select (Switching)	-	-	Yes	Yes	Yes	Yes		Yes	Yes	-	-	-	-	-	-	-
SOFTWARE	Multi Monitoring & Control Software Compatible	Yes	Yes	Yes	Yes	Yes	Yes		Yes	Yes	Yes	Yes	Yes	Yes	Yes	Yes	Yes
	Early Warning Software Compatible*7	Yes	Yes	Yes	Yes	Yes	Yes		Yes	Yes	Yes	Yes	Yes	Yes	Yes	Yes	Yes
	Video Wall Manager	Yes	Yes	Yes	Yes	Yes	Yes		Yes	Yes	-	-	-	-	-	-	-
	Auto Display Adjustment Upgrade Kit (TY-VUK10)	-	-	Yes	Yes	Yes	Yes		Yes	Yes	-	-	-	-	-	-	-
	Content Management Software	Yes	Yes	Yes	Yes	Yes	Yes		Yes	Yes	-	-	-	-	-	-	-

*1: Long Reach Mode compatible. *2: The number of units that can be set as a group varies depending on the model. For details, see the Operation Manual of each model.

*3: The playable application format, GUI and operation procedure for the SQE1 Series' Media Player function are different from those of other models. *4: There are restrictions on the input signal and 4-input Multi Display function. For details, see the Operation Manual of each model. *5: This function is compatible with the Software Main Version 3.0000 or later.

*6: This function is compatible with the Software Main Version 4.0000 or later. *7: The part number suffix may differ depending on the license type.

Note: The specifications may vary depending on the model, even for the same function. For details, see the Operation Manual of each model.

Features

Features		Entry							Video Wall			
		TH-98CQE1	TH-86CQE1	TH-75CQE1	TH-65CQE1	TH-55CQE1	TH-49CQE1		TH-43CQE1	TH-55VF2H	TH-55VF2	TH-55LFPV9
Size (inch)		98	86	75	65	55	49		43	55	55	55
SPECIFICATIONS	Touch Operation	-	-	-	-	-	-		-	-	-	-
	Operating Time	24	16	16	16	16	16		16	24	24	24
	DIGITAL LINK	-	-	-	-	-	-		-	Yes	Yes	-
	Wireless Function	Yes	Yes	Yes	Yes	Yes	Yes		Yes	-	-	-
	Protective Glass	-	-	-	-	-	-		-	-	-	-
	Function Slot	-	-	-	-	-	-		-	-	-	-
INSTALLATION	Portrait	-	-	-	-	-	-		-	Yes	Yes	Yes
	Multi Screen (Multi Display Setting)*1	-	-	-	-	-	-		-	Yes	Yes	Yes
	Daisy Chain Connection	-	-	-	-	-	-		-	Yes	Yes	Yes
	Pre Calibration	-	-	-	-	-	-		-	Yes	Yes	Yes
	Fan-less Design	Yes	Yes	Yes	Yes	Yes	Yes		Yes	Yes	Yes	-
FUNCTIONS	Built-in Whiteboard	-	-	-	-	-	-		-	-	-	-
	USB Media Player	Yes	Yes	Yes	Yes	Yes	Yes		Yes	Yes	Yes	Yes
	Memory Viewer	Yes*2	Yes*2	Yes*2	Yes*2	Yes*2	Yes*2		Yes*2	-	-	-
	Data Cloning								USB	USB/LAN	USB/LAN	-
	HDMI CEC	Yes	Yes	Yes	Yes	Yes	Yes		Yes	-	-	-
	Custmized Image Setting	Yes	Yes	Yes	Yes	Yes	Yes		Yes	Yes	Yes	-
	USB Memory Network Setting	-	-	-	-	-	-		-	Yes	Yes	-
	Multi Input Display	-	-	-	-	-	-		-	-	-	-
	Portrait Zoom Function	-	-	-	-	-	-		-	-	-	-
	Cisco Systems® Link	-	-	-	-	-	-		-	-	-	-
	Conference Audio Mode	-	-	-	-	-	-		-	-	-	-
	Input Search (No Signal Auto Switch Setting/Input Signal Search)	Yes	Yes	Yes	Yes	Yes	Yes		Yes	Yes	Yes	-
	Failover/Failback	-	-	-	-	-	-		-	Yes	Yes	Yes*4
	1:1Pixel Mode	-	-	-	-	-	-		-	Yes	Yes	-
	Color Management	-	-	-	-	-	-		-	-	-	-
	Color Enhancement	-	-	-	-	-	-		-	Yes	Yes	Yes
	Adaptive Contrast Correction	Yes	Yes	Yes	Yes	Yes	Yes		Yes	Yes	Yes	Yes
	Refine Enhancer	-	-	-	-	-	-		-	Yes	Yes	-
	Gradation Smoother	-	-	-	-	-	-		-	-	-	-
	Frame Creation	-	-	-	-	-	-		-	-	-	-
	Motion Smoother	-	-	-	-	-	-		-	-	-	-
	Dynamic Backlight	-	-	-	-	-	-		-	Yes	Yes	-
	Set up Timer	Yes	Yes	Yes	Yes	Yes	Yes		Yes	Yes	Yes	-
	Off Timer Setting	Yes	Yes	Yes	Yes	Yes	Yes		Yes	Yes	Yes	Yes
	Power on Screen Delay	Yes	Yes	Yes	Yes	Yes	Yes		Yes	Yes	Yes	Yes
	Auto Setup	Yes	Yes	Yes	Yes	Yes	Yes		Yes	Yes	Yes	-
	No Activity Power Off	Yes	Yes	Yes	Yes	Yes	Yes		Yes	Yes	Yes	-
	PJ Link Protocol	Yes	Yes	Yes	Yes	Yes	Yes		Yes	Yes	Yes	Yes
	LAN Control (Network Control)	Yes	Yes	Yes	Yes	Yes	Yes		Yes	Yes	Yes	-
	Web Browser Control	-	-	-	-	-	-		-	Yes	Yes	-
	Remote ID Control (Function)	Yes	Yes	Yes	Yes	Yes	Yes		Yes	Yes	Yes	-
	Serial ID Control (Function)	Yes	Yes	Yes	Yes	Yes	Yes		Yes	Yes	Yes	-
	Local Dimming	-	-	-	-	-	-		-	Yes	Yes	Yes
	ECO Mode/Power Management Mode	-	-	-	-	-	-		-	Yes	Yes	Yes
Audio Input Select (Switching)	-	-	-	-	-	-		-	Yes	Yes	-	
SOFTWARE	Multi Monitoring & Control Software Compatible	Yes	Yes	Yes	Yes	Yes	Yes		Yes	Yes	Yes	Yes
	Early Warning Software Compatible*5	Yes	Yes	Yes	Yes	Yes	Yes		Yes	Yes	Yes	Yes
	Video Wall Manager	-	-	-	-	-	-		-	Yes	Yes	Yes
	Auto Display Adjustment Upgrade Kit (TY-VUK10)	-	-	-	-	-	-		-	Yes	Yes	Yes
	Content Management Software	-	-	-	-	-	-		-	Yes	Yes	Yes

*1: The number of units that can be set as a group varies depending on the model. For details, see the Operation Manual of each model. *2: The playable application format, GUI and operation procedure for the CQE1 Series' Media Player are different from those of other models. *3: This function is compatible with the Software Main Version 2.2000 or later. *4: Th-55LFPV9 support only the Failover function. The switching time varies depending on the model and setting. *5: The part number suffix may differ depending on the license type.

Note: The specifications may vary depending on the model, even for the same function. For details, see the Operation Manual of each model.

