



# **Professional AV**

## COLLABORATION SOLUTIONS

---

## **DRIVING AUTHENTIC INTERACTION.**

Xilica® creates collaboration products that help unlock the power of human connection. Built on decades of reimagining how people use technology, Xilica's solutions bridge the distance between individuals, teams, ideas and organisations — unleashing the power of understanding to transform business and society for the better. Through our focus on the enterprise, education and government markets, Xilica and its partners touch the daily lives of people in more than 100 countries.

# SOLARO SERIES

Scalable room processing built for the network.



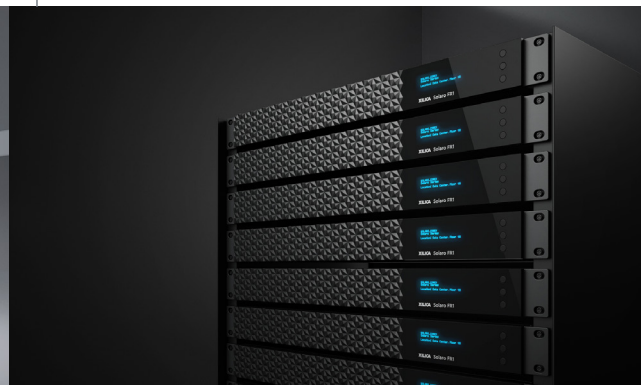
**HOWEVER YOU CHOOSE  
TO DEPLOY PROCESSING,  
SOLARO PROVIDES A RIGHT-  
SIZE FOR YOUR ROOM.**

Locate processing in-room, or centralize in an IT datacenter to cost-optimize the implementation of multiple rooms. Solaro offers footprints that handle both with ease, incorporating the industry's smallest-form-factor processor and a rack-mounted enterprise core. Mount under a table, behind a display, or in a drop-ceiling with the PoE-powered Solaro QR1. Or cater to high-channel-count and distributed applications with the Solaro FR1.

SOLARO QR1



SOLARO FR1



## BUILT FOR UNIFIED COMMUNICATIONS.

Built to outperform in the most demanding web-based collaboration environments, Solaro easily handles Microsoft Teams, Zoom, Cisco Webex and Google Meet with class-leading performance. Interoperability with select platforms allows for driverless USB volume and mute sync with peripherals in your system, such as ceiling microphones.



## ALWAYS HEAR CLEARLY.



Realistic, natural-sounding audio is delivered by class-leading HearClear™ acoustic echo cancellation. Utilizing knowledge from thousands of runtime hours, HearClear eliminates far-end echo with sophisticated algorithms to give collaborators a seamless and noise-free experience.

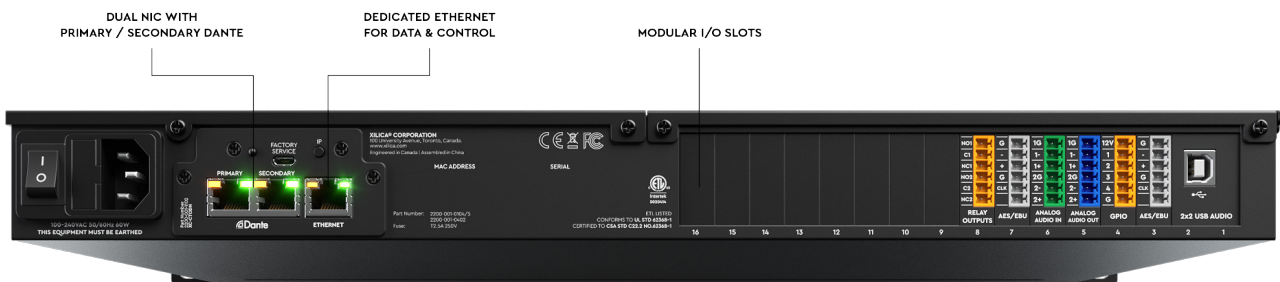
KEEPING THINGS UNDER CONTROL.

Powerful integrated control engine functionality within every Solaro processor helps run a full AVC system with fewer components. Connect touchscreens and wall-pads to Solaro over Ethernet and eliminate costly third-party control systems, leveraging built-in Lua scripting cores and native modules for Technology Vendor Partners. And when you do want to use a third-party controller, Solaro connects to Crestron® and AMX® systems in a few clicks.



DELIVER A STREAMLINED NETWORK EXPERIENCE.

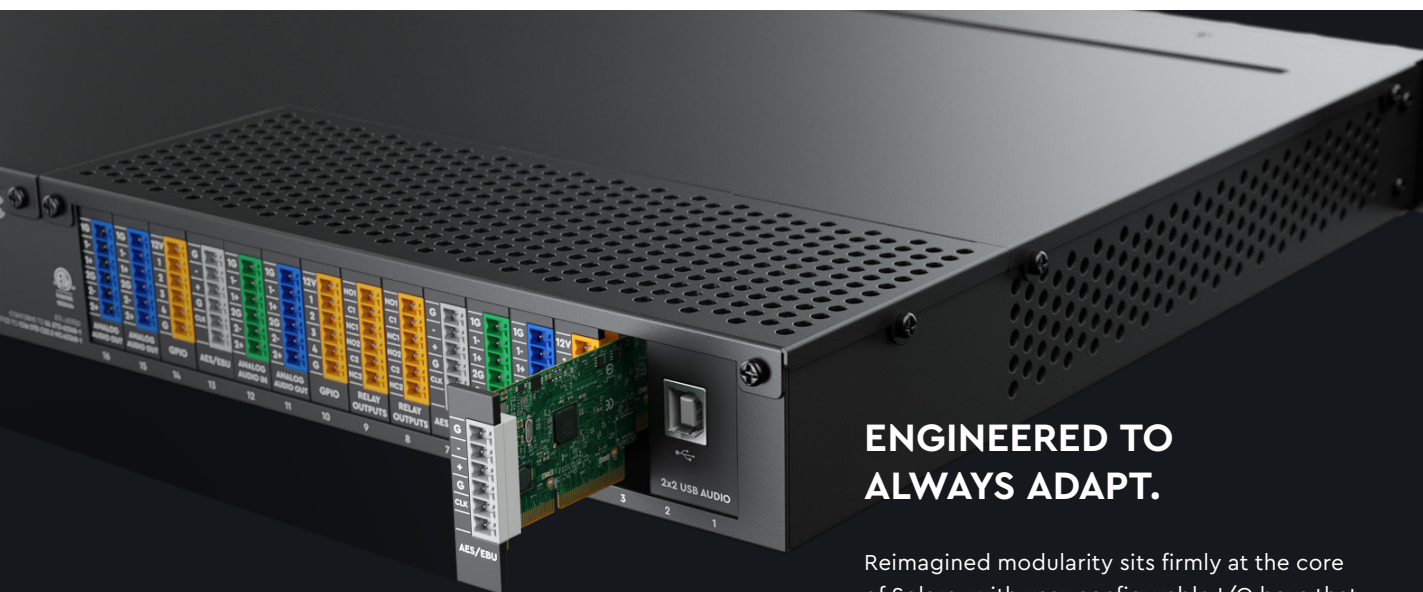
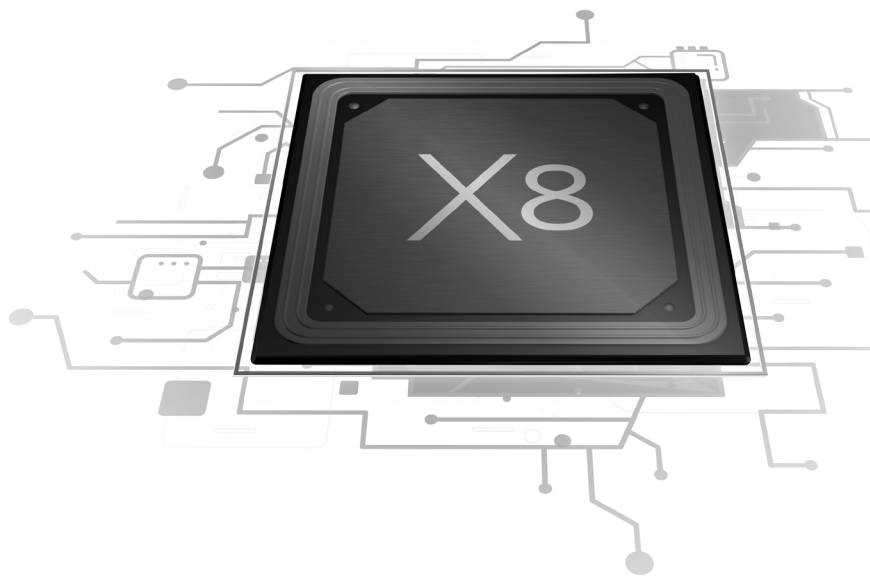
Leverage standard network infrastructure to route audio and control across a facility with Solaro's in-built Layer 3 Dante™ functionality, or benefit from Ethernet-to-Ethernet AV systems without proprietary cable and connectors. Safeguard bandwidth and ring fence security with an onboard dual NIC to achieve physical separation of data and audio networks. And with both primary and secondary Dante networks, Solaro can deliver for mission-critical use cases where redundancy is key.





## BREAKTHROUGH PERFORMANCE WITH THE XILICA X8™ CHIP.

Harnessing two decades of processor innovation, the Xilica X8 System-on-a-Chip (SoC) delivers astonishing power for enterprise-grade applications with a lightning-fast CPU, best-in-class MIPS/mW performance, and minimal power consumption. It also provides exceptional audio quality, with 40-bit floating point processing and class-leading 32-bit signal conversion, backed by sampling rates of up-to 96kHz. Hearing the difference is easy.

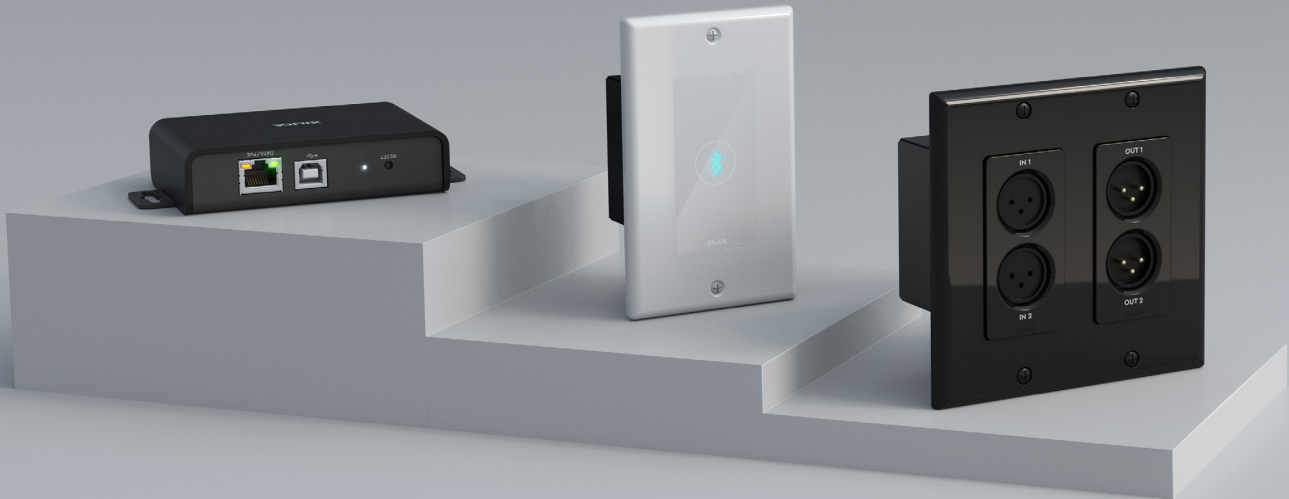


## ENGINEERED TO ALWAYS ADAPT.

Reimagined modularity sits firmly at the core of Solaro, with user-configurable I/O bays that eliminate the need for special tools or service visits. Solaro processors can be populated with any I/O card to deliver the feature-requirements match for your application, allowing systems to scale and product lifecycles to extend — lowering total cost of ownership. From traditional analog audio to USB, GPIO to relay control, it's all possible.

# GIO SERIES

Bring everything onto the network.



## EVERYTHING'S BETTER CONNECTED.



Networked AV allows you to leverage standard network infrastructure to route audio and video signals across your facility

- › Locate low-cost Gio endpoints in each collaboration space, centralizing your processing and system control to drive cost-savings;
- › Remove clunky hardware from the room, eliminating in-room racks and hefty wiring;
- › Send signals campus-wide using standard CatX cable and installed network;
- › Enhance user flexibility with rapid implementation of Bring Your Own Device (BYOD).



## GIO USB

Blend the flexibility of BYOM with the quality of an installed room system. Gio USB is a surface-mount USB-to-Dante endpoint, designed to bridge the gap between IT and AV by bringing laptops and UC appliances onto the installed network. Gio USB enables easy networked processing topographies in multi-room deployments that dramatically reduce processing cost in large installations.

Supporting hybrid work and BYOM, Gio USB offers driverless compatibility with leading soft-codec platforms, including two-way volume and mute sync for Microsoft Teams, allowing control of audio over HID and eliminating dedicated in-room audio controls. Easy to install with a single CatX cable and PoE to IEEE 802.3af, Gio USB mounts discreetly for flexible positioning near the room PC or conference table.

## KEY FEATURES

- ▶ USB-to-Dante endpoint; designed to transmit audio back-and-forth over an installed IT network.
- ▶ Installs under the table or behind a display with small format, integrated mounting.
- ▶ Compatible with all UC platforms, including device status sync for Microsoft Teams.

### Benefits of Gio USB



Locate USB connections where your device is, enabling hybrid working and BYOM for employee peripherals such as laptops, or fewer cables from in-room PCs.



Centralize your processing stack by transporting audio between room and datacenter over the network, splitting cost across multiple rooms for significant savings.



Extend the distance limitations of traditional USB cables with easy-to-install CatX cable.



## GIO BLUETOOTH

Extend your networked AV system to BYOD devices, with the Gio Bluetooth® in-wall module. Leveraging the extended range and exceptional quality of Bluetooth 5.0 Class 1 technology, Gio Bluetooth connects personal peripherals such as smartphones, iPads and laptops to an in-room AV system with IT management functionality. Gio Bluetooth installs into a single-gang with just one CatX cable for both power and data, and offers installer-configurable device naming, PIN security and advanced pairing options.

Optimized for conferencing, Gio Bluetooth lets room users pair their cellphone with the installed AV system to offer two-way audio that can benefit from HearClear™ AEC, voice-lift, and Xilica noise reduction technologies. With configurable functionality including priority pair and auto-disconnection to prevent accidental pairing in busy office facilities, Gio Bluetooth is ideal for the enterprise. Its connectivity state can be controlled remotely through XTouch touchscreens and third-party systems such as Crestron®, AMX®.



**XILICA®**

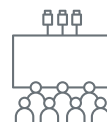
### Benefits of Gio Bluetooth



Bluetooth 5.0 Class 1 technology for superior range and clarity.



Enterprise management and security features.



Optimized for conferencing with multiple pairing configurations and UCI-based triggers.



StudioX™ design for seamless installation in premium collaboration spaces.

## GIO XLR

True connection unlocks the power of possibilities. With Gio XLR, proprietary analog audio products can be connected into an installed network for centralised management, routing and control. Leveraging Dante audio-over-IP technology, Gio XLR is a dual-gang in-wall endpoint with a single cable installation for both power and data. It offers a 2x2 input/output combination with mic/line switching and software-selected 48V Phantom power, making Gio XLR a versatile bridge between audio and IT.



### Benefits of Gio XLR



Transform existing public spaces, such as cafeterias and lobbies, into capable meeting venues for all-hands and training events with the ability to connect an external audio system.



Utilize networked AV infrastructure for applications where analog audio products are ubiquitous, such as in convention centres, ballrooms and hospitality.



Enable expansion of room audio systems in lecture theatres and auditoria for special events.

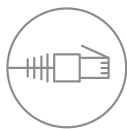
# LUCIA

Simple is beautiful.



When spaces have been designed to foster great collaboration, nothing should get in the way. Lucia delivers simplified control of up-to 32 individual system parameters, presets, sources and levels, without adding distraction. As the industry's only retractable rotary control, Lucia occupies a much smaller footprint than comparable products — with just 0.4" of visible depth — and harnesses capacitive touch for command selection, eliminating buttons or toggles that clutter and confuse.

## Hassle free installation



Deploy over standard network infrastructure without proprietary cables or connectors. A single CatX connects power and data with IEEE 802.3af PoE.



Place into any room in your facility without worry, as strengthened backlighting technology cuts through direct sunlight and commercial-grade lighting.



Let Lucia adapt to you, with its single-gang form-factor available in both US and EU/UK versions for seamless installation.



➤ **DEPLOY AT SCALE WITHOUT CODE.**

Costly and time-consuming programming isn't needed with Lucia. Just drag-and-drop commands from Xilica Designer into the Lucia window and you're ready to go. Set all device functionality within a single software environment and deploy changes immediately over standard network infrastructure. Add multi-lingual characters, symbols and icons for an even greater user experience.

➤ **POWERFUL POSSIBILITIES.**

Lucia's capabilities extend far beyond simple volume adjustment, with the power to control almost any parameter inside a Solaro processor — from typical presets and source selection to adjustment of third-party video and infrastructure devices. Leveraging a minimalist design language, Lucia delivers these capabilities to all skillsets — making it a go-to product for standardization across a facility. With great power comes great responsibility, so Lucia includes secure multi-layered password protection too.

➤ **AN ARCHITECT'S DREAM.**

With a premium StudioX™ design that leverages dead-front masking technology, Lucia's ultra-bright OLED fades discreetly into its surroundings when on standby. And, with its Decora® variant, Lucia can be installed into wall-plates that perfectly match the rest of your space — seamlessly stylish.





# XTOUCH

Exceptional control.



## LET YOUR TRUE COLORS SHINE.



More than 16 million colors with true-to-life ColorMatch™ technology, plus crisp whites and deep blacks.



Ultra-wide viewing angles and exceptional clarity with in-plane switching.



450nits of sustained brightness to cut through direct sunlight and commercial lighting.

## GREAT COLLABORATION SPACES DON'T NEED DISTRACTIONS.



With an edge-to-edge glass display, XTOUCH isn't just beautiful and immersive — it also blends into any environment. From the executive boardroom to a suite of classrooms, its patented low-profile design fits perfectly into dual-gang backboxes. And, pair with the premium XT80-TTS stand by StudioX™ for table-top applications.



### One cable does it all.

Deploy over standard network infrastructure without proprietary cables or connectors. A single CatX connects power and data with IEEE 802.3af PoE.



### Just tap.

Empower room users with a UCI they can command. And, do it the smart way — with drag-and-drop simplicity from Xilica Designer. Pre-built modules for Technology Vendor Partners, industry-standard Lua scripting to code your own, and slick templates that let you add custom logos, brand identities and icons. It's all possible with just a few taps.



### Fewer boxes, greater flexibility.

Remove the complexity of external room control devices and harness the integrated control engine within every XTOUCH display. A quad-core processor delivers lightning fast command over audio, lighting, video, HVAC and more. Without the extra control processor. Fewer black boxes, greater flexibility — all for less.



### Connect securely.

Install worry-free in high-traffic areas. Pair XTOUCH 80 with the XT80-TTS table-top stand and benefit from integrated security features for corporate and education, including locking attachments for loss prevention and intelligent cable access at both the rear and underside. Mount on lecterns, credenzas and conference tables with ease.

# SONIA

Hear clearly, wherever you are.

CATX SPEAKERS FOR CONFERENCING, COLLABORATION



## BRING EVERYONE INTO THE DISCUSSION.



### THE PROBLEM

In larger collaboration spaces such as conference rooms and classrooms, soundbars and speakers near the display won't adequately cover the space. Room users closer to the display will endure an unpleasant volume level while those at the back may not hear at all.



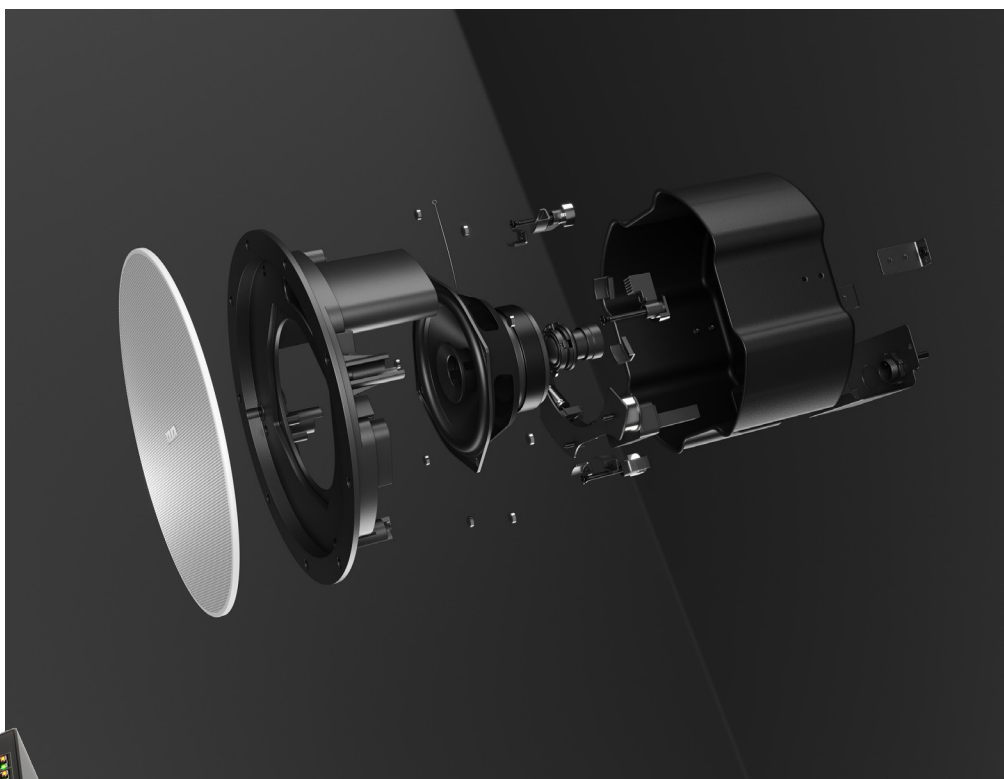
### THE SOLUTION

Distributed speakers, such as the Sonia Series, enable you to locate speakers evenly across the space to cover a smaller area with each device — making overall volume lower, more comfortable, and removing echos and booms. Now, those at the front and back of the room can hear the same — with comfort.



## SONIA GIVES EVERYONE THE ABILITY TO DEPLOY GREAT AUDIO.

Unlike traditional speakers, Sonia is based entirely on CatX cable — enabling quick, easy installation with no messy termination or bulky copper wire. It enables everyone to deploy great audio in their space, without worrying about their setup.



## KEEP YOUR ROOM CLEAR.

Sonia Amp mounts directly onto Sonia C5 for invisible, in-ceiling installation. Plenum rated, the entire configuration eliminates in-room amplifier racks and hefty, expensive copper cable — and, Sonia C5 includes double-stepped, long travel mount ears for blind installation from below the ceiling.

## SIMPLY CONNECTED.

Sonia Amp is designed for the modern collaboration space and includes a built-in network switch, enabling you to power an external ceiling microphone array direct from the device. That's just one CatX drop to the ceiling for your entire AV system.



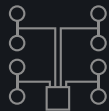


**SONIA C5 –  
EXCEPTIONAL  
AUDIO QUALITY.**

Sonia C5 incorporates a soft, silk-domed tweeter for smooth tonality and a 5.25" low-frequency transducer to give the ideal size-to-sound ratio for modern meeting spaces. Sonia C5's wide, even dispersion pattern enables fewer speakers in large spaces.



**Features of Sonia C5**



Power up to eight Sonia C5 speakers from a single Sonia Amp, linking them in pairs for greater coverage with less cable.



Sonia is optimized for highly-intelligible speech with VoiceMatch™ in each Xilica processor.



StudioX™-designed grille that is magnetically attached without tools, and paintable in any color with removable logo.



**DON'T WORRY ABOUT COMPATIBILITY.**

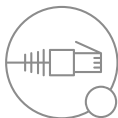
Sonia Amp and Sonia C5 were designed to work together with just a click. And, pre-built templates for Sonia systems are available in Xilica Designer — so room deployment really can be turn-key.

**SONIA AMP –  
CENTRALIZED CONTROL.**

Running like a standard IT appliance, Sonia Amp enables centralized monitoring, management and control without the cost of individually-addressable speakers.

With fault sensing between Sonia C5 speakers and the Sonia Amp, and dedicated VoiceMatch™ settings in each Xilica processor, end-users benefit from the same core functionality as an IP speaker without the expense.

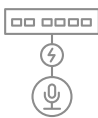
**Features of Sonia Amp**



Single CatX for power and data, with Sonia Amp supporting Dante™ and PoE+.



Plenum rated, enabling invisible installation in drop ceilings and air-handling spaces with mounting directly onto Sonia C5.



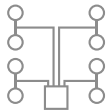
Integrated network switch with PoE, connecting external ceiling microphones with just one cable.



# WHY XILICA?

## CONNECTION SHOULD BE EASY.

Through considerate design and development, we create professional communication and collaboration technology that is simple to choose, simple to deploy, and simple to love.



### Network-native

Leveraging standard network infrastructure for ease of deployment and ongoing management, our products are CatX-based and embrace common IT standards.



### Advanced technology

Our proprietary algorithms improve speech clarity in communication environments and enable your people to do their best work, not worry about the sound.



### Ease of installation

Xilica solutions are designed to be rapidly-deployed, eliminating advanced programming and setup. Handling complexity should be on us, not you.

Join organizations around the world leading with Xilica



## ABOUT XILICA

Xilica® creates collaboration products that help unlock the power of human connection. Built on decades of reimagining how people use technology, Xilica's solutions bridge the distance between individuals, teams, ideas and organisations — unleashing the power of understanding to transform business and society for the better. Through our focus on the enterprise, education and government markets, Xilica and its partners touch the daily lives of people in more than 100 countries.

**DISCOVER MORE AT [XILICA.COM/SALES](https://xilica.com/sales)**

© 2022, Xilica Corporation.

The Xilica visual identity, name and brand-mark are trademarks or registered trademarks of Xilica Corporation. Dante is a registered trademark of Audinate Pty Ltd.

All other marks are trademarks of their respective owners and Xilica disclaims any proprietary interest.

**XILICA®**